



Ephraim Faience Art Pottery

It's more than pottery. It's a lifestyle.



Arts and Crafts

In late nineteenth-century America, the Industrial Revolution was in full swing. Along with factories and assembly lines came sweeping societal changes, including the dehumanization of the worker and the mass production of the trappings of daily life. In the decorative arts, many items were produced that bore no visible signs of an individual human maker. Both the worker and the consumer were minimally involved in the human dimension of the process.

Some craftspeople and social reformers of the day rebelled against mass production and its more negative social effects. They espoused a philosophy in which meaningful, humane work was valued and which advocated a return to making decorative objects by hand. The resulting work exhibited the fine craftsmanship, natural motifs, and individuality of character that became hallmarks of the Arts and Crafts style. This philosophy lives on in today's Arts and Crafts renaissance.

Mission

Our mission is to create the finest Arts and Crafts style pottery available today, in a manner that respects not only historical traditions, but the inherent worth of the people who make and purchase it, as well. As we like to say, It's more than pottery. It's a lifestyle.

I've always wondered what it would be like to have been in on the ground floor of Rookwood, Grueby, Teco...and now I know!

— J.R. Holloway, Ozark, MO

Hidden Treasures



Climbing Tree Frog Vase
9" x 5"
#123 LG



Curious Geckos Vase
7" x 8"
#110 LG



Forest Chalice
12 3/4" x 4 1/2"
#122 DA



Budding Candlestick
4½" x 4"

#971 LG (shown), N, SY, CP, SB, IN

Beautiful Blooms



Snowdrop Vase
7½" x 4½"
#114 DU



Budding Poppy Vase
8¼" x 5"
#124 DU



White Iris Vase
9¾" x 5¼"
#112 LG



Perennial Vase
21" x 12"
#802 LG



Blooming Poppies Vase
8½" x 8½"
#113 LG



Meadow Flower Vase
11" x 4½"
001 SY with white flowers (left);
LG with SY flowers (right);
SB with white flowers

The Warmth of Copper



Copper Eucalyptus Bowl
3" x 7"

#119 LG with copper accents



Copper Dragonfly Vase
5½" x 5"

#120 LG with copper accents



Copper Hubbard Vase
7¾" x 3"

#121 LG with copper accents



The Arrowroot Collection

Rolled Arrowroot Vase (left)
13" x 5½"

#809 MG Marbled matte green

Marsh Arrowroot Vase (center)
8¾" x 6"

#026 MG Marbled matte green

Arrowroot Vase (right)
13" x 4¾"

#806 MG Marbled matte green

History

In 1995, Kevin Hicks was working as a potter for a commercial production pottery. His frustration with the lack of creativity in his job and the demands of mass production echoed the same discontentment experienced by nineteenth-century Arts and Crafts potters. Seeking more satisfying work and an aesthetic he could embrace, Kevin and a co-worker founded Ephraim Faience Pottery in July 1996.

The birth of EFP fulfilled Kevin's longstanding dream to own his own studio. As EFP's reputation for quality Arts and Crafts pottery has spread, the company has been able to create new positions for other talented professionals. Today, Kevin shares the studio with Laura Klein, potter; Jesse Wolf, decorator; John Raymond, studio foreman; Todd Butzin, tile maker; Wendy Krueger, coordinator of daily operations; and Kristin Zanetti, manager.

"Everyone who works here is important," Kristin emphasizes. "What each one of us does every day makes a difference. It is an environment where creativity and hard work are valued."



EFP's body of work and reputation have continued to grow steadily over the years. In 1997, we issued our first "catalog," a brochure showing 12 designs, most of which were reproductions. 1999 was a breakthrough year that saw the introduction of our decorative tile line. The catalog that you hold in your hands is six times larger than our first, and includes both pottery and tile, most of which are created from original designs by our artists. We continue to challenge ourselves to grow artistically while still maintaining the Arts and Crafts feel in our work.

Cabinet Vases

These small vases are perfect additions to a bookcase or cabinet shelf.



Boston Fern Cabinet Vase
5¼" x 3½"
#063 LG (left), SY (right),
CN, CP, SB, IN, SG



Spring Leaf Cabinet Vase
3½" x 3½"
#064 LG (shown),
CN, SY, CP, SB, IN



Iris Star Cabinet Vase
5¾" x 3¾"
#062 LG (shown), SY, SB



Northwoods Pine Cone Cabinet Vase
2¾" x 4½"
#061 LG



Brussels Vase
3½" x 5"
#922 LG (shown),
CN, SY, SB



Three-Handled Cabinet Vase
4" x 4"
#160 DU (shown), DA

Thank goodness for artists who make the sacrifice to give up commercialism and create pieces that are meaningful.
— Jackie Haynes, Deerfield, IL

Studio

Great strides have been made since the early days of experimentation with Arts and Crafts pottery in Kevin's mom's basement. EFP is now housed in a converted barn in rural Deerfield, Wisconsin, and includes an office and a large studio space. We are surrounded by fields, trees, and a marsh, which are home to various types of wildlife, including deer, pheasants, cranes, hawks, and rabbits. The natural beauty of southern Wisconsin is a great source of inspiration, influencing our work in many ways, some direct, others more subtle.

Although we are not able to accommodate visitors at our studio, we have a company store in Deerfield that carries our complete line of pottery, as well as seconds, experimental, and journeyman pieces. Information about our company store, as well as a list of retailers around the country that carry our pottery with links to their web sites, can be found on ephraimpottery.com.

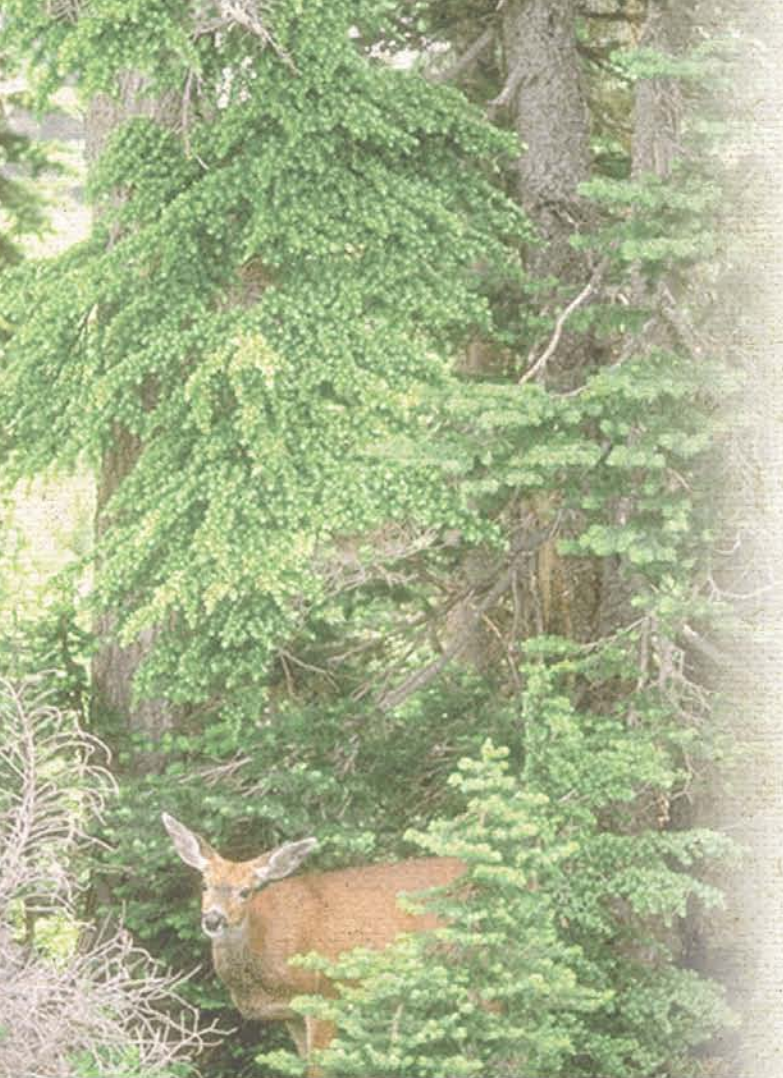
I feel very fortunate. Not only am I surrounded by talented people, but I also enjoy creative freedom in my work. It's the best of both worlds.

—Kevin Hicks,
potter and sculptor



Newsletter

We like to let our customers know what's happening down on the farm, so News From Ephraim comes from Kristin's pen a few times a year. We keep you up to date on new promotions, notify you when pieces are retired and discontinued, and introduce you to our staff. Our calendar of events and information for collectors are also included. Current and back issues of News From Ephraim can also be read on ephraimpottery.com.



Landscapes

We have freshened the look of our Newcomb College-inspired pottery. Our new color, Newcomb Green, is creamier and brighter, with more subtle gradations of tone. Our old Spanish Moss Vase has been enlarged, and is now the Summer Cypress Vase.



Ponderosa Pine Vase

9½" x 4½"

#031 NG Newcomb Green



Summer Cypress Vase

13¼" x 4½"

#128 NG Newcomb Green

Collecting

All EFP pottery and tile is created by hand. Like snowflakes, no two pieces are exactly alike. You will notice slight variations in size, color and decoration from the examples pictured in this catalog. The hand-made nature of our pottery and tile contributes to its individuality and enhances its collectibility.

Each vase and candlestick is a limited edition. No more than 500 first-quality pieces are created of each design. When a piece reaches 500, it is retired. In order to make room in our line for new designs, most vases are retired before they reach 500 pieces. We let our customers know in advance when a piece will be retired so that they have time to order it if they'd like. Retirement announcements are made in our newsletter, News From Ephraim, and on our web site, ephraimpottery.com. An archive of retired pieces can also be found on our web site.

Sometimes, for a variety of reasons, we need to discontinue a piece. Unfortunately, in this situation we are not able to give our customers advance notice. The piece becomes unavailable as of a certain date, and no more can be ordered. A list of discontinued pieces is available on our web site.

Orders

EFP makes all the pottery and tile that you order especially for you. All orders are prioritized by date received. The order confirmation that we mail to you will indicate an approximate delivery date. If you'd like to know the approximate delivery date before you order, please call Wendy at 888-704-POTS or email info@ephraimpottery.com.

What a talented group of artists! Watching a lump of clay being turned into a beautiful piece of pottery is inspirational.

—Wendy Krueger,
coordinator of daily operations



Process

The EFP artists collaborate on the design and creation of each vase, tile, and candlestick. True to the legacy of Arts and Crafts, all of the work is done by hand. The potters use earthenware and stoneware clays from the Midwest to throw and sculpt the forms. The decorators mix the glazes and apply them to the forms. This hands-on process ensures the uniformly high quality of workmanship for which Ephraim Faience Pottery is known.

Each beautiful vase and candlestick has its origins in a humble lump of clay. The potter works the clay on a wheel, "throwing" it into the desired form. The thrown, wet piece is referred to as "green ware." The EFP mark and the signature of the artist are applied to the foot (bottom) of the thrown clay form, which is then left to dry. Drying usually takes from three to ten days, depending on the size of the piece, the clay used, and the climatic conditions in the studio. If leaves, buds, or other sculpted decoration are to be applied, it is done during this drying time.

When the piece is bone dry, it undergoes the bisque firing, after which it is hard and is ready to be decorated. The decorator applies the glazes, and the piece is fired again. Curdled pieces undergo two separate glaze firings. After firing, the foot is ground to remove excess glaze. In most cases, the entire process takes about three to four weeks, if no problems, such as cracking or breaking, occur along the way. The results of this labor-intensive process are the unique and stunning pieces shown in this catalog.

The Simple Life



Anjou Vase

5" x 4 1/2"

#102 CP (left), LG (right),
CN, IN, SY, SB, SG



Sandhill Vase

8 1/4" x 4 1/4"

#101 LG (left), IN (center), SY (right),
CP, CN, SB, SG



Laura at the potter's wheel



Kevin sculpting eucalyptus leaves.



Jesse applies glaze to a vase.



Loading the kiln.

From the Forests...



Native Poplar Vase
3½" x 6¼"
#105 LG (shown),
SY, CN, CP, SB



Sumac Vase
8¼" x 6¾"
#104 LG (shown),
SY, CN, SB, CP



Boston Fern Vase
11" x 5¼"
#813 LG (shown),
CN, SY, CP, SB, IN, SG



Pacific Eucalyptus Vase
11½" x 4½"
#029 LG



Pacific Eucalyptus Bowl
5¾" x 11½"
#126 LG



**Northwoods
Pine Cone Vase (Tall)**
10" x 6¼"
#902 LG



**Northwoods Pine Cone
Vase (Short)**
4½" x 6"
#901 LG



**Valley Oak Vase
(Tall)**
9¾" x 6½"
#028 LG



**Valley Oak Vase
(Short)**
5" x 7"
#027 LG

...and Streams



An interesting thing I discovered in life is to enjoy the work you do. Working with pottery and tile gives me a sense of pride and makes me feel exhilarated. To see a beautiful piece start from a ball of clay and work its way out the door can be a feeling like sending your child off to college — I assume!

—Jesse Wolf, decorator and tile maker



Fish Creek Bowl
3½" x 6¼"
#106 MC



Koi Vase
9" x 7¼"
#108 SY (shown),
LG, SB



Lily Pond Vase
2" x 7"
#107 LG

Marks

In the world of art pottery, makers' marks serve important functions. Makers use them to identify their work, so that their pieces aren't misattributed or misrepresented. Collectors use them as an aid in identifying the maker and the date, as well as to determine the authenticity of the piece.

In January of each year, we introduce new marks that are used for all pottery and tile made during the course of the year. In 2001, we are using two different marks. A larger, rectangular format is used for tile and vases with a wider foot. A smaller, circular mark is used for cabinet vases and other vases



**Foot of a faience vase
made in 2001
by Kevin Hicks**

with a narrower foot. The foot of each vase also bears the signature of the artist.

Here are the marks that are being used in 2001:



Larger Vases & Tile



Smaller Vases

Tick marks outside the round EFP logo differentiate each year's mark. Thinking of our round logo like the face of a clock, the tick marks for this year are at the 12 and 1 positions, representing the year 2001.

A chronology of the marks that we have used on our pottery and tile can be found on ephraimpottery.com.

Woodland Creatures



Rhinoceros Beetle Vase

5" x 7¼"

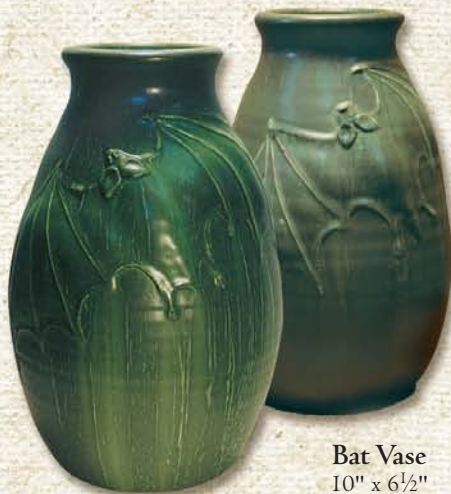
#010 YC (left), BC (right),
FC, CU, MC, ML



Deco Beetle Vase

12½" x 5"

#109 DU (left), DA (right)



Bat Vase

10" x 6½"

#823 LG (left), CN (right), CP, IN



Dragonfly Vase

11½" x 4½"

#817 LG (shown), CN,
SY, CP, SB, IN, SG



Darner Vase

8" x 5"

#818 LG with amber high-
lights (shown),
CN with amber highlights,
SY with white highlights

*I've always been interested
in nature, so I really enjoy be-
ing able to incorporate the
natural world in my work.*

—Laura Klein, potter and sculptor



ephraimpottery.com

EFP launched a new, enriched version of ephraimpottery.com in Spring 2001. This year, for the first time, all of the pieces shown in this catalog can be viewed on line. Logging on is also a great way to keep up with what we're doing. Check our calendar of events, learn what's being retired, and take advantage of special promotions. You can also read our newsletter, News From Ephraim, and email us with questions or comments. Our web site is a resource designed for you, our customers and collectors. We suggest adding ephraimpottery.com to your list of favorite sites, and we hope you'll visit regularly to see what's new and exciting.



Hanging Bat Vase
8½" x 6¼"
#017 CN (left), LG (right),
CP, IN



Damselfly Vase
11" x 4½"
#003 ML (right), LG (left)



Dark Secrets Bowl
5" x 9¾"
#111 CN

Care

As with any other work of art, exposure to water and extremes in temperature is not recommended. Art pottery should be dusted with a dry, soft cloth. If you wish to display live flowers, we suggest using a protective floral liner (a glass or plastic cup works fine) and a drip pan in order to protect the life of your piece and your furniture from water damage.

Although there is no lead in any of our glazes, we do not consider our art pottery to be food safe.

Press Room

EFP's pottery and tile has garnered high praise from the Arts and Crafts and art pottery communities. Our work has appeared in numerous national and regional publications, including American Bungalow, Arts & Crafts Designs for the Home, Architectural Digest, The Baltimore Sun, Country Living, Madison Magazine, North Park News, Old House Interiors, Prairie Style, The San Diego Union Tribune, Stickley Style, Style 1900, and The Wisconsin State Journal.



Climbing Beetle Vase
10½" x 5½"
#118 BC (left), FC (right),
CU, MC, YC, ML

Glazes

EFP's glazes have garnered praise from art pottery collectors and Arts and Crafts lovers alike. The richness, depth, and texture of the glazes we have developed are amazingly similar to glazes used by the old Arts and Crafts potteries at the turn of the last century.

EFP offers different types and colors of glaze. For aesthetic and technical reasons, most pieces are offered in a limited range of colors. Codes reflecting the color choices for each piece accompany the photos in the catalog.

General descriptions of our glazes are included here. Please note that variations within a color do occur. This is due to naturally-occurring fluctuations in the raw materials used to make the glazes, and to a variety of factors in the firing process.

Faience Glazes

EFP's faience glazes are matte crystalline glazes. During firing, gravity pulls these thick glazes down the piece. This running and blending creates marvelous, and sometimes unpredictable, effects. The firing process also brings out crystals, which add depth and richness to the color.



Leaf Green (LG): A deep, pure green, similar to the color of a maple leaf in July



Seaspray Blue (SB): A medium, bright blue with green tones, similar to the color of a tropical ocean



Crystalline Purple (CP): A very dark purple with red and brown tones, similar to the color of a ripe eggplant



Chestnut Green (CN): A dark grayish-green with brown tones, similar to the color of a ripe green olive



Spring Green (SG): A medium, muted green with blue tones, similar to the color of a blade of grass on a frosty April morning; similar in color to the glaze used on Teco pottery



Indigo (IN): A deep, cool blue with charcoal-gray crystals; similar to the color of a clear sky an hour after sunset



Satin Yellow (SY): A deep, golden yellow, similar to the color of yellow mustard



One of the most gratifying experiences in life is to be able to create objects of great aesthetic value.

—John Raymond,
studio foreman



We've enjoyed our pieces so much and have decided to paint our living room based on your lovely green glazes.

— Susan Cook, Madison, WI

Curdle Glazes

EFP's curdle glazes take their name from their texture, which is similar to that of curdled milk. Curdled pieces undergo two glaze firings: one for the faience underglaze and one for the curdle glaze. The texture adds a three-dimensional quality, and the overall effect is organic and primal.



Curdled Leaf Green (CU): Green curdle over green faience, resulting in a very dark green with graphite-gray tones



Fall Curdle (FC): Yellow curdle over green faience, resulting in a rich yellow-green with a strong three-dimensional quality



Curdled Satin Yellow (YC): Yellow curdle over yellow faience, resulting in a medium yellow with deep reddish orange undertones



Midnight Curdle (MC): Blue curdle over green faience, resulting in a deep blue green that evokes the midnight sky and the ocean depths



Blue Curdle (BC): Blue curdle over yellow faience, resulting in a dark blue with yellow and purple undertones showing through in spots; the most color variety of any of the curdled glazes



Fall Maple Leaf (ML): A lighter-textured version of Curdled Satin Yellow, this is the only curdled glaze with a smooth texture. The deep golden yellow and red-orange blend to create a marbled effect, like the fall color of a maple leaf

Texture



Osage Vase
5" x 6"
#115 BC (left), FC (right),
CU, MC, YC, ML



Bud Vase
9" x 4½"
#803C CU, FC, YC (shown)
#803 SY, LG, CN



Budding Gourd Vase
3" x 5¼"
#117 LG, CN, SY
#117C YC (right), FC (left), CU



Curdled Prairie Flower Vase
5" x 5"
#816 FC (left), YC (right), CU



Begonia Vase
5½" x 5¼"
#012 FC (shown),
CU, BC, YC, ML, MC



*I enjoy being part of a group
that's enthusiastic about what
they do. I feel that what I
contribute is respected. This
creates a very open and friendly
environment, making Ephraim
Pottery a pleasant place to work.*

—Todd Butzin,
tile maker



Seven-Handled Vase
11¾" x 10"
#962 CU (shown),
FC, BC, YC, MC



Pond Flower Vase
11" x 8¼"
#964 CU (shown), FC, YC



Harvest Squash Vase
8¾" x 8¼"
#116 YC (shown), BC, CU, FC,
MC, ML



Tile

Our earthenware tiles are made one-by-one on a press. Each tile is decorated by hand, ensuring that no two tiles are exactly alike. We also offers hand-made field (plain) tiles in glazes and sizes to match our decorative tiles. These are custom-made for larger projects such as fireplace surrounds.

Please contact us for pricing and ordering information.

Note: Our tiles are porous. They are not suitable for very wet environments, such as shower stalls or tub surrounds.



Bud Tile
4" x 4"
#981



Pine Cone Tile
4" x 4"
#080



Ginkgo Tile
4" x 4"
#980
LG (shown), SB, SY



Tulip Tile
4" x 4"
#984

Oak Frame for 4" x 4" Tile (not shown)
9³/₄" x 9³/₄"
#TF4



Reverie Tile
6" x 6"
#192

Oak Frame for 6" x 6" Tile
10¹/₂" x 10¹/₂"
#TF6



Owl Tile
4" x 8"
#193
IN (shown), LG, CP

Oak Frame for 4" x 8" Tile
7¹/₂" w x 11¹/₂" h
#TF8





Northwoods Pine Cone Tile
6" x 6"
#990

Dragonfly Tile
6" x 6"
#991

Nostalgia Tile
6" x 6"
#993

Triptych Oak Frame for 6" x 6" Tiles
23½" w x 10½" h
#TR6

Today I received my first Ephraim purchase, two ginkgo leaf tiles. The tiles have surpassed my expectations. While photographs show the form and design of a piece, the texture and depth of the colors were a revelation. I think your work is sensational and hope to be able to order other items in the future.

— B. White, Boston, MA

Elk Creek Tile
6" x 6"
#095



Water Lily Tile
6" x 6"
#190



Spanish Moss Tile
4" w x 8" h
#096



Lady's Slipper Tile
6" x 6"
#191



Walnut Hollow Tile
6" x 6"
#094



Prairie School



Bungalow Vase

5 $\frac{3}{4}$ " x 5 $\frac{3}{4}$ "

#914 LG (shown),
CN, SY, CP, SB, IN



Oak Park Vase

5 $\frac{3}{4}$ " x 5 $\frac{3}{4}$ "

#014 SG (shown), LG,
SY, CN, CP, SB, IN



Great Plains Vase

5 $\frac{1}{2}$ " x 4 $\frac{1}{2}$ "

#103 LG (left), SY (center), IN (right), CN,
CP, SB, SG



Monona Vase

4" x 5"

#127 DU (left), DA (right)



Large Four-Handled Vase

12 $\frac{1}{2}$ " x 4 $\frac{1}{2}$ "

#807 SG (shown),
LG, CN, SY, CP, SB, IN



Bungalow Umbrella Stand

20" x 10 $\frac{3}{4}$ "

#125 LG (shown), CN

I recently ordered and received the Four-Handled Vase in the Leaf Green glaze. It arrived today and I am absolutely thrilled with it! The glaze is truly fantastic. I will be ordering more of your pottery.

— Brian Price, Macon, GA



Bungalow Rose Vase

7 $\frac{1}{2}$ " x 4"

#004 SB (left), SY (center),
LG (right),
CN, CP, IN