



Ephraim Faience Art Pottery



It's more than pottery. It's a lifestyle.

Catalog #12
2007-2008

THE CLASSICS

Some things never go out of style — the graceful edge of a ginkgo leaf, the fiddlehead's timeless spiral, the play of light and shadow under a tree, the welcoming columns of a bungalow's porch — all are hard-wired into our memories. The classics comfort us and make us feel at home.



PK

LG

CN

Pasadena

6½" x 5½"

#525 LG, CN, SY,
CP, IN, PK, SB

LG

CN

PK

Meadowood

9¼" x 4¾"

#624F LG, SY, CN,
CP, SB, IN, PK



PK

CN



CP

Star Fern Medium

8" x 4¾"

#515F LG, SY, CN,
CP, SB, IN, PK



SY

LG

CN

Morris

8¾" x 5¼"

#519 PK, SY, CN,
LG, CP, SB, IN

See additional colors elsewhere in catalog

MISTS OF MEMORY

Somewhere, shrouded in the mists of memory, a simpler time still exists. As the setting sun casts a long golden glow over the waving fields of wheat, a farmer rocks on his front porch. Leaning back with eyes closed, his weather-worn face soaks up the last of day's warmth. He put in a good, long, honest day's work, and he'll be back at it at sun-up tomorrow. But for now, there is only the fading sunshine, the gentle rush of wind through the wheat and the creak of the old hickory chair.

Indian Paintbrush

8¼" x 5¼"

#A18 Color as shown



Heartland

8" x 5½"

#A20 Color as shown



Beautiful Butterflies

8¼" x 4"

#A19 Color as shown



Prairie Sunset

6" x 4¼"

#517 Color as shown





Seed Pod

4 $\frac{3}{4}$ " x 4 $\frac{3}{4}$ "

#625 SK



Evening Primrose

3 $\frac{1}{2}$ " x 3 $\frac{1}{2}$ "

#626 SK



Teardrop

8 $\frac{3}{4}$ " x 4"

#A01 SK



Blossom

5 $\frac{1}{4}$ " x 4 $\frac{3}{4}$ "

#627" SK



Star Flower

5 $\frac{1}{4}$ " x 6 $\frac{3}{4}$ "

#501 SK

BLUE SKIES ☺

Lying in the fresh green grass, feeling the warmth of the sun, watching the clouds morph and shift into shapes you've never seen before... what better way to spend an afternoon?



Star Fern Medium

8" x 4³/₄"
#515 SK



Pear Gourd

6" x 4"
#628 SK



Homestead

4³/₄" x 4³/₄"
#A03 SK



Woodland Spring

5¹/₄" x 4³/₄"
#A02 SK

About Ephraim Faience Pottery

The artists at Ephraim Faience Pottery create art pottery in the Arts and Crafts style. Our original designs and glazes are inspired by the natural beauty of our rural Wisconsin surroundings. Each piece of our pottery is the result of a collaborative effort on the part of the 11 talented people who work at our studio. Our dedication to our work and to each other is reflected in the pottery we create. For you to share in this with us fuels our passion and enables an American ideal, a lifestyle, a way. We invite you to experience our pottery. Discover why we say, *It's more than pottery. It's a lifestyle.*



Star Fern Medium
8" x 4¾"
#515 AG



Craftsman Lantern
Two pieces with removable lid; designed to hold a tea light candle.

7" x 7"
#A26 AG



Star Fern Large
10½" x 5½"
#516 AG



Pasadena Corbel
9" x 4½"
#A31 AG



Woodland Spring
5¼" x 4¾"
#A02 AG

REFLECTIONS OF THE PAST

Art, like life, doesn't exist in a vacuum. Not only are artists influenced and shaped by the world around them, they are also products to some degree of the artists who came before them. Our Antique Green glaze is our interpretation of the old Grueby Faience Company's famous green. It is part of our aesthetic heritage and our homage to what could arguably be considered the greatest American art pottery of all time.



Bear in the Orchard

7" x 5½"
#A24 AG



Under The Eaves (bats)

7½" x 5¼"
#A27 AG



**Wispy Wheat
Cabinet Vase**

4½" x 4½"
#460 AG



Mountain Wildflower

7¼" x 4"
#421 AG



Fluted Bud

9½" x 6"
#527 AG



Ginkgo Lantern
Two pieces with removable
lid; designed to hold a tea
light candle.
7" x 7"
#A25 AG



Summer Oak
7" x 4"
#A28 AG



Cathedral Forest
10" x 3½"
#A30 AG



Lone Pine Gorge
11½" x 6"
#A29 AG



Morris
8¾" x 5¼"
#519C AG

WATERCRESS

There is comfort to be taken in the familiar lines, colors and textures with which we surround ourselves. Sometimes we don't want new things to look new. We want them to look old and crusty, to remind us that we are but the latest hash mark on the timeline of history. Shiny things take on a patina with the passage of time, and some would even go so far as to say that they look better that way.



Homestead

4¾" x 4¾"

#A03 WA



Seed Pod

4¾" x 4¾"

#625 WA



Evening Primrose

3½" x 3½"

#626 WA



Meadowood

9¼" x 4¾"

#624 WA



Teardrop

8¾" x 4"

#A01 WA



Blossom

5¼" x 4¾"

#627 WA

See additional colors elsewhere in catalog

A FEAST OF FRUITS

Nourishing soil, spring showers and warm sun — springtime ingredients slowly ripen into a sumptuous summer feast of succulent fruits and juicy berries.



Heirloom Blackberry Short
5¾" x 4¼"
#522 Color as shown



Wild Raspberries
8½" x 4¼"
#618 Color as shown



Flowering Plum
6½" x 7"
#619 Color as shown



Red Mulberry
7" x 6½"
#A23 Color as shown



Cherry Orchard
9¾" x 5"
#611 Color as shown



Cherry Orchard Short
6¾" x 5"
#A22 Color as shown

SUMMER BREEZES ☼

Linens flapping on the clothesline, the sweetly spicy fragrance of daisies, fresh-squeezed lemonade, the sway of the weeping willow...memories blown in on summer breezes.



☼ See additional colors elsewhere in catalog



Seed Pod
4 $\frac{3}{4}$ " x 4 $\frac{3}{4}$ "
#625 PG

Evening Primrose
3 $\frac{1}{2}$ " x 3 $\frac{1}{2}$ "
#626 PG



Blossom
5 $\frac{1}{4}$ " x 4 $\frac{3}{4}$ "
#627 PG

Star Fern – Medium
8" x 4 $\frac{3}{4}$ "
#515 PG



Wild Morning Glory
9 $\frac{1}{4}$ " x 4"
#409 PG

ON THE WINDSWEPT PRAIRIE



The gifts of the prairie are hidden, disguised under a grassy landscape so familiar that it often goes unnoticed. With time and attention, this land slowly, quietly works its way into the soul, bringing with it feelings of strength, serenity and gratitude — a sense of place.



Teardrop
8 $\frac{3}{4}$ " x 4"
#A01 PG



Homestead
4 $\frac{3}{4}$ " x 4 $\frac{3}{4}$ "
#A03 PG

Star Flower
5 $\frac{1}{4}$ " x 6 $\frac{3}{4}$ "
#501 PG



Woodland Spring
5 $\frac{1}{4}$ " x 4 $\frac{3}{4}$ "
#A02 PG



The Studio

The Ephraim Faience Pottery studio is located in a rural area just east of Madison, Wisconsin. We are surrounded by prairies, marshes, and woods. The inspiration of the natural world is right outside our door. We find it in the sturdy old oaks that line the roadsides, in the wildflowers hidden amongst the ferns, and in the changing colors of the sky and the marsh.

Nature becomes part of us. We take it in, reinterpret it using the Arts and Crafts aesthetic, and express it through a natural medium — clay. You become part of this process when you take our work into your home. It is our privilege to be able to share this with you through our pottery.



GR

MM

**Cottage Garden
Cabinet Vase**

3¾" x 5"

#623 GR, MM



Pussy Willow

10" x 4½"

#505 Color as shown



Breath of Spring

7¼" x 7½"

#A10 Color as shown

OUTSIDE THE GARDEN GATE



Forsythia
10¼" x 5¼"
#A08 Color as shown



Shady Shoreline
5" x 6¼"
#A09 Color as shown



LG



SB

Apple Blossom
6" x 5"
#510 LG, SB



Colleagues Collaborators Friends

Back row:

Kevin Hicks, potter and president; Angela Taddei, glazer; Marilyn Reichel, sales and customer service manager; Paul McVicker, potter and glazer

Middle row:

Ken Nekola, potter; Mary Pratt, potter; John Raymond, glazer and studio foreman; Laura Klein, potter; Kristin Zanetti, office and marketing manager

Front row:

Becky Hansen, glazer;
Eric Anderson, glazer



LG

PK

Mission Oak

5¾" x 4½"

#503 PK, LG



Artichoke

3½" x 4½"

#622 Color as shown



Squash Blossom

8½" x 5"

#502 Color as shown

Ephraim Faience pottery is thrown, sculpted, and glazed by hand. The hand-made nature of our pottery contributes to its individuality and enhances its collectibility. Each vessel bears the impressed mark of our studio and the signature of the principal artist. No more than 500 first-quality pieces of each design are created.

You can learn more about how we make our pottery on our web site, www.ephraimpottery.com.



HARVEST TIME


As the temperatures drop, the colors in our world begin to change. The deep greens of summer give way to flaming scarlets, rich golds and homey russets. At the farmers' market, piles of squash, potatoes and onions replace tomatoes, green beans and corn. The land yields the last crops of the season and prepares to settle in for winter.



PG



SU

Pear Gourd
6" x 4"
#628 PG, SU 




Garlic
3½" x 4"
#615 Color as shown



Wild Ginger
3½" x 6½"
#419 PK

Pumpkin Patch
1¼" x 6¾"
#524 Color as shown

 See additional colors elsewhere in catalog



Chicory
9" x 4¼"
#A16 Color as shown



Delightful Daisies
2¾" x 3½"
#A11 Color as shown



Dandelion
7" x 3¼"
#A21 Color as shown



Snowberry
5½" x 6½"
#641 Color as shown



San Juan Island Thistle
4½" x 4¾"
#A12 Color as shown

Highland Thistle
15¼" x 5"
#A13 Color as shown



ALONG THE ROADSIDE

Seen from the highway they're a colorful blur, but slow down a bit and they begin to take shape: daisies, clover, dandelions, chicory, thistles, Queen Anne's Lace. The bright white and yellow play off the cool blue and purple, dainty petals mixing with tough stalks and prickly spikes. Some call them weeds, but we prefer to think of them as wildflowers. After all, how could something so resilient and beautiful be called a weed?



Bittersweet Pitcher

6 $\frac{3}{4}$ " x 6 $\frac{3}{4}$ "

#A15 AU, MO

AU

MO



Queen Anne's Lace

5 $\frac{1}{4}$ " x 10 $\frac{1}{2}$ "

#640 Color as shown



Clover


5" x 3 $\frac{1}{4}$ "

#A14 Color as shown

**Dragonfly
Cabinet Vase**

3" x 3 $\frac{1}{2}$ "

#A17 SB 

 See additional colors
elsewhere in catalog



Koi Pond

9¾" x 8½"

#A32 Midday (yellow),
Twilight (blue)



Seahorse

11¼" x 4½"

#621 Color as shown



Turtle Vase

7" x 8¾"

#325 Color as shown



Alligator

3½" x 7½"

#A34 Color as shown

THE WONDERS OF NATURE

The wonders of nature are all around us—we just need to step away from our computer screens and look outside. From the gossamer wings of a dragonfly to the iridescent feathers of a swallow, the creatures that inhabit our world are remarkable in their beauty and diversity. We may not all be able to travel to Alaska to see a grizzly fishing for salmon or go scuba diving and see starfish and octopus, but we can appreciate the miracles that happen in our backyards and in our neighborhoods each and every day.




Moondance (Bats)
2" x 6"
#412 Color as shown



Dancing Dragonflies
6" x 5"
#530 Color as shown



Dragonfly Cabinet Vase
3" x 3½"
#A17 PK 



Climbing Black Bear
11½" x 4¼"
#406 Color as shown



Mountain Grizzly
7¼" x 8"
#A33 Color as shown



EFP's glazes are admired for their richness, depth and texture. Our artists have developed matte crystalline glazes that are amazingly similar to the glazes used by the old Arts and Crafts potteries. During firing, the thick glazes become molten, and the force of gravity pulls them down the piece. This running and blending creates marvelous, and sometimes unpredictable, effects. The firing process also brings out crystals, which add depth and richness to color.

Each of EFP's glazes is identified by a 2-letter code. Color chips and general descriptions for each glaze choice appear here. For aesthetic and technical reasons, most pieces are offered in either a single color combination or in a limited range of colors. Please be aware that variations within a color do occur. This is due to naturally occurring fluctuations in the raw materials used to make the glazes, and to a variety of factors in the firing process.

Please note that our pottery is NOT water-tight or food-safe. It is designed for decorative use only. We do not recommend putting water directly into our vases. If you wish to display live flowers, we suggest using a glass or plastic cup or a floral liner and a drip pan. This will help to protect your investment in your piece and will also protect your furniture from water damage.

The Ephraim Faience Pottery studio occupies a converted barn which is nestled in the rolling hills of south-central Wisconsin. The natural beauty that surrounds us is a great source of inspiration. The colors of our glazes reflect the colors of the sky and land as they change with the seasons – deep oranges and warm golds in the fall, icy indigo and purple in the winter, and rich green and blue in the spring and summer months.



Antique Green (AG): A textured glaze that is our interpretation of the famous "Grueby green." A range of the textures possible with this glaze are shown here.



Watercress (WA): A variation of our Antique Green glaze. A special process creates a rich patina that recalls the look of old metal.



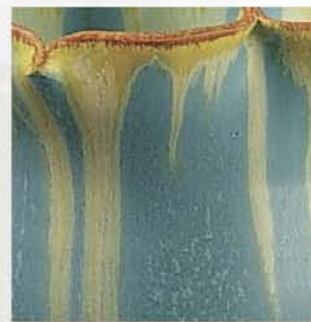
Indigo (IN): A deep, cool blue with charcoal-gray crystals; similar to the color of a clear sky an hour after sunset



Aurora (AU): A dramatic combination of blues and greens, creating a streaking effect reminiscent of the aurora borealis



Morning Mist (MM): A combination of purple with white and blue accents



Sky (SK): A beautiful light blue with soft yellow and gold accents



Chestnut Green (CN): A dark grayish-green with brown tones; similar to the color of a ripe green olive



Leaf Green (LG): A deep, pure green; similar to the color of a maple leaf in July



Seaspray Blue (SB): A medium, bright blue with green tones; similar to the color of a tropical ocean



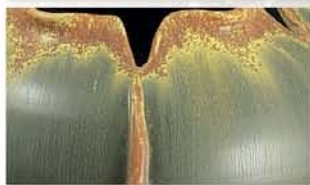
Crystalline Purple (CP): A very dark purple with red and brown tones; similar to the color of a ripe eggplant



Pumpkin (PK): a rich burnt orange with reddish undertones and mustard-yellow highlights; similar to the color of a pumpkin pie



Satin Yellow (SY): A deep, golden yellow; similar to the color of yellow mustard



Prairie Grass (PG): A harmonious blending of glazes containing brown, rust, and yellow crystals, flowing into a quiet grayish-green



Goldenrod (GR): A combination of dark to medium sagey greens accented by yellow tones ranging from orange to light yellow



Willow (WI): A soft blending of crystalline green and yellow



Sunlight (SU): A subtle blending of our Satin Yellow and a special crystalline sunlight yellow resulting in an attractive monochromatic streaking effect



Moss (MO): A subtle blending of crystalline greens resulting in an attractive monochromatic streaking effect



EXOTICS

Although the flowers in this collection are not native to our area, several of our artists have been inspired by photos sent to them by some of our collectors who are also interested in orchids. Our glazers enjoyed experimenting with new color palettes and glaze effects, and we hope you'll like these lovely new vases as much as we do.

Maiden's Tears

10¾" x 5"

#A06 Color as shown



Moonlit Orchid

10" x 4½"

#A05 Color as shown



Rainforest Jewel

3" x 4½"

#A04 Color as shown



The flower shown on the Maiden's Tears Vase comes from a South American tree called the *palo borracho*. A legend about the tree from an ancient Argentinean forest tribe tells of a beautiful young maiden and her true love, a brave warrior. The colors of the tree's flowers represent the maiden's tears and the warrior's blood. Read this beautiful story in its entirety at www.ephraimpottery.com/exotics.htm.