



Ephraim Faience Art Pottery





FLIGHTS OF FANCY



Dancing Dragonflies
6" x 5"
#530 \$198.00



Silk Moth
5¼" x 7"
#B01 \$218.00



Shady Shoreline
5" x 6¼"
#A09 \$188.00



SB



PK

Dragonfly Cabinet Vase
3" x 3½"
#A17 \$108.00



Beauty and the Bats
9¼" x 4¾"
#B15 \$228.00



Beautiful Butterflies
8¼" x 4"
#A19 \$208.00

Potter and sculptor Mary Pratt designed this box to commemorate her fifth anniversary with Ephraim Faience Pottery. John Raymond contributed the glaze design. The Damselfly Box was born out of Mary's fascination and appreciation for insects along with her passion for creating lidded jars and boxes. She has explored lidded objects in her work for the past 10 years and was excited to be able to integrate this interest into her work at Ephraim.



Mary calls her Ephraim colleagues "an amazing group of skilled artisans. Having this rare opportunity to work collaboratively allows me to continue to strengthen and expand my own skills and ideas," she affirms. She notes that Ephraim's high standards continue to challenge her in her daily work, adding, "Over the next five years I plan to continue to expand and sharpen my sculpting and throwing skills while remaining open to new ideas based on historically sound motifs."

While we would like to invite you to join us in congratulating Mary on five years of creative accomplishments at Ephraim, she would like to thank you. "Without the continued support of our devoted collectors, I would not be able to continue to pursue my passion," she gratefully observes. "Being able to provide a stable home for my children by creating meaningful, high-quality objects is a rarity in our society, and I am thankful for the opportunity to make my life doing this."

Ordering deadline for the Fifth Anniversary Damselfly Box is June 30, 2010.

Fifth Anniversary Collection



Damselfly Box

4½" x 4"

#C40 \$158.00



All Fifth Anniversary pieces include this special stamp on the bottom.



A rush of wings breaks the eerie stillness of the forest at night. Barely visible against the night sky, a bat swoops low to catch an insect and then glides up to its resting place in a tree.

Night Flight

5½" x 7"

#C16 \$228.00



To sleep, perchance to dream...

In the late 1800s, the work of Sigmund Freud brought dream analysis to the public consciousness. Freud's theories played a role in the symbolism utilized by Art Nouveau, in which both bats and poppies were used to symbolize the altered state of consciousness brought on by sleep.

Dream Time

4¼" x 6"

#C17 Specify orange or purple flowers \$208.00

With its seemingly magical transformation from caterpillar to cocoon to graceful winged insect, the butterfly has long been symbol of positive change. As the beautiful butterfly emerges from its cocoon, a hopeful new beginning takes flight. The butterflies on this piece rise on gossamer wings to a hopeful new day.



Hope Rises

8½" x 4½"

#C21 \$208.00

Story card available with purchase.



In the evening, as dusk begins to settle, the swallows come out. Darting and swooping, they flit in and out of the darkness in pursuit of insects for their evening meal. This piece attempts to capture the moment in which the swallow emerges from the indigo twilight, wings flashing.

Evening Swallow

8½" x 5¼"

#C15 \$248.00

**Moonlit Orchid**

10" x 4½"

#A05 \$238.00



The flower shown on the Maiden's Tears Vase comes from a South American tree called the *palo borracho*. A legend about the tree from an ancient Argentinean forest tribe tells of a beautiful young maiden and her true love, a brave warrior. The colors of the tree's flowers represent the maiden's tears and the warrior's blood. Read this beautiful story in its entirety at www.ephraimpottery.com/palo.htm.

Maiden's Tears

10¾" x 5"

#A06 \$278.00

Story card available with purchase.

**Spider Orchid**

13½" x 5¼"

#B08 \$278.00

In the Victorian language of flowers, orchids were often used to symbolize rare beauty. This piece, designed by Laura Klein with glaze design by Eric Anderson, truly captures the beauty as well as the rare and precious nature of the orchid. Eric's outstanding glazing on this piece, as well as his affection for orchids, led him to select the Rare Beauty as his Fifth Anniversary piece. Eric hopes that others will enjoy this piece as much as he enjoys using this special combination of glazes on such a beautiful flower.



Working with a group of people who are so devoted to clay, says Eric, "is a great way to go through life. With people coming from so many different backgrounds, there's a lot of give and take of ideas. I think the energy and craftsmanship are visible in each piece."

What does Eric see for himself for the next five years? "I envision that the company I keep will push my efforts into more thinking 'outside the box' and will encourage me to further explore my career in clay."

The Rare Beauty is an excellent example of Eric's achievements in his first five years at Ephraim. Please join us in wishing Eric many more years of creativity and success.

Ordering deadline for the Fifth Anniversary Rare Beauty Vase is June 30, 2010.

Fifth Anniversary Collection



Rare Beauty
10" x 4¼"
#C09 \$268.00



All Fifth Anniversary pieces include this special stamp on the bottom.



In the flower symbolism first created during the Victorian era, pink orchids symbolized pure affection. The delicate pink tree orchids on this piece are juxtaposed with the quiet strength of the vessel, resulting in a piece that exudes a graceful confidence.

Pure Affection
12½" x 6"
#C10 \$338.00

Story card available with purchase.



The Vanilla Orchid is the source of the real vanilla pods that are used in baking and the perfume industry. Each vanilla orchid bloom lasts only one day and must be pollinated or it will be shed, never to open again. After pollination, it takes the blossom 9 months to mature into a dried vanilla pod. The Vanilla Orchid was first cultivated in Mexico by the ancient Totonaco people. Legend says that the blood of two fallen lovers marked the spot where the first vanilla orchid grew and that its scent is the aroma of true love and beauty.

Vanilla Orchid
6½" x 4¾"
#C08 \$198.00

Story card available with purchase.



TREES AND LEAVES



Cathedral Forest (4-sided)
10" x 3½"
#A30 \$248.00



Oak Grove Wall Pocket
8" x 3¼"
#B14 \$198.00



Ginkgo Candle Holder
1¾" x 7"
#B23 \$98.00



Ginkgo Cabinet Vase
3" x 4"
#B30 \$88.00



Ginkgo Lantern
Two pieces with removable lid;
designed to hold a tea light candle.
7" x 7"
#A25 \$248.00



The ginkgo's vitality and tenacity are legendary. When the atom bomb was dropped on Hiroshima in 1945, it destroyed nearly every living thing in the area. However, some plants, among them four ginkgo trees, survived. Although the trunks of these *hibaku* trees were charred, they survived without major deformations and are still alive today. For this reason, the ginkgo tree is sometimes called the "bearer of hope."

Tree of Hope
4¼" x 6¾"
#B26 \$208.00

Story card available with purchase.



No tree conveys a sense of strength and resilience like the proverbial mighty oak. The tiny acorn contains everything necessary to grow into a strong, tall tree that is able to withstand the ravages of weather and time. This piece reminds us that strength and resilience, while they may be manifested on the outside, originate in that essential kernel within.

Stalwart Oak
12" x 5¾"
#C13 \$298.00

Story card available with purchase.

The form of this piece was inspired by art glass vases with Grecian pedestal bases. Newly leafed-out trees accentuate the sinuous form.

Springtime Forest
8½" x 3¼"
#C23 \$188.00



With their distinctive leaves that turn deep red in the fall, the Japanese Maple is a treasured favorite of gardeners in both Japan and the U.S. A leaf design is gently inscribed on a treelike form and accented with a delicate red wash.

Japanese Maple
8¼" x 4"
#C22 \$188.00

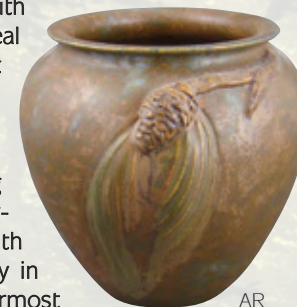


In the far northern reaches of Wisconsin, wild places still exist. Traveling the back roads, it is still possible to come across a rustic old fire lane or logging road lined with tall pines. In this boreal wilderness, the soft rushing of the wind and the fresh, clean scent of pine wash through you, sweeping the dust from the corners of your soul. With its roots buried firmly in the earth and its uppermost branches sweeping the sky, the pine tree harmoniously links the heavens and earth in a universal symbol of peace. The Rustic Pine vase attempts to capture the peaceful reverence of a pine forest in the quietest seasons: autumn and winter.

Rustic Pine
4¾" x 5"

#C11 SO (see back cover), AR \$128.00

Story card available with purchase.



The outstretched limbs of these arching trees invite you to take a leisurely walk under their cool green canopy. Let your imagination lead you down this shady lane — what will you find?

Shady Lane
6½" x 3¾"
#C29 \$158.00





NATIVE FLORA



Spring's Herald

4¾" x 4¾"

#B27 \$208.00



Wood Violet

3¾" x 6½"

#B09 \$198.00



Snowberry

5½" x 6½"

#641 \$238.00



Breath of Spring

7¼" x 7½"

#A10 \$268.00



Marsh Cattail

7" x 4¼"

#B32 \$198.00

"Thanks to Ephraim Faience for continuing to make fine pottery in the unequalled American crafting tradition. The global economy can take our jobs, our real estate, and everything else — except for our talent. Talent is something that belongs to an individual and is, by his or her choice, shared with others."

—B.B., Chicago, Illinois, via email



MO

AU

Bittersweet Pitcher

6¾" x 6¾"

#A15 \$298.00



While it doesn't have the prettiest name, the Skunk Cabbage is a fascinating plant. It gets its common name from its cabbage-like appearance and from the pungent oils it produces. A member of the calla family, it is one of the earliest-blooming plants, often appearing in late winter. Through a unique chemical reaction, the Skunk Cabbage produces its own heat, melting the snow around the emerging plant. The plant is thus able to flower long before other plants have even started to grow. It has been said that Nature is the best teacher. If this is so, then the Skunk Cabbage, which has developed its own unique qualities that enable it to thrive in the face of obstacles, provides a valuable lesson for us all.

Skunk Cabbage

7¼" x 5½"

#C07 \$228.00

Story card available with purchase.

The intricacy of the Evergreen Woodfern provided the inspiration for this piece. While it draws its foundation from the fern-themed vases of the past, this design breaks new ground by combining fronds and fiddleheads in an interesting staggered pattern. The mossy green glaze perfectly complements the woody nature of the motif.



Evergreen Woodfern

6" x 5"

#C12 \$188.00

A member of the lily family, Solomon's Seal grows wild throughout most of the eastern and central U.S., including here in Wisconsin. This graceful, arching plant can be found in shady areas from parks and woodlands to suburban backyards.



Solomon's Seal

11" x 4½"

#C06 \$218.00



REFLECTIONS OF THE PAST



**Mission Rose
Cabinet Vase**
5¼" x 3¾"
#B29 \$138.00



Woodland Spring
5¼" x 4¾"
#A02 \$148.00



Cats were worshipped as deities in ancient Egypt, and it has been said that the cat has never forgotten it. The cat goddess Bastet protected both humans and their cats, and together with the cat goddess Sekhmet, represented the balance of nature for the ancient Egyptians. Today, a mother cat is called a queen and is a fierce protector of her kittens. While cats have many distinctive qualities and moods, this piece attempts to capture the inherent regal nature of the cat.

The Queen
5½" x 4¼"
#C20 \$148.00



Celtic Knot
8½" x 4¼"
#B21 \$208.00



**Ring of Roses
Cabinet Vase**
3¾" x 4¾"
#B34 \$118.00



This piece draws stylistically from both the flat, graphic designs of the Saturday Evening Girls and the texture and color of Grueby. A cat perched up high carefully watches something down below...a mouse, perhaps?

Watchful Cat
10" x 3¾"
#C19 \$228.00



One of the first pieces thrown in our new studio, this design fuses the old with the new, the historical Arts and Crafts movement with the revival. As we look to the past for inspiration, we create new work that carries treasured traditions into the future.

Revival
15¼" x 6"
#C26 \$368.00



BC

YC



AG

Truly beautiful objects leave a lasting legacy that sometimes manifests in exciting transformations, as in the case of this three-handled piece that reinterprets a classic Grueby design in a scaled-down fashion.

Legacy
7¾" x 5"
#C28 \$208.00



DS

AG

Timeless Traditions Bowl
(4-sided)
2¼" x 5½"
#B22 \$168.00



With its sensuous form and stylized flower design, one can easily imagine this piece gracing the dressing table of a turn-of-the-century belle.

Vintage Elegance
6¼" x 2½"
#C25 \$128.00



Here, our stylized arched bridge appears on an acorn shape, resulting in the perfect blend of theme, design and form.

Oak Street Bridge
3¾" x 4½"
#C24 \$148.00



AR

YC

AG

This five-sided piece is an essential addition to an Arts and Crafts pottery collection. Offered in a range of earthy colors, there is sure to be one that will fill that empty spot perfectly.

Quintessential
5½" x 5¼"
#C27 \$198.00



WIDE OPEN SPACES



Teardrop
8 $\frac{3}{4}$ " x 4"
#A01 \$138.00



Prairie Clover
6 $\frac{1}{4}$ " x 4 $\frac{3}{4}$ "
#B25 \$198.00



Homestead
4 $\frac{3}{4}$ " x 4 $\frac{3}{4}$ "
#A03 \$98.00



Woodland Spring
5 $\frac{1}{4}$ " x 4 $\frac{3}{4}$ "
#A02 \$148.00



The prairie may be in peril, but its spirit lives on in the American Bison. Brought back from the brink of extinction, this American icon has come to symbolize a vanishing way of life. Thankfully, the prairie survives in protected pockets here and there, and its ancient spirit lives on through the buffalo.

Spirit of the Prairie
3 $\frac{1}{2}$ " x 7 $\frac{1}{4}$ "
#C14 \$268.00

FAREWELL TO THE FARM



Ephraim Pottery recently moved to the little town of Lake Mills, Wisconsin. Prior to the move, the pottery had been located on a farm in a rented barn building. After more than 10 years on the farm, it felt like a home-away-from-home for most of us. The rural setting influenced us in many ways, personally, professionally and aesthetically. Our artists shared the beauty of our surroundings through the colors and motifs used for many of our pieces.

To honor the influence that the farm has had on our lives and work, we have created a small collection called Farewell to the Farm. These pieces were inspired by the plants, animals and colors that were familiar sights on or near the farm and are our way of saying "thank you" and "so long" to the farm and the landlords who were so kind and supportive for those 10+ years.

The Farewell to the Farm series will be offered until June 30th, 2010, and no more than 500 pieces will be made of each design. The pieces in this series will bear an additional mark on the foot designating them as part of the Farewell to the Farm collection. Please join us in honoring the important role that the farm played in our lives and in our work by adding the Farewell to the Farm pieces to your personal collection.



FAREWELL

All Farewell to the Farm series pieces bear this stamp on the bottom.



Bunnies were everywhere on the farm, around the marsh, and on the nearby bike trail. In the spring it was fun to watch the baby cottontails hopping across the driveway. After all, who could imagine a farm without rabbits?

Garden Visitor

6½" x 6½"

#C46 \$248.00



Egrets were frequent visitors to the nearby marsh. The harmonious complexities of this piece reflect the serene surroundings we enjoyed at the farm.

In the Marsh

10" x 5¼"

#C45 \$288.00



Beautiful Black-Eyed Susans were abundant along the roadsides. Our neighbor on the farm had one in her garden that was so tall that the blossoms reached the rooftop!

Black-Eyed Susan

8" x 4½"

#C47 \$188.00



FEAST OF FRUITS



**Heirloom Blackberry
Round**
4" x 6"
#B05 \$228.00



Garland of Berries
3 1/4" x 5"
#B33 \$118.00



**Heirloom Blackberry
Short**
5 3/4" x 4 1/4"
#522 \$198.00



Tall Bing Cherry
9 1/2" x 4 1/4"
#B04 \$218.00



Wild Raspberries
8 1/2" x 4 1/4"
#618 \$248.00



Cherry Orchard
9 3/4" x 5"
#611 \$248.00



Cherry Orchard Short
6 3/4" x 5"
#A22 \$198.00



There's nothing tastier than freshly picked strawberries on a fine day in June. Here in the Midwest, strawberries are among the first fruits of summer and are celebrated in many small towns with an annual festival that showcases the fruit at its tastiest in shortcake, sundaes and pies.

Summer's Delight
7 1/4" x 7 1/4"
#C05 \$278.00



The pastures and roadsides in our area are filled with tender red clover. The pretty, sweet-smelling flowers are favorites of children, who pick them by the handfuls for their mothers. No summer kitchen is complete without a clover bouquet in a jelly jar sitting on the windowsill.

Country Bouquet

7¼" x 8½"

#C01 \$288.00

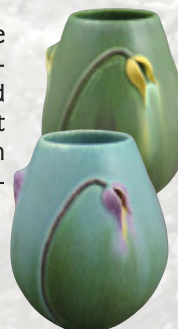


Walking along the edge of the woods, you may see little flowers like these tucked under and amongst the ferns. These sweet little lilies are captured here in three seasons: spring (blue), summer (green) and fall (yellow).

Nodding Lily

4½" x 3¾"

#C03 \$108.00



As autumn begins, the spent blooms of summer add interesting visual touches to the garden. One can almost hear these dried poppy pods rattle as they sway in the cool autumn wind.

Poppy Pods

7" x 4¾"

#C04 \$198.00



Morning glories, their tendrils spiraling along the fence, turn their faces to greet the morning sun. This piece captures the beauty of these enchanting blooms on a cool summer morning.

Glorious Morning

7¼" x 6½"

#C02 \$258.00



Forsythia

10¼" x 5¼"

#A08 \$238.00



Wisteria

14" x 5"

#B18 \$288.00

WHO WE ARE

Ephraim Pottery is a small, independently run business whose employees are still making things — really beautiful things — by hand in America. The artists in the Ephraim Faience Pottery studio create art pottery in the Arts and Crafts style. Our original designs and glazes are inspired by the natural beauty of our rural Wisconsin surroundings.

In 1995, Kevin Hicks was working as a potter for a commercial production pottery. His frustration with the lack of creativity in his job and the demands of mass production echoed the same discontentment experienced by the nineteenth-century Arts and Crafts potters. Seeking more satisfying work and an aesthetic he could embrace, Kevin and two partners founded Ephraim Faience Pottery in July 1996.

The birth of EFP fulfilled Kevin's longstanding dream to own his own studio. Over time, the other two founding partners left and other artists joined the studio and added their own unique vision and experience to the company's work. Through their collective talent and under Kevin's leadership, EFP has become the preeminent Arts and Crafts Revival pottery in the United States.

The philosophy of the Arts and Crafts movement is still as meaningful and valid as it was a hundred years ago.



Our dedication to our work and to each other is reflected in the pottery we create. By choosing to buy pottery from us, you are promoting an American ideal and a more sustainable lifestyle for all of us.

We invite you to experience our pottery. Discover why we say,

It's more than pottery. It's a lifestyle.

Photo ©2009 William Wright Photography.



OUR PROCESS

The Ephraim Faience Pottery artists collaborate on the design and creation of each piece. True to the legacy of Arts and Crafts, all of the work is done by hand in Ephraim's small-town Wisconsin studio. The potters use earthenware and stoneware clays from the Midwest to throw and sculpt the forms. The decorators formulate and mix the glazes and apply them to the forms. This hands-on process ensures the uniformly high quality of workmanship for which Ephraim Faience Pottery is known. For a detailed description of our process, please see www.ephraimpottery.com/how.htm.

Prices shown are subject to change without notice. Pieces shown in this catalog and/or on www.ephraimpottery.com may be discontinued at any time without notice.



The inspiration for this piece comes from time spent watching seals on the beautiful California coast. The serene self-satisfaction of a seal relaxing on a rocky beach takes place against a backdrop of watery blue. As it turns its face toward the rays of sun streaming down from the rim, the gracefully curved body of the seal forms the handle of the pitcher.

Seal Pitcher

8¼" x 5½"

#C18 \$288.00

COLLECTING OUR WORK

Ephraim Faience Pottery's work is collected by lovers of fine pottery throughout North America. Each of our designs is a limited edition of 500 pieces, maximum. Each year we introduce approximately 30 to 40 new pieces. A design is automatically retired when 500 first-quality pieces have been sold; however, in order to make room in our line for new pieces, we often retire pieces before they sell out their edition. Upcoming retirements are announced in our newsletter and on www.ephraimpottery.com. We encourage customers who are interested in collecting to sign up for our email list by clicking on the link at the bottom of any page of our web site. More information about collecting can be found at www.ephraimpottery.com/collect.htm.

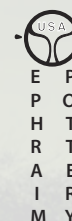
Ephraim Faience Pottery impresses a mark onto the foot of each piece before it is fired.

This helps collectors authenticate the piece and determine when it was made. In January of each year, we introduce new marks that are used for all pieces made during the course of that year. The marks for 2009 are shown here.

The mark used for larger vases, right, has a tick mark at the 9 o'clock position on the round EFP logo. The foot of each vase also bears the signature of the principal artist (usually the potter or sculptor).

The marks used for vases with a small foot are shown below. A tick mark appears at the 9 o'clock position on the round EFP logo. The potter's initials appear in the two lower segments of the logo.

Bios of our artists can be found at www.ephraimpottery.com/bios.htm.



GLAZE COLOR CODES

AG	Antique Green	CP	Crystalline Purple	MO	Moss	SO	Snow
AG-Y	AG with Yellow	DS	Desert Sun	PG	Prairie Grass	SY	Satin Yellow
AG-B	AG with Burgundy	FA	Faience	PK	Pumpkin	SU	Sunlight
AU	Aurora	IN	Indigo	SB	Seaspray Blue	WI	Willow
BC	Blue Curdle	LG	Leaf Green	SK	Sky	YC	Yellow Curdle
CN	Chestnut Green						

www.ephraimpottery.com/glazes.htm

IMPORTANT INFORMATION ABOUT OUR POTTERY

OUR POTTERY IS NOT WATER-TIGHT. We do not recommend putting water directly in our vases. If you wish to display live flowers, we suggest using a protective floral liner (a glass or plastic cup works fine) and a drip pan in order to protect the life of your piece and your furniture from water damage.

As with any other work of art, exposure to extremes in temperature is not recommended. Art pottery should be dusted with a dry, soft cloth. Although there is no lead in any of our glazes, we do not consider our art pottery to be food safe.



OLD FAVORITES

The pieces on these pages were introduced in previous catalogs but are still available. More "old favorites" are shown on our web site. Since these pieces are made to order, please allow 4-6 weeks for shipping. Get them now before they are retired!



Wispy Wheat Cabinet Vase

4½" x 4½"
#460 \$108.00



Rainforest Jewel

3" x 4½"
#A04 \$178.00



Hanging Bat Cabinet Vase

4¼" x 3½"
#361 \$98.00



Craftsman Lantern

7" x 7"
#A26 \$248.00



Pasadena Corbel

9" x 4½"
#A31 \$218.00



Large Bungalow Rose Vase

11¼" x 5"
#410 LG, SY,
CN, CP, SB, IN
\$238.00



Clover

5" x 3¼"
#A14 \$118.00



Under the Eaves (bats)

7½" x 5¼"
#A27
\$228.00



Summer Oak

7" x 4"
#A28 \$198.00



Lone Pine Gorge

11½" x 6"
#A29 \$398.00



Climbing Black Bear Vase

11½" x 4¼"
#406 \$316.00



Seven-Handled Vase

11¾" x 10"
#962
\$800.00

AG



Star Fern – Large

10½" x 5½"
#516 \$328.00



Tulip Bud Vase

8¼" x 4"
#B02 \$178.00



Mountain Grizzly

7¼" x 8"
#A33 \$328.00



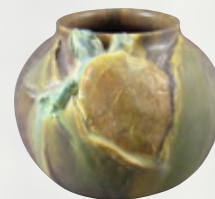
San Juan Island Thistle
4½" x 4¾"
#A12 \$188.00



Delightful Daisies
2¾" x 3½"
#A11 \$118.00



Artichoke
3½" x 4½"
#622 \$118.00



Turtle Cabinet Vase
2¾" x 3¾"
#B35 \$138.00



Twilight



Midday

Koi Pond
9¾" x 8½"
#A32 \$348.00



Highland Thistle
15¼" x 5"
#A13
\$348.00



Turtle Triplets
11½" x 5½"
#B07
\$298.00



Chicory
9" x 4¼"
#A16
\$218.00



Star Fern - Medium
8" x 4¾"

#515 AG, PG, SK \$178.00

#515F CP, CN, IN, LG, PK, SB, SY \$148.00



Water

Alligator
3½" x 7½"
#A34 \$298.00



Sand



Queen Anne's Lace
5¼" x 10½"
#640 \$278.00



PG

SK

Blossom
5¼" x 4¾"
#627 \$108.00



SK

PG

SU

Pear Gourd
6" x 4"
#628 \$98.00



Garlic
3½" x 4"
#615 \$98.00



Heartland
8" x 5½"
#A20
\$288.00



Indian Paintbrush
8¼" x 5¼"
#A18 \$228.00



Dandelion
7" x 3¼"
#A21 \$198.00



SO

In the far northern reaches of Wisconsin, wild places still exist. Traveling the back roads, it is still possible to come across a rustic old fire lane or logging road lined with tall pines. In this boreal wilderness, the soft rushing of the wind and the fresh, clean scent of pine wash through you, sweeping the dust from the corners of your soul. With its roots buried firmly in the earth and its uppermost branches sweeping the sky, the pine tree harmoniously links the heavens and earth in a universal symbol of peace. The Rustic Pine vase attempts to capture the peaceful reverence of a pine forest in the quietest seasons: autumn and winter.

Rustic Pine

4¾" x 5"

#C11 SO, AR (see page 7) \$128.00

Story card available with purchase.



Snowy Juniper

5¾" x 3¾"

#B10 \$138.00



Snowy Blueberry

3½" x 3½"

#B12 \$138.00



Snowy Winterberry

3" x 4½"

#B11 \$138.00

READY TO ORDER?

Please call us toll-free at 1-888-704-POTS (7687). We will be glad to assist you personally from 9:00 a.m. to 5:00 p.m. CT Monday through Friday. After hours, you may leave a voice mail message. You can also fax (920-648-5357) or mail the enclosed order form to us (203 W. Lake St., Lake Mills, WI 53551). Please note that we do not offer online ordering.

VISIT OUR GALLERY AND STUDIO

Ephraim Faience Pottery's studio and gallery are located in Lake Mills, a charming small town in southern Wisconsin. The gallery is well-stocked with the pieces shown in this catalog. In addition, special gallery-exclusive pieces as well as discounted seconds and irregulars are also available. Our gallery also carries a carefully chosen selection of beautiful Arts and Crafts accessories, magazines and furniture. On weekdays, we sometimes open our studio for pottery-throwing demonstrations. There is no set schedule for demos – you will just have to stop by and see if the potters are throwing that day!

Lake Mills is conveniently located just south of Interstate 94 about 25 miles east of downtown Madison. Lake Mills is within easy driving distance of several other Midwestern cities, including Milwaukee (about 1 hour), Chicago (about 2.5 hours), Dubuque (about 2 hours), and the Twin Cities (about 4.5 hours). The address is 203 W. Lake St., Lake Mills, WI 53551 (GPS coordinates 43.080009, -88.91334). Current hours for the gallery are listed at www.ephraimpottery.com/gallery.htm, or call or email the gallery directly for information (920-648-3534; gallery@ephraimpottery.com). We hope that you will be able to visit soon!

