



Ephraim Faience Art Pottery



Flora and Fauna



Wood Violet

3¾" x 6½"

#B09 \$198



SO

AR

Juniper

5¾" x 3¾"

#B10 \$138

Snow (SO), Autumn Reflections (AR)



AG

AL



Marsh Cattail

7" x 4¼"

#B32 \$198



AR

Antique Green (AG), Algae (AL), Autumn Reflections (AR)

A beehive is just too tempting for a young black bear. Sizing up the situation, he waits for just the right moment to reach in to pilfer the sweet, sticky treat. The honey thief will not go unpunished. The furious bees' stinging punishment is a small price to pay for a taste of their tantalizing golden nectar.

The Honey Thief

10" x 3¾"

#D15 \$328





The bear has always held a prominent place in Native American culture and mythology. Native Americans recognize that the bear can be both fierce and gentle, and that female bears are both protective mothers and brave hunters. Although different cultures have different myths and legends about them, bears commonly symbolize courage, strength, protection, and life. As the bear hibernates, so, too, does the spirit of the bear sleep in our hearts, ready to be awakened and called upon when needed.

Awakening

5½" x 6½"

#E08 \$218

Autumn Wheat (AW), Moss (MO), Stone (ST), Snow (SO)

Story card included with purchase.

The rare, wild Lady's Slipper Orchid is sometimes called the Moccasin Flower. An Ojibwe legend tells of a brave young woman who risked her life to save her people. One winter, a terrible disease struck her village. Many fell ill and died, including the medicine man.

With all hope gone, the chief asked her husband, who was his messenger, to make an unprecedented winter trip to the next village for medicine. As he was preparing to leave, the messenger himself fell ill. His wife, fearing for his life, slipped unnoticed out into the cold and ran across the frozen drifts to the neighboring village. The next morning, the people of her village were startled to hear her voice calling to her husband from the forest. They ran out and found her lying in the snow, her feet frostbitten and bleeding, but with the medicine needed to save her husband and the other sick villagers in her pack. They carried her back to her lodge and wrapped her feet in warm, thick deer skins. She was honored by her people for her sacrifice and devotion, and upon her death her foot wrappings became little yellow orchids: the Lady's Slipper, or Moccasin Flower.



Moccasin Flower

7¾" x 3½"

#E14 \$168

Specify red or yellow flower.

Story card included with purchase.



The open, welcoming form of this bowl invites you to sit, relax, and chat awhile. With its earthy colors and classic oak and acorn motif, it is a comforting presence on a side table or bookshelf.

Autumn Acorn Bowl

3¾" x 6"
#D16 \$168



OS



MO

The many varieties of oaks provide an ongoing source of inspiration for our artists. In this case, the interesting pointed shape of pin oak leaves wreathes the top of the vase. Acorns further enhance the design, which is glazed in two color combinations reminiscent of a pleasant autumn day.

Pin Oak

7" x 6"
#D07 \$198
October Sky (OS), Moss (MO)



No tree conveys a sense of strength and resilience like the proverbial mighty oak. The tiny acorn contains everything necessary to grow into a strong, tall tree that is able to withstand the ravages of weather and time. This piece reminds us that strength and resilience, while they may be manifested on the outside, originate in that essential kernel within.

Stalwart Oak

12" x 5¾"
#C13 \$298

Story card included with purchase.

Artist Anniversary Series

Glazer John Raymond collaborated with potter Kevin Hicks to create the Indian Summer Vase in celebration of his tenth anniversary with Ephraim Pottery. When John started with Ephraim in September 2001, he had long admired Arts and Crafts but had never worked in the style. When Kevin offered him a position to head up EFP's glazing department, "I felt like my prayers had been answered," John says. Now, ten years later, he calls working at EFP "very inspiring. I have an even greater appreciation for the contemporary work that is being done and for the 'Old Masters' of the time."

John enjoys the sharing and discussion of creative ideas that is such an integral part of the product development process at Ephraim. When John decided that he wanted to create a vase with a pin oak motif for his anniversary piece, he came up with a design and brought it to Kevin. Kevin and John worked closely on the development of the piece, with Kevin translating John's drawing into a three-dimensional "canvas" for John to glaze. John chose the pin oak because "the shape of the leaf is especially interesting to me. It may not be the most colorful, but what other leaf hangs on to enjoy the great Wisconsin winters?!"

Who knows what other ideas will come to John as he rides back and forth to work on the local bike trail? Sharing ideas opens a creative dialogue, leading to even more ideas that in turn change and grow. "There's certainly never a dull moment!" affirms John. "I just hope that I can continue to grow in my understanding of glazes so that I can offer more new colors, color combinations, techniques, and improvements." John also wishes to thank those who have purchased Ephraim pottery. "I hope each piece is as meaningful to you as it is to us as we're creating it."

All Artist Anniversary Series pieces are limited editions and are available for order for one year only. The ordering deadline for the Indian Summer Vase is June 1, 2012.

Indian Summer

12¾" x 6¼"

#E10 \$348

Story card included with purchase.



10th Anniversary pieces include this special mark on the bottom.

Bountiful Berries



The bee is an amazing creature. Without it, many foods and flowers, not to mention honey and wax, would not exist. The bee we recognize as our present-day honey bee has been around for more than one million years. The species is currently in peril due to a number of threats mainly caused by modern human society. We hope that our bee-motif pieces will remind people of the plight of this incredible creature.

Your purchase helps Ephraim Pottery support the Xerces Society for Invertebrate Conservation, a non-profit organization that protects wildlife through the conservation of invertebrates, including bees, and their habitat. More information can be found at www.xerces.org.

Bee & Blackberry

5 1/4" x 3 1/2"

#D05 \$148

Antique Green (AG)

Story card included with purchase.

Laura was inspired to create this piece from dewberry vines growing along the edge of the woods near her home. The dark juicy berries of the dewberry plant closely resemble blackberries; in fact, both plants are members of the rose family. Unusual features of this piece include sculpted canes that appear to pierce through the top rim of the vase, as well as a slightly flattened, four-sided form. The sensitive glazing makes this piece a stunner.

Dewberry

8 1/4" x 5"

#D24 \$238

Desert Sun (DS)





SO

LI

Garland of Berries

3¼" x 5"

#B33 \$118

Snow (SO), Lichen (LI)

Summer is blueberry season in northern Wisconsin. The dusty blue berries glow in the dappled sunlight of the forest floor and along shady wooded trails. The small, tart fruit is sought by bears and berry pickers alike, although preferably not at the same time!

Wild Blueberry *(above)*

7¾" x 4½"

#D01 \$198

Desert Sun (DS), Mossy Shore (MS)

Wild Blueberry (Round) *(below)*

5¾" x 5½"

#E11 \$198

Desert Sun (DS), Mossy Shore (MS)

DS

MS

MS

DS



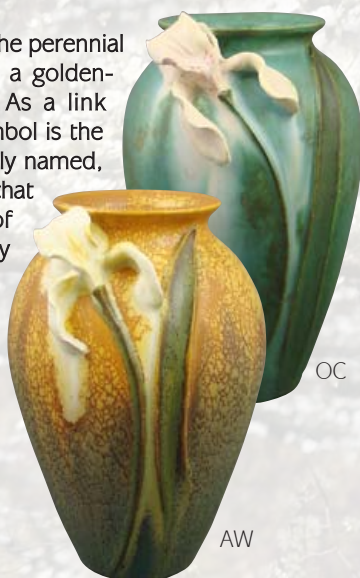
The iris is a beloved early bloomer in the perennial garden. In Greek mythology, Iris is a golden-winged messenger of the gods. As a link between heaven and earth, her symbol is the rainbow. As a flower, the iris is aptly named, boasting large, showy blooms that come in virtually every color of the rainbow. Here, delicately sculpted irises in a range of colors sway in the gentle spring breeze.

Springtime Iris

6½" x 4"

#E02 \$138

Rainstorm (RA), Dark Forest (DF), Ocean (OC), Autumn Wheat (AW)



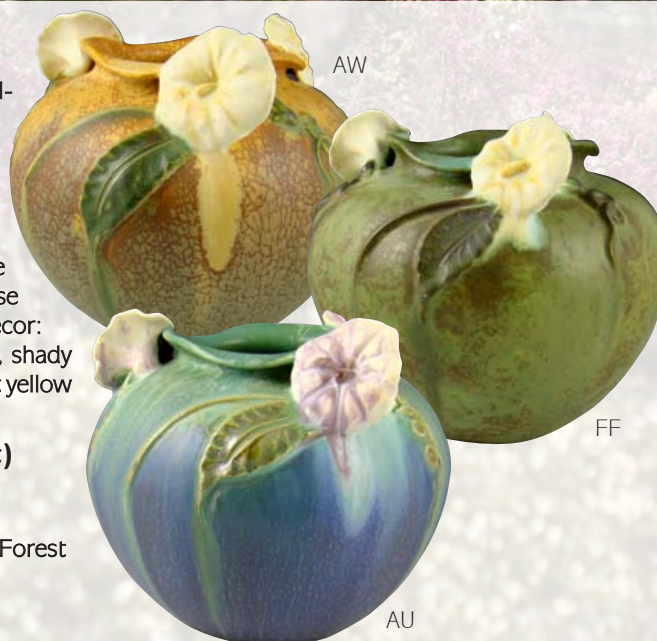
Morning glories, their tendrils spiraling along the fence, turn their faces to greet the morning sun. This trio of pretty white blooms will bring a bit of cheer to even the darkest corner—no natural sunlight needed! Our glaze artists have created three beautiful color combinations. Choose a color to suit your mood or your decor: cool morning blues (Aurora); restful, shady green (Forest Floor), or golden sunset yellow (Autumn Wheat).

Glorious Morning (Short)

5" x 5¾"

#E03 \$168

Aurora (AU), Autumn Wheat (AW), Forest Floor (FF)



Orchids belong to the largest and most diverse family of flowering plants in the world. They can be found growing in virtually all climates and on every continent except Antarctica. The remarkable variety of flowers and colors are a great source of artistic inspiration. Here, cupped, spade-shaped blossoms cascade gracefully down a woody stem.

Trailing Orchid

11" x 6¼"

#E01 \$318

Autumn Wheat (AW), Desert Sun (DS), Dark Forest (DF)



A lovely white relative of the morning glory, moonflowers open in the evening and bloom through the night. Appropriate for such a tall piece, moonflower vines can grow to a height of several feet. The Moonflower Vase

is a perfect example of how together, the Ephraim artists can push the boundaries of their art to new limits. Paul, who has a talent for throwing tall pieces, created this form for Laura, who used it as a canvas for her beautifully sculpted flowers.

Moonflower

15½" x 6¼"

#D26 \$398

Artist Anniversary Series

Glazer and sculptor Becky Hansen created the Rocky Mountain Columbine Vase to commemorate her fifth anniversary working as an artist at Ephraim Pottery. Becky joined us as a glazer, but started training in sculpting in 2010. Being able to do both the sculpting and the glazing on her anniversary piece allowed her greater freedom to recognize her creative vision.

Becky chose to sculpt a columbine flower because it reminds her of those that she would see while hiking in the mountains of Colorado. It is here, surrounded by the beauty of nature, that she is most at peace and where her thoughts are the clearest. She explains, "The Crimson Star Columbine was one of the many varieties of columbines that were prevalent in the area. For me, the columbine became a symbol of joy and exhilaration as well as serenity and contentment. The backdrop glaze that I chose reminds me of how the blue skies would meet the mountain tops, where my hiking trail would eventually take me." Becky feels connected to each piece she works on, as well as to the people she is creating the pottery for. Working at Ephraim has made her realize that "it's not just about creating art, but about creating a bond between the artists and the collectors." She enjoys hearing about the meaning others find in her work. "That piece might be significant to me as well, but for different reasons," she observes.

Becky enjoys the constant exchange of ideas that takes place at Ephraim, as well as the freedom to explore and experiment. In addition to continuing to hone her sculpting skills, she looks forward to learning more from the other artists at Ephraim. "I intend to stay open to all the possibilities and opportunities that Ephraim has to offer," she says. "Each person at Ephraim takes pride in their work and I am hon-

ored to work among such talented, diligent people in such an encouraging and positive environment." All Artist Anniversary Series pieces are limited editions and are available for order for one year only. The ordering deadline for the Rocky Mountain Columbine Vase is June 1, 2012.



Rocky Mountain Columbine

9½" x 4"

#E05 \$268

Story card included with purchase.



5th Anniversary pieces include this special mark on the bottom.

More Blooms



Walking along the edge of the woods, you may see little flowers like these tucked under and amongst the ferns. These sweet little lilies are captured here in all four seasons: winter (SO), spring (SB), summer (LG), and fall (AW).

Nodding Lily

4½" x 3¾"

#C03 \$108



AW



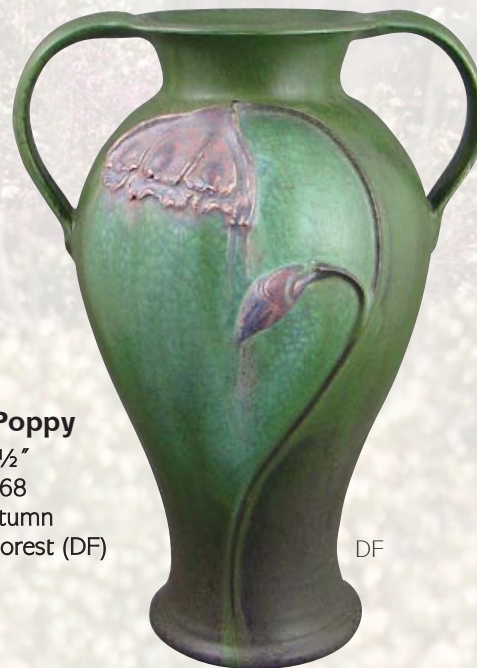
Enjoy the poppy's beauty year-round on this elegantly curved, two-handled vase. Interesting glazing enhances the graceful form and highlights the delicate blossoms. Our artists have captured these brilliantly colored flowers at the height of their glory.

Graceful Poppy

10½" x 7½"

#E19 \$268

Algae (AL), Autumn Wheat (AW), Dark Forest (DF)



DF



This elegant fluted vase presents a traditional Arts and Crafts motif on an unusual footed form. A stylized daffodil, glazed in rich earth tones, stands tall in the warm spring sunshine. The footed pedestal and the vessel are thrown separately and then joined to create a tall bud vase with a graceful line.

Fluted Daffodil

11¼" x 5¼"

#E04 \$268

Collecting Our Work

Ephraim Pottery's work is collected by lovers of fine pottery throughout North America. We create no more than 500 first-quality pieces of each design. We introduce and retire new pieces every year. Our limited edition art pottery is designed to be treasured for a lifetime... and beyond. Many collectors refer to our pottery as the "antiques of the future."

Our website, ephraimpottery.com, offers many resources for collectors. We also encourage customers who are interested in collecting to sign up for our email list and become a fan of our Facebook page. Details can be found on our website.



Milkweed is one of our most-loved native Wisconsin wildflowers. Best known as a food for monarch butterflies, in the fall milkweed pods fill with seeds to be dispersed by the wind. Here, we again explore the milkweed as a motif, but this time in a stylized form reminiscent of English Arts and Crafts.

Milkweed Melody

6¾" x 6"
#D04 \$218



ST



AG



BR

In some cases, less is more. And so it is with this simple piece: a couple stalks of wheat swaying in the breeze, presented on a classic form. Three choices in an earthy color palette make this a good option to add to a grouping of vases, and it's small size allows it to fit in virtually anywhere.

Harvest Wheat Cabinet Vase

7" x 3"

#D30 \$128

Stone (ST), Antique Green (AG), Brindle (BR)



Golden wheat rustles in the cool autumn wind, illuminated only by the pale yellow light of the moon. Harvest time is drawing near, and the cold will come soon enough. For now we'll enjoy the gentle breeze on our cheeks and the soft murmuring of the wheat as we dance in the moonlight under a dark canopy of stars. *Shine on, shine on, harvest moon...*

Harvest Rhapsody

10½" x 4¾"

#D17 \$268

Story card included with purchase.

Ginkgoes



Ginkgo Candle Holder

1 3/4" x 7"

#B23 \$98

Antique Green (AG),
Autumn Reflections (AR)

The ginkgo's vitality and tenacity are legendary. When the atom bomb was dropped on Hiroshima in 1945, it destroyed nearly every living thing in the area. However, some plants, among them four ginkgo trees, survived. Although the trunks of these hibaku trees were charred, they survived without major deformations and are still alive today. For this reason, the ginkgo tree is sometimes called the "bearer of hope."



Tree of Hope

4 1/4" x 6 3/4"

#B26 \$208

Story card included with purchase.

Two pieces with removable lid;
designed to hold a tea light candle.



Ginkgo Lantern

7" x 7"

#A25 \$248

Antique Green (AG),
Autumn Reflections (AR)





Throwing and sculpting merge in this unique bud vase. Three ginkgo leaves rise and lightly touch edges, creating a graceful fluted form with a softly undulating rim. More commonly seen in art glass, this narrow bud vase with a pedestal foot can be difficult to throw, but our artists enjoy pushing the limits of their abilities by taking on this sort of challenge.

Fluted Ginkgo

7" x 4¼"

#E16 \$168

Antique Green (AG), Honey (HY),
Autumn Reflections (AR)



Living a balanced life is one of the basic principles of the Arts and Crafts philosophy. Balance in one's surroundings contributes to an overall sense of balance in life. Here, graceful ginkgo leaves mirror each other within a symmetrical Prairie-style framework. The simple straight-sided form narrows gently, while the prominent horizontal rim balances the wider base, creating a sense of stability. Antique Green glaze complements the form and design, resulting in a harmonious fusion of classic Arts and Crafts elements.

In Balance

9¼" x 3½"

#E18 \$218

Antique Green (AG)

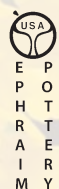
Story card included with purchase.



Marks

Ephraim Faience Pottery impresses a mark onto the foot of each piece before it is fired. This helps collectors authenticate the piece and determine when it was made. In January of each year, we introduce new marks that are used for all pieces made during the course of that year. The marks for 2011 are shown here.

The foot of each vase also bears the signature of the principal potter or sculptor who worked on the piece. Unfortunately, we haven't come up with an effective method of marking the glazer's name. A list of our artists and their bios can be found at ephraimpottery.com.



Flights of Fancy

The Whooping Crane is an elegant and ancient bird whose origins date to prehistoric times. Cranes are known for engaging in fascinating dancing behaviors during courtship, but crane pairs also dance for other reasons, including exercise, strengthening their bond, and relieving tension. In other words, the Whooping Cranes' reasons for dancing are not unlike those of their human counterparts! Imbuing the beautiful bird on this piece with a sense of life and movement was a challenge, and required careful collaboration between the potter and glazer to achieve the desired effect.

The Whooping Crane has been hovering on the brink of extinction for more than a century. Even with the advent of conservation and captive breeding programs, there are still only about 500 Whooping Cranes known to exist. Ephraim Pottery is a proud supporter of the International Crane Foundation (ICF), a non-profit organization headquartered in Baraboo, Wisconsin, whose pioneering work has been critical to the crane's survival. More information can be found at www.savingcranes.org.

Crane Dance

10½" x 3½"

#D27 \$298

Story card available with purchase.



This piece was inspired by an old copper bowl from California with a eucalyptus leaf motif. In Ken's hands, it became a ceramic bowl with a feather resting across the rim. Ken first began working on this idea several years ago, but it wasn't until this year that we had just the right glaze for it. We think this unique piece, with an Indigo feather atop a Brindle bowl, was worth the wait.

Feather

2¾" x 6"

#D22 \$168

The owl has been a symbol of wisdom and scholarship since ancient times. This wise old sage, with his stoic visage, would look good roosting in a study, perched atop a bookshelf, or resting quietly wherever his quiet, strong presence is desired.

The Old Sage

11" x 5"

#D21 \$298

Brindle (BR),
Autumn
Reflections (AR)



BR

AR

Artist Anniversary Series

As one of the founders of Ephraim Faience Pottery, potter Kevin Hicks is celebrating his 15th anniversary along with the company. As the only employee who has been with Ephraim since the beginning, in addition to being the owner and an artist, Kevin has a unique perspective on the last 15 years. "It's been interesting to see how the different employees, collectors, and communities have shaped our business. EFP has somewhat taken on a life of its own. A business seems so technical until you run one. When it comes alive, you see the impact of all of your choices and how they are reflected in the lives of everyone who is touched by the business. I have never been bored since Day One."

As an artist, Kevin has found Ephraim to be a place where he can challenge himself, collaborate with other artists, and present his ideas to the world. "I enjoy being around a group that likes to push boundaries and be a leader," he says. From working with new materials to exploring new techniques, Kevin sees the current group at Ephraim becoming more unified in how they approach the challenge of pushing limits. This sense of exploration and being on the verge of taking off in a new direction is the inspiration behind Take Flight. "The mysterious nature of birds and how they possess such freedom in flight inspires me. The raven, with its intelligence and striking dark color, seems especially mysterious. On this piece, the raven is perched on a branch, ready to take off into the unknown. This

is how Ephraim feels to me right now: perched on the verge of the unknown, ready to take off for something wonderful and exciting."

Kevin credits his fellow artists at Ephraim with inspiring him to push his artistic and technical limits. "I've grown artistically in ways I never would have without them," he notes. "I see the world through an artist's eyes much more than I ever did before." Moving forward, Kevin says that he'll try to fit in as much artistic exploration as he can, and he looks forward to the new pottery—as yet unknown—that he will create in future years. Kevin is both thankful for the enthusiasm that collectors have for Ephraim pottery, and humbled by it. "I'm so happy that our passion has ignited a passion in collectors. It is inspiring to all of us."

All Artist Anniversary Series pieces are limited editions and are available for order for one year only. The ordering deadline for Take Flight is June 1, 2012.



DF

RA



15th Anniversary pieces include this special mark on the bottom.

ST

Take Flight

11" x 4 3/4"

#E15 \$298

Dark Forest (DF), Rainstorm (RA), Stone (ST)
Story card included with purchase.

More Flights of Fancy



PK

AL

Dragonflies are one of the best-loved Arts and Crafts motifs. Three dragonflies dance all the way around this piece, making for perfect viewing from any side. Three color combinations remind us of different aspects of the dragonfly's world: cool waters, grassy shorelines, and fiery summer sunsets.

Dancing Dragonflies (tall)

8" x 4½"

#D23 \$218

Pumpkin (PK), Algae (AL),
Rainstorm (RA)



RA

The storybook quality of this diminutive piece will enchant you. The form gently lifts the reddish-purple butterfly into flight against a deep blue sky. Let it capture your imagination — where will it take you?



Butterfly Cabinet Vase

5½" x 2½"

#D11 \$98



AL

AR

Three stylized dragonflies circle the rim of this symmetrical oval vase. Four interesting color combinations evoke different dragonflies in different seasons; one is sure to capture your fancy. Tuck one of these conveniently sized vases into a cabinet or bookshelf, or perch one on an end table.

Dragonfly Trio

6½" x 4¼"

#E06 \$178

Algae (AL), Autumn Reflections (AR),
Rainstorm (RA), Stone (ST)



RA

ST



Two bats hang out in their favorite pine tree, one with wings slightly outstretched, the other with its wings wrapped tightly around its body. When the last glimmer of sunset fades in the western sky, they'll take off for their nightly hunt. Before sunrise, they'll return to their haunt where they can rest, safe up high in the pine tree, until they're ready to hunt again.

The Haunt

11¾" x 5½"

#E07 \$298

Misty Forest (MI), Dark Forest (DF), Brindle (BR), Rainstorm (RA)

Bats are vital to the health of ecosystems around the world. These fascinating creatures help to control insect pests, pollinate flowers and disperse seeds. Sadly, the existence of these often-misunderstood creatures is threatened by white-nose syndrome, habitat reduction, and human interference in their environment. Ephraim Pottery is proud to support Bat Conservation International, a non-profit organization working to protect bats through education, research and conservation. More information can be found at www.batcon.org.



To sleep, perchance to dream... Fueled by the intellectual thought of the time, including the birth of modern psychology, Art Nouveau was rich in symbolism. Bats, as creatures of the dark, together with poppies, symbolize the mysterious unconsciousness of sleep.

Dream Time

4¼" x 6"

#C17 \$208

Specify orange or purple flowers

When the moon rises, the creatures of the night begin to stir. Ascending on silent wings, bats hunt stealthily between the treetops. Silhouetted in the moonlight, these monarchs of the dark rule by wit and wing, ceding their kingdom only with the coming dawn.

Moonrise

9" x 3¾"

#D08 \$198

Story card included with purchase.



Evergreens



This piece pays tribute to the well-loved "cabin-in-the-woods" of northern Wisconsin. Vacationers "Up North" are familiar with the little cottages built of rustic materials, many of them in the bungalow style. Square-paneled wooden windows frame cherished views of pine-filled woods and clean blue lakes. With this vase, you can have a little piece of the North Woods wherever you live.

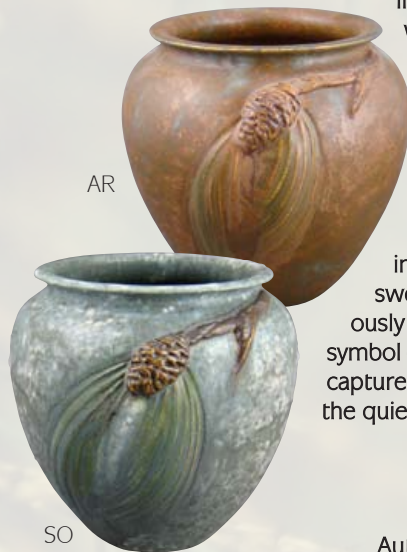
Bungalow Pine

8¼" x 5"

#E17 \$248

Algae (AL)

Story card included with purchase.



In the far northern reaches of Wisconsin, wild places still exist. Traveling the back roads, it is still possible to come across a rustic old fire lane or logging road lined with tall pines. In this boreal wilderness, the soft rushing of the wind and the fresh, clean scent of pine wash through you, sweeping the dust from the corners of your soul. With its roots buried firmly in the earth and its uppermost branches sweeping the sky, the pine tree harmoniously links the heavens and earth in a universal symbol of peace. The Rustic Pine vase attempts to capture the peaceful reverence of a pine forest in the quietest seasons: autumn and winter.

Rustic Pine

4¾" x 5"

#C11 \$128

Autumn Reflections (AR), Snow (SO),

Story card included with purchase.

Just as the sounds of the individual instruments in a string quartet join to create a beautiful piece of music, the pine cones on this vase merge with form and color to create a beautiful piece of art pottery. Four intricately sculpted pine cones nestle around the top of this slightly flattened, ovoid vase, indenting the rim into a pretty four-lobed pattern. The stems of the pine cones rise above the rim adding interest to the top of the vase, while pine needles of varying lengths anchor them to the form below.

Pine Quartet

8" x 5"

#E20 \$208

Rainstorm (RA), Brindle (BR),
Algae (AL), Stone (ST)





Who We Are

Ephraim Pottery is a small, independently run studio whose employees are still making pottery—really amazing art pottery—by hand in America. Our original designs and glazes are inspired by the beauty of nature and the Arts and Crafts aesthetic.

In 1995, Kevin Hicks was working as a potter for a commercial production pottery. His frustration with the lack of creativity in his job and the demands of mass production echoed the same discontentment experienced by the nineteenth-century Arts and Crafts potters. Seeking more satisfying work and an aesthetic he could embrace, Kevin co-founded Ephraim Faience Pottery in July 1996.

The birth of EFP fulfilled Kevin's long-standing dream to own his own studio. Over time, other artists joined him in the studio and added their own unique vision and experience to the company's work. Through their collective talent and under Kevin's leadership, EFP has become the preeminent Arts and Crafts Revival pottery in the United States.

At Ephraim Pottery, the philosophy of the Arts and Crafts movement is still as meaningful and valid as it was a over one hundred years ago. Our dedication to our art, to our customers, and to each other is reflected in our the pottery. By choosing our pottery and "buying American," not only are you adding beautiful art to your home, you are also promoting small business and economic sustainability.

We invite you to experience our pottery. Discover why we say,

*It's more than pottery.
It's a lifestyle.*



Important Information About Our Pottery

OUR POTTERY IS NOT WATER-TIGHT. We do not recommend putting water directly in our vases. If you wish to display live flowers, we suggest using a protective floral liner (a glass or plastic cup works fine) and a drip pan in order to protect the life of your piece and your furniture from water damage.

As with any other work of art, exposure to extremes in temperature is not recommended. Art pottery should be dusted with a dry, soft cloth. Although there is no lead in any of our glazes, we do not consider our art pottery to be food safe.

Visit Our Gallery and Studio

Ephraim Pottery's studio and gallery are located in Lake Mills, a charming small town in southern Wisconsin. The gallery is well-stocked with the pieces shown in this catalog. In addition, special gallery-exclusive pieces as well as discounted seconds and irregulars are available. Our gallery also carries a carefully chosen selection of beautiful Arts and Crafts accessories, magazines and furniture.

The front portion of the studio is open to the public and includes an exhibit and demonstration area. Exhibits include historical, educational and changing features. When potters happen to be working in the front studio, visitors can watch them throwing pots from a glassed-in observation area (weekdays only). Admission to the exhibit area is free and is open during regular business hours (closed holidays).

Lake Mills is conveniently located just south of Interstate 94 about 25 miles east of downtown Madison. Lake Mills is within easy driving distance of several Midwestern cities, including Milwaukee (about 1 hour), Chicago (about 2.5 hours), Dubuque (about 2 hours), and the Twin Cities (about 4.5 hours). The address is 203 W. Lake St., Lake Mills, WI 53551 (GPS coordinates 43.080009, -88.91334). See ephraim-pottery.com or call for current hours.



Ephraim Faience Pottery
www.ephraimpottery.com
888-704-7687

Our Process

Ephraim Pottery's artists collaborate on the design and creation of each piece. True to the legacy of Arts and Crafts, all of the work is done by hand in Ephraim's small-town Wisconsin studio. The potters use American earthenware and stoneware clays to throw and sculpt the forms. The glazers formulate and mix the glazes and apply them to the forms. This hands-on process ensures the uniformly high quality of workmanship for which Ephraim Faience Pottery is known. For more information about our process, please see www.ephraimpottery.com or visit our exhibit and demonstration area.



Our Glazes



AG
Antique Green



AL
Algae



AR
Autumn
Reflections



AU
Aurora



BR
Brindle



CN
Chestnut



CP
Crystalline
Purple



DF
Dark Forest



DS
Desert Sun



FF
Forest Floor



IC
Indigo Curdle



HY
Honey



IN
Indigo



LG
Leaf Green



MI
Misty Forest



MO
Moss



MS
Mossy Shore



OC
Ocean



PG
Prairie Grass



PK
Pumpkin



RA
Rainstorm



SB
Seaspray
Blue



SK
Sky



SO
Snow



ST
Stone



SU
Sunlight



SY
Satin Yellow

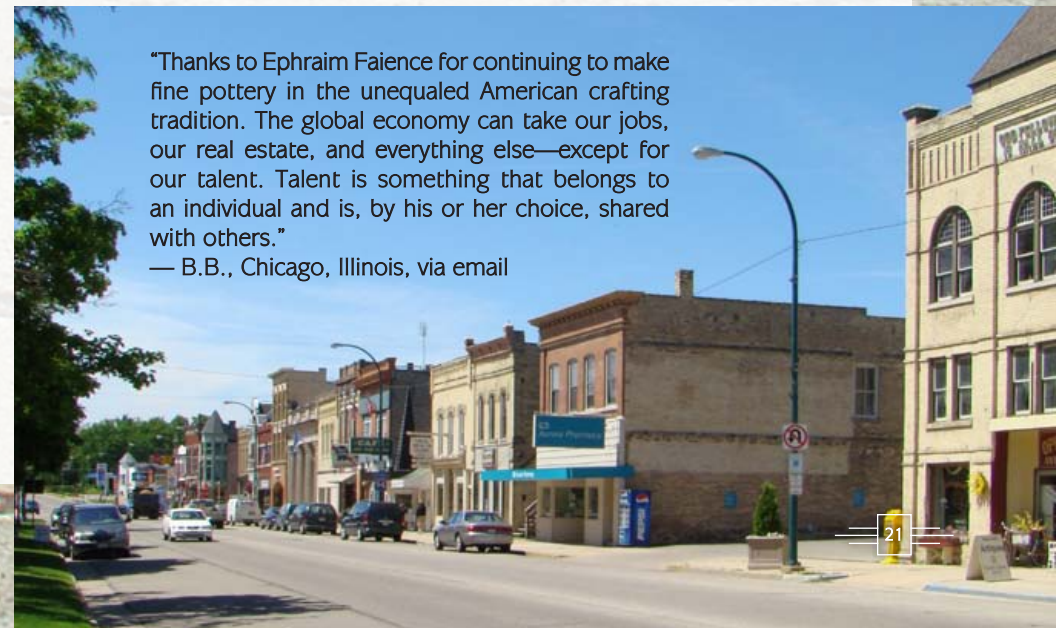


WI
Willow



"Thanks to Ephraim Faience for continuing to make fine pottery in the unequaled American crafting tradition. The global economy can take our jobs, our real estate, and everything else—except for our talent. Talent is something that belongs to an individual and is, by his or her choice, shared with others."

— B.B., Chicago, Illinois, via email



Reflections of the Past



Here, our stylized arched bridge appears on an acorn shape, resulting in the perfect blend of theme, design and form.

Oak Street Bridge

3¾" x 4½"

#C24 \$148



A copper vessel from the Arts and Crafts era inspired Ken to create this piece. His interpretation in clay of this classic form is enhanced by our new Brindle glaze, which gives the piece the look and feel of antique metal.

Classic Craftsman

4½" x 6¾"

#D18 \$208



Cats were worshipped as deities in ancient Egypt, and it has been said that the cat has never forgotten it. The cat goddess Bastet protected both humans and their cats, and together with the cat goddess Sekhmet, represented the balance of nature for the ancient Egyptians. Today, a mother cat is called a queen and is a fierce protector of her kittens. While cats have many distinctive qualities and moods, this piece attempts to capture the inherent regal nature of the cat.

The Queen

5½" x 4¼"

#C20 \$148



The dawn of the 20th century was a pivotal time in the development of the American Arts and Crafts movement. The now-classic simplicity of the decorative arts of that era is captured in our Century vases.

Our Algae glaze, with its earthy color and worn patina, perfectly complements the organic yet sophisticated form. Choose the size and style that best suits your home: small and simple with two handles, or tall with four handles, accented with leaves.

Century (large)

11" x 4½"

#D10 \$268

Century (small)

7" x 3½"

#D09 \$118



One of the first pieces thrown in our Lake Mills studio when we moved there in 2009, this design fuses the old with the new, the historical Arts and Crafts movement with the Revival. As we look to the past for inspiration, we create new work that carries treasured traditions into the future.

Revival

15¼" x 6"

#C26 \$368



With an imperious nod, Amenhotep dismissed his attendants and retired to his chambers. The day's lion hunt had been particularly draining. Finally alone, he allowed himself to give in to his exhaustion. As his sleep deepened, the lion he had hunted, a huge male with a majestic mane, appeared before him. Turning its massive head to face Amenhotep, it fixed its eyes on the pharaoh with a piercing intensity that made his blood run cold. With its eyes still locked on the pharaoh's, the lion's body began to shift and dissolve. Slowly, a scarab materialized. With wings outstretched, it caught a gust of wind and spiraled upward, drawn towards the sun as a moth to a flame. As it reached the sun, it exploded in a blinding flash, scattering a shower of sparks onto the desert sands. Amenhotep awoke with a start, gasping. There was no doubt the dream was a message from the gods. But, what did it mean?

Pharaoh's Dream

7½" x 7½"

#E12 \$288

Dark Forest (DF), Misty Forest (MI)
Story card included with purchase.

More Reflections of the Past



This five-sided piece is an essential addition to an Arts and Crafts pottery collection. Offered in a range of earthy colors, there is sure to be one that will fill that empty spot perfectly.

Quintessential

5½" x 5¼"

#C27 \$198

Antique Green (AG), Algae (AL), Autumn Reflections (AR),
Brindle (BR), Rainstorm (RA)



These pieces pay homage to the ground-breaking artistry of the historic Grueby Faience Company. The hallmarks of this award-winning pottery were harmony and symmetry of form and sculpture presented in richly textured organic colors. These pieces will satisfy the aesthetic requirements of even the most die-hard Arts and Crafts purist.

Harmony (left)

4" x 6½"

#D12 \$198

Antique Green (AG), Algae (AL), Autumn Reflections (AR), Brindle (BR), Rainstorm (RA)

Symmetry (right)

8½" x 5¾"

#D13 \$238



You can count on this piece to deliver good old-fashioned Arts-and-Crafts style. With a symmetrical leaf-and-bud pattern on a tall, clean form, it is a classic with timeless appeal. After all, good taste never goes out of style!

Integrity

10" x 4¾"

#E13 \$258

Antique Green (AG), Algae (AL), Autumn Reflections (AR), Brindle (BR), Rainstorm (RA)



Faced with the effects of rapidly increasing industrialization, proponents of the Arts and Crafts philosophy urged people to live simply and stay connected to nature. That may have been over one hundred years ago, but the idea sounds modern and the call still rings true. This piece, with its classic form and simple sculpted leaves, is honest, direct and unpretentious. It reflects our desire to live simply and to notice the everyday miracles in nature.

Simple Leaf

5¾" x 4¾"

#E21 \$158

Antique Green (AG), Algae (AL), Autumn Reflections (AR), Brindle (BR), Rainstorm (RA)

Story card included with purchase.

Old Favorites

Our "Old Favorites" have been around for awhile but haven't yet been retired. We don't keep these pieces in stock, but we will be happy to make them to order. Please allow 4-6 weeks for shipping. To view pieces still available for order that will be retiring soon, please see "The Last Hurrah" collection on our website.



**Wispy Wheat
Cabinet Vase**

4½" x 4½"
#460
\$108



Nocturne

4" x 6¾"
#D19 \$248



DS



AG

**Timeless Traditions Bowl
(4-sided)**

2¼" x 5½"
#B22 \$168



PK



AG

Heirloom Blackberry Short

5¾" x 4¼"
#522 \$198



Garlic

3½" x 4"
#615
\$98



AG-B (burgundy)

**Ring of Roses
Cabinet Vase**

3¾" x 4¾"
#B34
\$118

AG-Y (yellow)



**Glorious
Morning**

7¼" x 6½"
#C02
\$258



**Summer's
Delight**

7¼" x 7¼"
#C05 \$278



Forsythia

10¼" x 5¼"
#A08
\$238



Vanilla Orchid

6½" x 4¾"
#C08
\$198

Story card
included with
purchase.

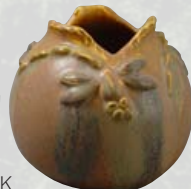


Spirit of the Prairie

3½" x 7¼"
#C14 \$268



SB



PK

Dragonfly Cabinet Vase

3" x 3½"
#A17 \$108



Wisteria

14" x 5"
#B18
\$288



**Maiden's
Tears**

10¾" x 5"
#A06
\$278

Story card
included with
purchase.



**Moonlit
Orchid**

10" x 4½"
#A05
\$238



Craftsman Lantern

Two pieces
with removable
lid
7" x 7"
#A26
\$248



Pasadena Corbel

9" x 4½"
#A31
\$218



Shady Lane

6½" x 3¾"
#C29
\$158



Twilight

Koi Pond

9¾" x 8½"
#A32 \$348



Midday



Beautiful Butterflies

8¼" x 4"
#A19
\$208



Night Flight

5½" x 7"
#C16
\$228



Bee in the Berry Patch

10½" x 4¼"
#D06
\$248

Story card included
with purchase.



Cherry Blossom

4½" x 6"
#D14
\$238

Story card included with purchase.



IC

BR

Evening Swallow

8½" x 5¼"
#C15 \$248



Japanese Maple

8¼" x 4"
#C22
\$188



PG



SK

Blossom

5¼" x 4¾"
#627 \$108



Beauty and the Bats

9¼" x 4¾"
#B15
\$228



AG

Seven-Handled Vase

11¾" x 10"
#962
\$800



Hope Rises

8½" x 4½"
#C21
\$208

Story card
included with
purchase.



Vineyard

11" x 5¾"
#D25 \$248



Cherry Orchard Short

6¾" x 5"
#A22 \$198

More Old Favorites



Snowberry
5½" x 6½"
#641 \$238



Solomon's Seal
11" x 4½"
#C06
\$218



Prairie Clover
6¼" x 4¾"
#B25 \$198
Desert Sun (DS)
Other colors
available online.



Snowy Winterberry
3" x 4½"
#B11 \$138



MO



AU

Bittersweet Pitcher
6¾" x 6¾"
#A15 \$298



IN



CN



LG

Hanging Bat Cabinet Vase
4¼" x 3½"
#361 \$98



IN



SB



PK



AG



CP



CN



LG

Ginkgo Cabinet Vase
3" x 4"
#B30 \$88



WI



SK



SU



MO

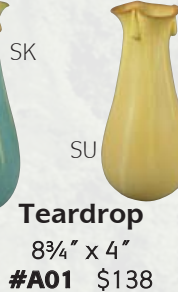


PG



WI

Woodland Spring
5¼" x 4¾"
#A02 \$148



SU



PG



MO

Teardrop
8¾" x 4"
#A01 \$138



WI



SK



SU



MO

Homestead
4¾" x 4¾"
#A03 \$98

Ready to order?

For your convenience, we offer several ways to place an order.

- Order online at ephraimpottery.com. Our online store is open 24/7 and you will receive an email confirmation of your order.

- Call us toll-free at 1-888-704-POTS (7687). We will be glad to assist you personally from 9:00 a.m. to 5:00 p.m. CT Monday through Friday. After hours, you may leave a voice mail message.

- Complete the enclosed order form and fax it to 920-648-5357.

- Complete the enclosed order form and mail it to 203 W. Lake St., Lake Mills, WI 53551.

If you have any questions, please call 1-888-704-POTS (7687) or email sales@ephraimpottery.com.

All photos of pottery and staff, pottery designs and text ©2011 by Ephraim Faience Pottery Inc.

Prices shown are subject to change without notice. Pieces shown in this catalog and/or on www.ephraimpottery.com may be discontinued at any time without notice.