



Ephraim Faience Art Pottery & Tile



Imagine...

New From
Our Studio

June 2012

Welcome!

Ephraim Faience is a small art pottery and tile studio located in Lake Mills, Wisconsin. Our artists create unique pieces inspired by the beauty of nature and the Arts and Crafts movement. Our goal is to reflect our dedication to our art, our customers, and each other in the pottery and tile we create.

Ephraim Pottery's artists collaborate on the design and creation of each piece. The potters throw and sculpt each vessel and paperweight individually. Our tiles are pressed by hand one at a time. After the pieces are bisque fired, the glazers apply the colors that make them come alive. This hands-on process ensures that we are able to maintain the high standards of quality and creativity that have made our work popular with collectors around the country.

All of our pottery and tiles are limited editions of 500 pieces or fewer. We introduce and retire pieces throughout the year. We encourage customers to sign up for our email list and like our Facebook page so that they don't miss any announcements of new or retiring pieces. There is an email sign-up box at the bottom of every page of our website.

We invite you to experience our pottery. Discover why we say, "It's more than pottery. It's a lifestyle."



What you see in this catalog is only the tip of the iceberg! If you like what you see here, we invite you to browse our web store. There are over 100 more beautiful pieces available at ephraimpottery.com.



With this sculptural vase, we introduce our classic Arrowroot Collection to a new generation of collectors. In 1998, potter Kevin Hicks developed a new double-walled throwing technique. Using this innovative technique and piercing, manipulating, and adding clay, he created the three vases in the original Arrowroot Collection: the Arrowroot (#806), Rolled Arrowroot (#809), and Woodland Arrowroot (#810). The Marsh Arrowroot (#026) followed in 2000. (These pieces have long since been retired and are no longer available for order.) Even though Kevin has used the double-walled throwing technique on other pieces since, he always enjoyed creating the arrowroot pieces and decided to revisit the motif. This piece evokes the feeling of a plant just coming up in spring, when life has begun to stir and bright green leaves are emerging.

Spring Arrowroot

Approx 8"h x 4½"w

#F01 \$248



Three budding water lilies float peacefully on a pond of deep blue-green. Rest your eyes on this serene vessel and experience the essence of tranquility.

Tranquility

Approx 7¼" h x 4¾" w

#F02 \$188



The ginkgo, a classic Arts and Crafts motif and symbol of peace and perseverance, is shown here in its fall colors. A leaf-and-nut pattern repeats three times around the top of the vase, evoking a balanced, peaceful feeling. The mottled golden glaze adds warmth and depth.

Golden Ginkgo

Approx 9¼" h x 4¼" w

#F03 \$208



Graceful stylized violet flowers and buds rest around the shoulder of this classic Arts and Crafts form. The deep purple and indigo petals droop sweetly, dripping pools of color onto the background. This charming vase is a treat for those who love flowers and color.

Wild Violet

Approx 5½" h x 5¼" w

#F06 \$208

Leaf Green, Stone



This little Grueby-style vase proves once again that good things do come in small packages. The classic leaf-and-bud pattern repeats four times around the vase in a harmonious symmetry. It's perfect for that shelf or corner that just needs "a little something."

Small Wonder

Approx 4½" h x 3½" w

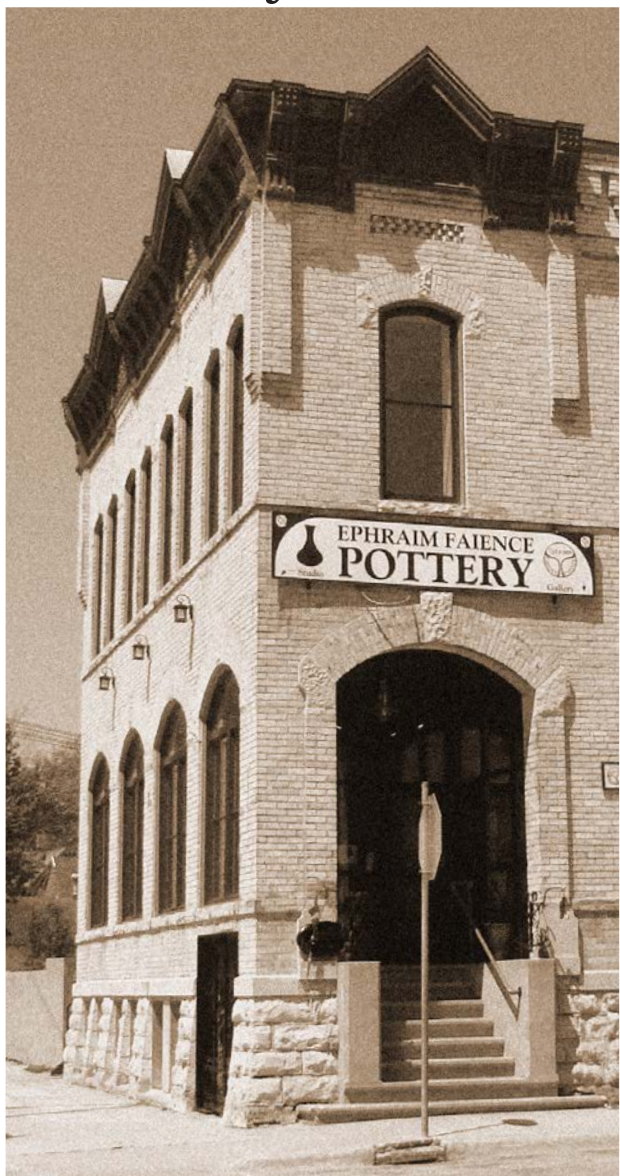
#F05 \$128

AG Antique Green, AL Algae, AR Autumn Reflections,
BR Brindle, RA Rainstorm

Our Wisconsin Gallery

Ephraim Pottery's studio is located in Lake Mills, Wisconsin. Our Wisconsin gallery, which is located on the floor above the studio, carries our full line of pottery and tile. In addition, experimental pieces and discounted seconds and irregulars are available. We also carry a carefully chosen selection of beautiful Arts and Crafts accessories, magazines and furniture. When visiting our Lake Mills gallery, we invite you to come downstairs to the demonstration area in our front studio (Lake Street entrance). If the artists are working in that area during your visit, you can watch them throwing and sculpting. You can also view the current exhibits of our pottery, which change a few times a year. Admission to the exhibit and demo area is free and is open during regular business hours (closed holidays).

Lake Mills is conveniently located on Interstate 94 between Madison and Milwaukee. Our gallery is located at 203 W. Lake St., Lake Mills, WI 53551. See ephraimpottery.com or call 920-648-3534 for current hours.





On a bright autumn day, a little songbird stops to rest in a ginkgo tree on its way south. The cut-outs between the leaves and at the front rim add interest and dimensionality, while the mottled dark golden glaze adds warmth and depth.

Autumn Visitor

Approx. 10½" h x 3¾" w

#F10 \$268



Three black bears encircle a forest of stylized trees on this imaginative piece. The cut-outs between the tree branches add interest and dimensionality. Glazed in an earthy palette of olive, brown, and rust.

Three Bears

Approx. 9" h x 5" w

#F12 \$348



One black bear cub naps on a tree stump while his brother rolls on his back and grabs playfully at his paws. Each one of these pieces is thrown and sculpted by hand; no molds are used. Whether you use them as paperweights or simply display them as charming pieces of figural art, they will surely brighten your day.

Sleeping Bear Paperweight

Approx 3" h x 4" w

#F04 \$98

Playful Bear Paperweight

Approx. 3½" h x 4" w

#F08 \$98



Back in 1998, we introduced the Darner Vase (#818), one of the first of many dragonfly-themed vases to come. The stylized dragonfly with the thin tail positioned between carved channels was a customer favorite. We are revisiting our classic darner motif with this tall vase. Choose our traditional combination of Leaf Green glaze with Satin Yellow accents, or our newer Algae glaze.

Darner Redux

Approx. 10" h x 3½" w

#F11 \$228

Algae, Leaf Green



The thistle motif has been popular in Arts and Crafts style decorative arts since the early days of the movement in England and Scotland, but its use in art goes back much further. The thistle has been the national symbol of Scotland for centuries, first appearing on a coin in 1470. Legend has it that in 1263, a band of invading Norsemen tried to sneak up on the sleeping Scots under cover of darkness. The surprise attack was foiled when one of the Norsemen stepped on a thistle, crying out in pain and alerting the Scots, who defeated the invaders.

Caledonia

Approx. 3½" h x 6½" w

#F09 \$208

Look for our next catalog of new work in your mailbox in October!



This studious fellow is a shorter, two-handled version of our Old Sage vase (shown online). Glazed in a rich olive green mottled with coppery brown flecks. With its rich, earthy coloring and versatile size, this piece would fit well just about anywhere in your home.

The Scholar

Approx. 4¾" h x 6½" w

#F07 \$188

Marks

Ephraim Faience Pottery impresses a mark onto the foot of each piece before it is fired. This helps collectors authenticate the piece and determine when it was made. In January of each year, we introduce new marks that are used for all pieces made during the course of that year. The marks for 2012 are shown here. Marks used in previous years can be found at ephraimpottery.com.



Tiles

Each of our tiles is pressed, trimmed, and glazed by hand. This makes each tile slightly different and uniquely beautiful. Our tiles have a notch in the back for hanging.



Leaf
Green



Glossy
Amber

The design for this tile was inspired by an antique stained glass window.

Prairie Tulip Tile

Approx. 4" w x 4" h

#F62 \$35

Leaf Green (matte), Glossy Amber

Ephraim Pottery tiles are porous. They are not suitable for wet areas such as tub surrounds. If our tile is going to be installed, we recommend sealing the glazed surface completely prior to grouting. This can be done by completely covering the front surface of the tile with masking tape. If a sealer is preferred, we recommend consulting a professional tile installer in your local area for advice on what would be the best product to use for your project.



Glossy
Amber



Glossy
Blue

Imagine being a raven, able to soar to great heights and look down at the earth below. Imagine seeing the world from a different vantage point, with all its beauty and possibilities stretching out before you. Imagine harnessing that inspiration to create something new — something that never existed before. Imagine...

The design for this tile was inspired by the central California coast and the opening of our new gallery in Cambria (CA).

Imagine Tile

Approx. 5" w x 7" h

#F70 \$65

Glossy Amber, Glossy Blue



Our New California Gallery

We are very excited to announce the opening of Ephraim Pottery West. Our second retail store is located in Cambria, California, about halfway between San Francisco and Los Angeles. A popular destination along scenic coastal Highway 1, Cambria is a pretty oceanfront town brimming with art galleries. We are thrilled to add our work to the town's great artistic mix.

Ephraim Pottery West is located at 728 Main Street, on one of Cambria's main thoroughfares. The gallery carries our full line of pottery and tile and the occasional second or irregular. Experimental pieces will be added to the inventory later this year. We also carry a carefully chosen selection of Archive Edition Textiles, Arts and Crafts magazines, and Voorhees Craftsman furniture.

If you live in California or are traveling in the area, we hope you will stop in Cambria and pay us a visit. We look forward to welcoming you to our new gallery. Please see ephraimpottery.com/our-cambria-gallery or call 805-924-1275 for hours.





The full moon casts a golden glow as it rises over a deep green pine tree. With its crackled glossy finish in rich tones of green and amber, this tile seems to glow from within.

Moonlit Pine Tile

Approx. 4" w x 6" h

#F66 \$55

Glossy



Algae



Stone

This tile was inspired by the Marsh Cattail Vase (#B32, shown on ephraimpottery.com) which has been a customer favorite since 2008. A pair of stylized cattails overlook a reedy marsh.

Marsh Cattail Tile

Approx. 2½" w x 5" h

#F63 \$35

Algae, Stone



"Dawn" and "Midnight" (facing page) carry on the venerable artistic tradition of using a beautiful young woman as an allegory. Such images were especially popular in the art and advertising of the late 19th and early 20th centuries. Here, a fair-haired maiden and a little bluebird greet the new day as dawn breaks over the horizon.

Dawn Tile

Approx. 5" w x 7" h

#F72 \$65

Glossy



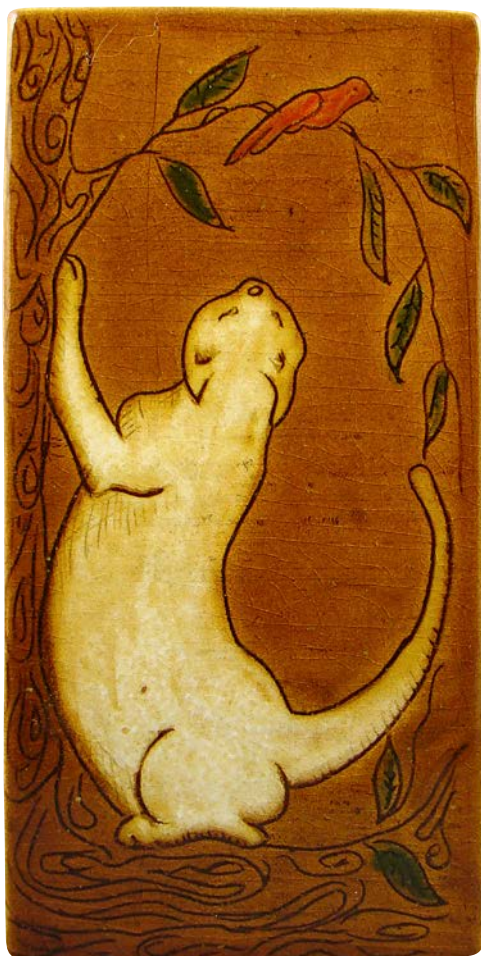
"Midnight" is the companion piece to "Dawn." Here, a dark-haired maiden nods off to Dreamland under a blanket of stars.

Midnight Tile

Approx. 5" w x 7" h

#F60 \$65

Glossy



This tile, and its companion, *Gone Fishing*, have a definite vintage English Arts and Crafts flavor. A curious cat stretches up to get a better view of a little bird perched on a branch above her.

The Birdwatcher Tile

Approx. 3" w x 6" h

#F75 \$40

Glossy Amber



This tile is a companion to The Birdwatcher. This time a fish in the backyard pond catches kitty's eye as she slinks down the tree. The glossy amber glaze enhances the vintage feel of this tile.

Gone Fishing Tile

Approx. 3" w x 6" h

#F74 \$40

Glossy Amber

Satin
Yellow



Cranberry



Indigo



Glossy

This tile was inspired by the old nursery rhyme: *Hey Diddle Diddle, the cat and the fiddle, the cow jumped over the moon. The little dog laughed to see such sport and the dish ran away with the spoon.* Perfect for a child's room, for the child at heart, or for someone you're "over the moon" about.

Over the Moon Tile

Approx. 5" w x 5" h

#F65 \$55

Glossy, Indigo (matte), Cranberry (matte), Satin Yellow (matte)



In the classic children's tale, the three little pigs each build a house, but only the third little pig's brick house keeps the wolf at bay. Here, the Three Little Pigs celebrate with a little song and dance after they have outsmarted the Big Bad Wolf.

Three Little Pigs Tile

Approx. 5" w x 5" h

#F67 \$55

Glossy



This charming tile has the look and feel of an illustration from an old children's storybook. A rabbit has come to the orchard in search of some tasty, ripe apples. It is finished in our new glossy glaze.

Apple Time Tile

Approx. 3" w x 6" h

#F76 \$40

Glossy Amber



A small, hidden world comes to life on this tile. In this fairy-tale world, life is magical and anything is possible. The glossy amber glaze enhances the vintage storybook feel of this tile.

Toadstools Tile

Approx. 3" w x 6" h

#F73 \$40

Glossy Amber

Important Information About Our Pottery

OUR POTTERY IS NOT WATER-TIGHT. We do not recommend putting water directly in our vases. If you wish to display live flowers, we suggest using a protective floral liner (a glass or plastic cup works fine) and a drip pan in order to protect the life of your piece and your furniture from water damage.

As with any other work of art, exposure to extremes in temperature is not recommended. Art pottery should be dusted with a dry, soft cloth. Although there is no lead in any of our glazes, we do not consider our art pottery to be food safe.

Ready to make a purchase?

For your convenience, we offer several ways to purchase our pottery and tile.

1. Order online at ephraimpottery.com. Our online store is open 24/7. You will receive an email confirmation of your order with an approximate ship date.
2. Call us toll-free at 1-888-704-POTS (7687). We will be glad to assist you personally from 9:00 a.m. to 5:00 p.m. CT Monday through Friday. After hours, you may leave a voice mail message and we will get back to you.
3. Shop our galleries in Wisconsin (see p. 8) or California (see p. 17).
4. Shop at one of the shows we do throughout the year. Please see the Events Calendar on ephraimpottery.com for current listings.

If you have any questions, please call 1-888-704-POTS (7687) or email info@ephraimpottery.com. We will be happy to help you.

Ephraim Faience Pottery
203 W. Lake St., Lake Mills, WI 53551
www.ephraimpottery.com
1-888-704-POTS (7687)

All photos of pottery and staff, pottery designs and text ©2012
by Ephraim Faience Pottery Inc.

Prices shown are subject to change without notice. Pieces shown in this catalog and/or on www.ephraimpottery.com may be discontinued at any time without notice.