



Ephraim Faience Art Pottery & Tile

Imagine...

New From
Our Studio

October 2012

Welcome!

Ephraim Faience is a small art pottery and tile studio located in Lake Mills, Wisconsin. Our artists create unique pieces inspired by the beauty of nature and the Arts and Crafts movement. Our goal is to reflect our dedication to our art, our customers, and each other in the pottery and tile we create.

Ephraim Pottery's artists collaborate on the design and creation of each piece. The potters throw and sculpt each vessel and paperweight individually. Our tiles are pressed by hand one at a time. After the pieces are bisque fired, the glazers apply the colors that make them come alive. This hands-on process ensures that we are able to maintain the high standards of quality and creativity that have made our work popular with collectors around the country.

All of our pottery and tiles are limited editions of 500 pieces or fewer. We introduce and retire pieces throughout the year. We encourage customers to sign up for our email list and like our Facebook page so that they don't miss any announcements of new or retiring pieces. There is an email sign-up box at the bottom of every page of our website.



We invite you to experience our pottery. Discover why we say, "It's more than pottery. It's a lifestyle."

What you see in this catalog is only the tip of the iceberg!
If you like what you see here, we invite you to browse our
web store. There are many more beautiful pieces available at
ephraimpottery.com.

Cover photo by Sandra Olson-Engel. Autumn Acorn Bowl (#D16) is available online at ephraimpottery.com.



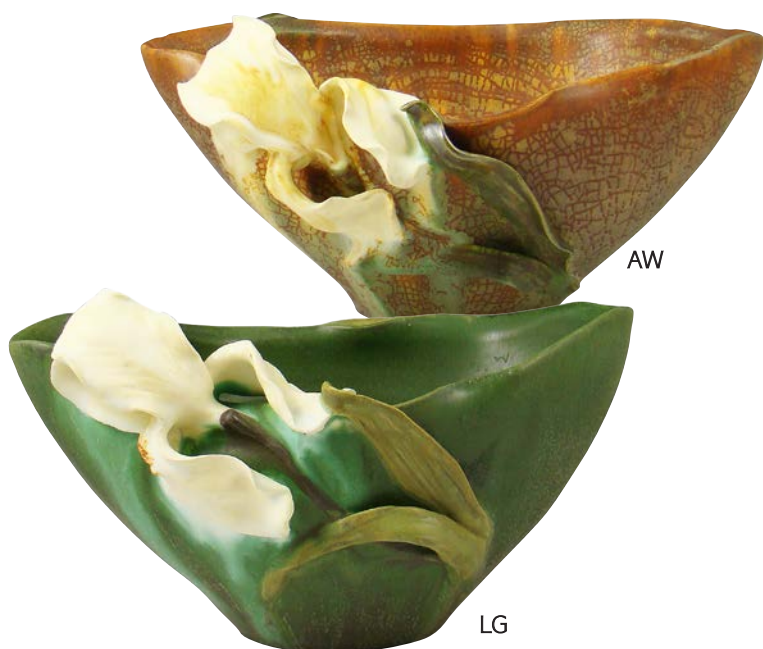
Our popular Garland of Berries pattern now adorns a graceful bud vase. Three trios of petite red raspberries rest around the low shoulder of the vessel. The berries are accented by carefully sculpted leaves and joined with simple vines. Warm yellow peeks through the muted gray-toned background at the top of the vase, suggesting sunlight, while cool green grounds the piece to the earth below.

Garland of Berries Bud Vase

Approx 5¾" h x 3½" w

#F13 \$128

Color: Lichen (LI)



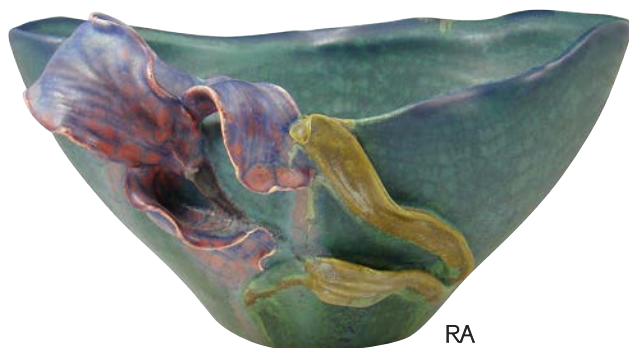
The iris is a beloved early bloomer in the perennial garden. In Greek mythology, Iris is a golden-winged messenger of the gods. As a link between heaven and earth, her symbol is the rainbow. As a flower, the iris is aptly named, boasting large, showy blooms that come in virtually every color of the rainbow. Here, delicately sculpted irises rest gently on the shoulder of an elongated oval bowl.

Springtime Iris Bowl

Approx 4½" h x 8" w

#F14 \$198

Colors: Autumn Wheat (AW), Leaf Green (LG), Rainstorm (RA)





RA

DO

This impressive piece offers a new twist—literally—on the beloved pine cone motif. Three tree limbs equally spaced around the top of the piece twist down to the shoulder, forming rustic handles. A pair of pine cones accented by long needles extends the design to nearly the full height of the piece.

3-Handled Pine Vase

Approx 11¼" h x 5¾" w

#F15 \$288

Colors: Rainstorm (RA), Dusky Olive (DO)



The white trillium, a perennial favorite, returns to our line-up on a shorter, rounded vessel. A trio of the large, white, three-petaled blossoms rings the top of the vase, adding a sculptural dimension to the rim. Golden rays of sunlight stream down, brightening the flowers floating above the forest floor.

Woodland Trillium

Approx 6¼" h x 6½" w

#F16 \$228

Color: Leaf Green (LG)



Deep in the woods, you discover a small pond hidden behind a stand of tall cattails. Dragonflies flit through the still air above waxy green lily pads. A little frog pops up, breaking the glassy surface, and gazes at you with friendly curiosity. The moment your eyes meet, a deep sense of knowing runs through you. It is clear, there is magic in this place. Bring this charming little frog into your home and write your own ending to this fairy tale.

Enchanted Pond

Approx 4½" h x 4¾" w

#F17 \$148

Color: Ocean (OC)

Important Information About Our Pottery

OUR POTTERY IS NOT WATER-TIGHT. We do not recommend putting water directly in our vases. If you wish to display live flowers, we suggest using a protective floral liner (a glass or plastic cup works fine) and a drip pan in order to protect the life of your piece and your furniture from water damage.

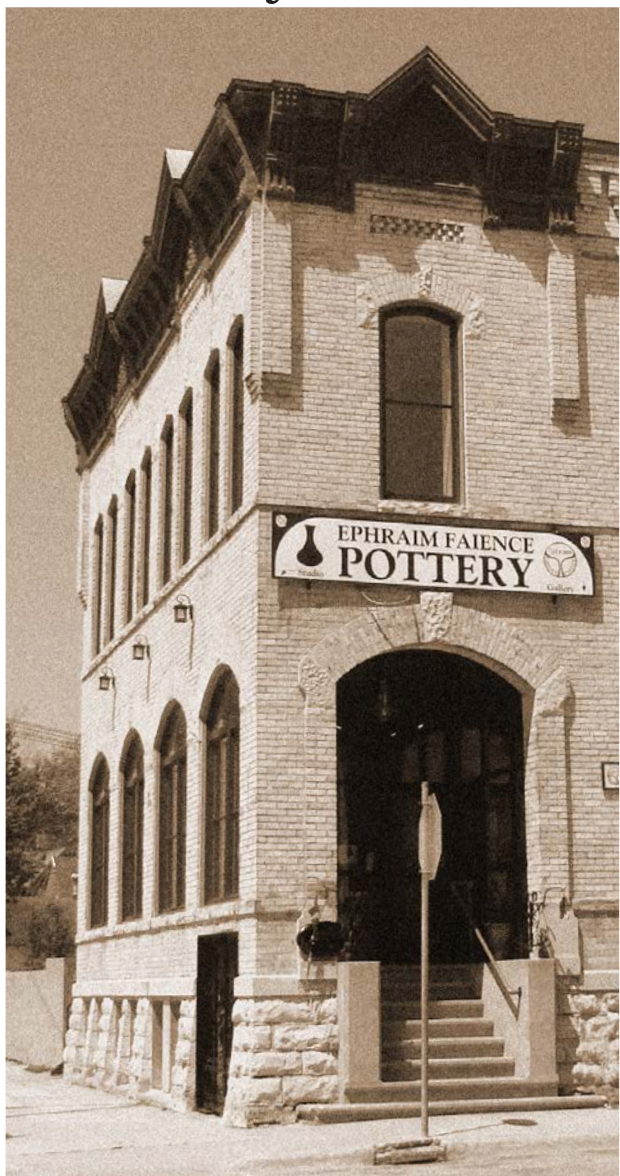
As with any other work of art, exposure to extremes in temperature is not recommended. Art pottery should be dusted with a dry, soft cloth. Although there is no lead in any of our glazes, we do not consider our art pottery to be food safe.

Our Wisconsin Gallery

Ephraim Pottery's studio and gallery are located in downtown Lake Mills, a charming, historic small town about 20 minutes east of Madison, Wisconsin. Just 1 mile south of I-94, Lake Mills' pretty downtown, with its old-fashioned central park, unique shops, and restaurants, offers a refreshing change of pace from the monotony of the interstate.

Our Wisconsin gallery, which is located on the floor above the studio, carries our full line of pottery and tile. In addition, experimental pieces and discounted seconds and irregulars are available. We also carry a carefully chosen selection of beautiful Arts and Crafts accessories, magazines and furniture.

Our gallery is located at 203 W. Lake St., Lake Mills, WI 53551. See ephraim-pottery.com or call 888-704-POTS (weekdays) or 920-648-3534 (weekends) for current hours.





There is no muse so generous, so bountiful, as Nature. From the tiniest acorn to the tallest oak tree, to the deep blue of the sky in October to the golden sunrise, each day she lays her gifts at our feet. The artist who accepts her invitation is then tasked with creating new works of beauty to share with the world. Be they great or small, each piece of our pottery pays homage to Nature, the finest of all artists.

Acorn Cabinet Vase

Approx 4¼" h x 3¼" w

#F18 \$98

Colors: Desert Sun (DS), October Sky (OS)



10th anniversary
pieces include
this special mark
on the bottom.



Artist Anniversary Series: Cinnamon Fern

Approx 7" h x 5¼" w

#F19 \$278

Colors: Antique Green (AG), Algae (AL), Feathery Leaf (FL)

All Artist Anniversary Series pieces are limited editions and are available for order for one year only. The ordering deadline for the Cinnamon Fern Vase is October 10, 2013.

Story card included with purchase.

Ken Nekola marks his tenth anniversary as a potter with Ephraim Faience in October 2012. Although 10 years is in itself a major milestone, Ken has been honing his craft since the early 1970s. He was a production potter for many years before coming to Ephraim in 2002.

Working in a production setting is very different than working in a studio environment. Of course, in both settings, the pottery needs to get made and orders need to be filled. One of the main differences is that in our small studio, our work is collaborative. Each artist's unique talents contribute to the pieces we choose to create, and each contribution is important to the smooth running of the studio. Reflecting on his 10 years at Ephraim, Ken recognizes that it has given him a unique opportunity to practice his craft. "Working at Ephraim Pottery has allowed me to do my best work as a potter, to refine my throwing skills and learn new skills in pottery surface decoration," Ken says. "I've gotten to work with a great group of talented people. I appreciate the supportive work environment, the camaraderie, and the high quality standards at Ephraim."

Ken continues to find inspiration in nature and the works of the Arts and Crafts movement. The piece he has chosen for his tenth anniversary combines many of the elements that have been most representative of his work over the last 10 years. The Cinnamon

Fern features a repeated leaf pattern, fiddlehead handles, slightly altered rim, and beaded foot on a Grueby-inspired form. The piece exhibits the overall symmetry that is so characteristic of Ken's work.

Moving forward, Ken plans to continue to carry on the tradition begun by the Arts and Crafts potters of the early 20th century. He will do more than just carry on, though: expect to see new designs from him in the future. "I enjoy the process of taking an idea through experimentation to a finished product," Ken notes. "It's especially gratifying to hear from collectors that they appreciate a particular pot that I may have had a hand in creating."





Having this piece in your home is like bringing a little corner of your garden indoors. Three orange flowers in various stages of bloom sit delicately around the shoulder of the piece. Nasturtium leaves with their distinctive round shape encircle the rim, which follows their delicate contours. The soft, warm greens and muted golds are simultaneously invigorating and soothing.

Nasturtium

Approx 5" h x 6" w

#F20 \$228

Color: As Shown



This piece combines masterful sculpting on a graceful vessel glazed in rich, flowing colors. The sculpting, while delicate and refined, makes a bold statement. The handles curve lithely, accenting the winsome form. The earthy colors gently unite the different elements, creating a beautiful and harmonious work of art.

Black Raspberry

Approx 11¼" h x 6" w

#F21 \$288

Color: As Shown



As the sun sets, bat colonies begin to stir. Taking off into the gloaming, they begin their nightly hunt for food. The shape of this vessel accentuates the position of the bat in flight, giving it the feeling of movement. The dark colors emphasize the transition from twilight to night as the bats take flight.

The Gloaming

Approx 4¼" h x 4¼" w

#F22 \$168

Colors: Dusky Olive (DO), Stone (ST)

Marks

Ephraim Faience Pottery impresses a mark onto the foot of each piece before it is fired. This helps collectors authenticate the piece and determine when it was made. In January of each year, we introduce new marks that are used for all pieces made during the course of that year. The marks for 2012 are shown here. Marks used in previous years can be found at ephraimpottery.com.





Three bats hang out under the rim of this unique candle pillar. When the last glimmer of sunset fades in the western sky, they'll take off for their nightly hunt. Before sunrise, they'll return to their haunt where they can rest until they're ready to hunt again.

The Haunt Candle Pillar

Approx 7¾" h x 5" w

#F23 \$178

Color: Misty Forest (MI)

Our California Gallery

Ephraim Pottery West, our second retail store, is located in Cambria, California. A popular destination along scenic coastal Highway 1, about halfway between San Francisco and Los Angeles, Cambria is a pretty oceanfront town brimming with art galleries.

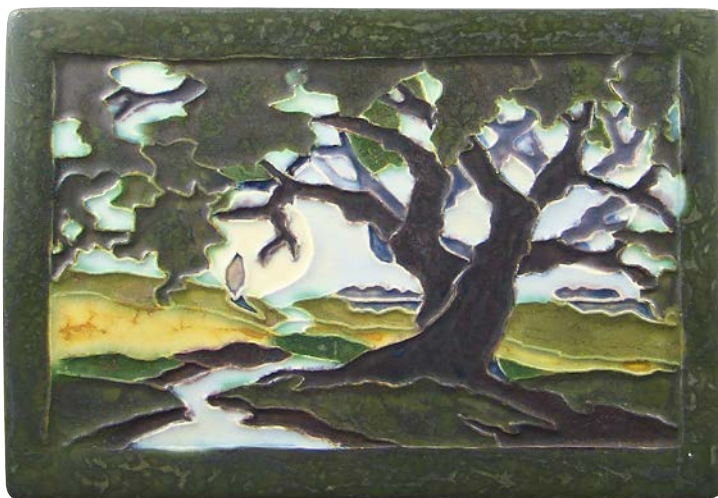
Located in Cambria's charming West Village, Ephraim Pottery West carries our full line of pottery and tile, including experimental pieces (as available). A carefully chosen selection of work by other artists and craftspeople is also available, including furniture by Voorhees Craftsman, textiles by Archive Edition, and lamps by William Morris Studio. We also exhibit the work of local artists working in complementary styles.

If you live in California or are traveling in the area, we hope you will stop in Cambria and pay us a visit. We look forward to welcoming you to our new gallery. Please see ephraimpottery.com/our-cambria-gallery or call 805-924-1275 for hours.



Tiles

Each of our tiles is pressed, trimmed, and glazed by hand. This makes each tile slightly different and uniquely beautiful. Our tiles have a notch in the back for hanging.



This gorgeous landscape tile is reminiscent of an Arts and Crafts woodblock print. From the shade of a gnarled old oak tree, we see the long rays of the sun stretch across a grassy meadow and dance off a clear blue stream.

Sunny Afternoon Tile

5" x 7"

#F79 \$100

Color: As Shown (Matte)

Important Information About Our Tiles

Ephraim Pottery tiles are porous. They are not suitable for wet areas such as tub surrounds. If our tile is going to be installed, we recommend sealing the glazed surface completely prior to grouting. This can be done by completely covering the front surface of the tile with masking tape. If a sealer is preferred, we recommend consulting a professional tile installer in your local area for advice on what would be the best product to use for your project.



GSA



GBL



GAM

We're welcoming this tile back to our line-up in three great new colors that reflect the changing seasons. Those familiar with our hometown of Lake Mills will recognize the picturesque footbridge over the inlet between the mill pond and Rock Lake.

Mill Pond Tile

4" x 6"

#F64 \$55

Colors: Glossy Amber (GAM), Glossy Blue (GBL), Glossy Sage (GSA)

CN



IN



GBL



CL



This stylized octopus with its flowing, tendril-like arms owes its inspiration to the Art Nouveau aesthetic. This is the inaugural piece in our new design-oriented Infinity Collection. A unique circular indentation on the back of the tile allows it to be hung on a wall in an infinite number of positions. In addition, the position of the octopus's body in one corner of the tile, as well as its symmetrical design, makes it suitable for creating patterns in a tile installation.

Infinity Octopus Tile

5" x 5"

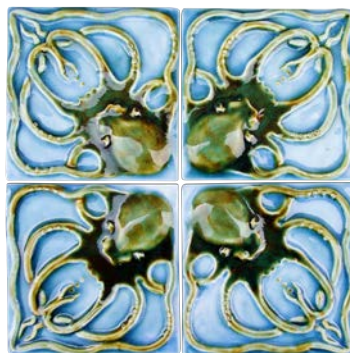
#F77 \$55

Colors: Glossy Blue (GBL), Coral Reef (CL), Chestnut Green (CN), Indigo (IN)



Left: Back of tile

Right: Four tiles in GBL





GAM



GSG

These baby bird siblings aren't quite sure that they want to leave the nest just yet. Out for a hop one morning, they are surprised by a visit from a pretty butterfly.

Out on a Limb Tile

5" x 7"

#F78 \$65

Colors: Glossy Amber (GAM), Glossy Sea Green (GSG)



Mr. Sun is indeed an old soul. While the origins of his warm countenance are lost in the mists of time, we know that personifications of the sun have long been evident in many cultures. Like the celestial sun, he is both ancient and timeless, eternal and born anew each day.

Old Sol Tile

5" x 5"

#F80 \$55

Color: Glossy Amber (GAM)



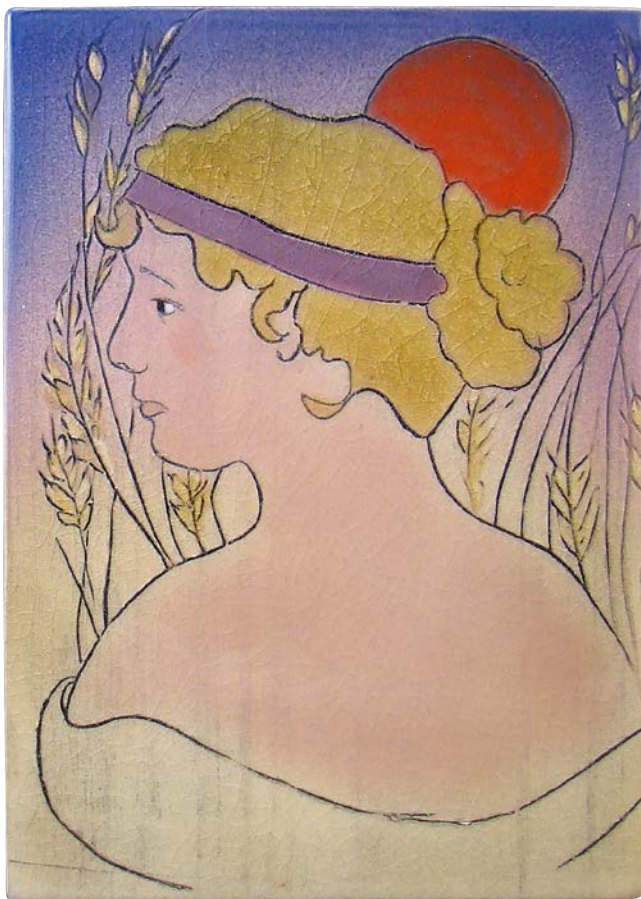
With its clean lines and striking shape, the calla lily exudes a sophisticated simplicity. This tile's symmetrical stylized pattern straddles the line between Art Nouveau and Arts and Crafts. The slightly muted colors add a touch of softness to the linear design.

Calla Lily Tile

4" x 8"

#F81 \$60

Color: As Shown (matte)



"Dusk" is third and final tile in our allegorical series depicting beautiful young women representing the time of day. Here, a flaxen-haired beauty wistfully bids farewell to the day as the sun sets on a field of wheat. Please see ephraimpottery.com for the other two tiles in this series, "Midnight" and "Dawn."

Dusk Tile

5" x 7"

#F82 \$65

Color: Glossy



In this charming design, a smiling Man In the Moon greets a pair of bats on a clear night sparkling with stars. The halo around the moon is convex, giving the tile additional dimension.

Moonlight Flight Tile

5" x 5"

#F83 \$55

Color: Glossy Blue (GBL)

ST



AL

A pair of stylized cattails overlooks a reedy marsh. A smaller version of this tile (2½" x 5") is also available; please see our online store at ephraimpottery.com.

Marsh Cattail Tile

5" x 5"

#F84 \$55

Color: Algae (AL), Stone (ST)



The design for this tile was inspired by an antique stained glass window. A smaller version of this tile (4" x 4") is also available; please see our online store at ephraimpottery.com.

Prairie Tulip Tile

4" x 8"

#F85 \$60

Color: Glossy Amber (GAM)

Ordering from Ephraim Pottery

This section contains important information about our ordering and return policies. If you have any questions, please call us at 888-704-POTS.

Delivery Time

The pieces shown in this catalog usually ship within two weeks (10 business days). For pieces shown only in our online store, the approximate order fulfillment time is shown at the top of each page. Please call our office if you have any questions about lead times.

Return Policy

Because each item is made by hand, no two pieces are exactly alike. The piece you receive will differ slightly in color, size and decoration from the example pictured. These variations are natural parts of the pottery-making process and should be expected. We carefully inspect each piece for defects, such as chips, cracks or glaze misses, before it leaves our studio.

We guarantee that all items shipped will be first-quality, non-defective and substantially the same as the example pictured. Your satisfaction is very important to us. If you are unhappy with your purchase in any way, please call us within 30 days of receipt of your order. We will work with you to find a mutually agreeable solution to your concern. Shipping and handling charges are only refundable in cases where we made an error. If there is a problem with your shipment, please save all packing materials and call our office within 1 week of receipt.

Shipping to Addresses in the United States

Orders under \$75 are shipped by USPS Priority Mail. Orders of \$75 or more are shipped by UPS Ground service. Shipping and handling charges are calculated based on the total cost of your order. The chart below lists our shipping charges. Additional charges apply for overnight, 2-day, or 3-day shipment. If Priority Mail is requested for orders over \$75, additional charges may apply.

Note: Orders of any amount going to APO/FPO addresses are shipped via the US Postal Service, insured Priority Mail.

Shipping Charges for U.S. Addresses*

<u>If your order totals:</u>	<u>Add:</u>	<u>If your order totals:</u>	<u>Add:</u>
Up to \$75	\$7.50	\$501–\$750	\$35.00
\$76–\$100	\$15.00	\$751–\$1,000	\$40.00
\$101–\$200	\$20.00	\$1,001–\$1,250	\$45.00
\$201–\$350	\$25.00	\$1,251–\$1,500	\$50.00
\$351–\$500	\$30.00	\$1,501 and over	FREE

*See ephraimpottery.com or call for shipping charges for orders to Canada.

Ready to make a purchase?

For your convenience, we offer several ways to purchase our pottery and tile.

1. Order online at ephraimpottery.com. Our online store is open 24/7. You will receive an email confirmation of your order with an approximate ship date.

2. Call us toll-free at 1-888-704-POTS (7687). We will be glad to assist you personally from 9:00 a.m. to 5:00 p.m. CT Monday through Friday. After hours, you may leave a voice mail message and we will get back to you.

3. Shop our galleries in Wisconsin (see p. 8) or California (see p. 16).

4. Mail your order to the address shown below. Be sure to add the correct shipping and handling fee. Please see the chart on page 27 for rates.

5. Shop at one of the shows we do throughout the year. Please see the Events Calendar on ephraimpottery.com for current listings.

If you have any questions, please call 1-888-704-POTS (7687) or email info@ephraimpottery.com. We will be happy to help you.



Ephraim Faience Pottery
203 W. Lake St., Lake Mills, WI 53551
www.ephraimpottery.com
1-888-704-POTS (7687)

All photos of pottery and staff, pottery designs and text ©2012
by Ephraim Faience Pottery Inc.

Prices shown are subject to change without notice. Pieces shown in this catalog and/or on www.ephraimpottery.com may be discontinued at any time without notice.