

Ephraim



Est. 1996

Pottery



Studio
Collection

Fall 2013–
Spring 2014

Welcome!

Dear pottery and tile enthusiasts,

What an incredibly exciting time it is here in the Ephraim studios! It has been so rewarding working with our group on all of the new projects that have been going on since April. We have created a beautiful location for our Lake Mills store, witnessed the passion of John working in his new woodshop, been inspired by Paul's exciting new approaches to glaze development, and gotten to know Laura Taylor as she begins her journey with us. This energy has translated into another offering of pottery and tile that I am truly proud of.

Having been able to experience our new store in Cambria, California, last year at the grand opening, Barbara Voss, our Lake Mills store manager, noted how nice it would be for her store to have that much space. Though our little Lake Mills store served us well, we all agreed that it would be nice to have a larger space in a more visible location to accommodate all the new things we are doing at the studio. We are very fortunate to have found a great space right downtown across from the park that is sure to serve us well for years to come.

With John Raymond hard at work designing and producing frames and tile stands, our tiles have never looked better! John's attention to detail has made his woodworking second to none. I am so proud to have had the opportunity to help John develop one of his lifelong passions into a career. Seeing the quality workmanship that goes into each frame and stand has made me so happy that we took the chance to develop a woodworking studio. I hope you get the opportunity to enjoy the craftsmanship he puts into each piece.

Paul McVicker's excitement in getting to work in the lab has translated into a huge benefit in our development of new glazes that in turn created new inspiration for our artists. The addition of several new glazes has expanded our palette and generated new possibilities for our artists. Each day we come in to check out how new designs came out of the kiln with new, fresh colors to complement them. Paul has embraced this challenge with enthusiasm and has proved to himself and to us that our lab is in good hands.



Our newest member, Laura Taylor, has not only taken on our sales manager position, but has also helped take work scheduling for the studio off of Paul's plate. Laura is showing herself to be a true team player. We know you will enjoy talking to her, as she is the friendly voice who answers when you call. Laura is a great addition to our team and we are looking forward to many great things from her.



I feel like I can't begin to get through all of the highlights of the past few months! There has been the development of a new line of urns, hand-painted portrait and landscape plaques, and Reserve Editions, some of which you can read more about on the following pages. However, I can't miss this opportunity to thank Kristin Cramer for her 15 years of service in helping our artists achieve their career goals. Usually the artists get all the glory, but it takes unselfish people like Kristin to put that work in the spotlight and seamlessly bring the artists together with people who love their work. Thank you so much for all you do, Kristin! We hope you enjoy the catalog Kristin has put together for you.

Thank you all once again for your support of our studio. As an artist and small business owner, I am honored that you see the value in the work we do. We are committed to working hard to uphold the craftsmanship and ideals so treasured by Arts and Crafts enthusiasts.

With appreciation,

Kevin Hicks
President, Founder, Potter



What you see in this catalog is only the tip of the iceberg! If you like what you see here, we invite you to browse our web store. There are many more beautiful pieces available at ephraimpottery.com.

This piece represents a new direction in our work. Kevin was experimenting with new forms and hit upon this modified flask shape. While not necessarily a traditional Arts and Crafts form, adding the architectural pattern and the dragonfly created a cohesive and dynamic piece. The slim body of the dragonfly echoes the lines of the sculpting and the cut-outs and feels at home on the form. The piece is glazed in a rich, earthy faience with tones of brown and olive. The dragonfly is accented with copper lustre, simultaneously highlighting and uniting it with the brown tones in the glaze.

Mission Dragonfly

11 1/4" x 4 3/4"

G22 \$278

Color as shown



Important Information About Our Pottery

OUR POTTERY IS NOT WATER-TIGHT. We do not recommend putting water directly in our vases. If you wish to display live flowers, we suggest using a protective floral liner (a glass or plastic cup works fine) and a drip pan in order to protect the life of your piece and your furniture from water damage.

As with any other work of art, exposure to extremes in temperature is not recommended. Art pottery should be dusted with a dry, soft cloth. Although there is no lead in any of our glazes, we do not consider our art pottery to be food safe.



Ginkgo Branch
left: CN; right: DO

Pin Oak Branch
left: LG
right: OS



Pine Branch
left: AW; center: DO;
right: CM



These pieces, with their arboreal motifs and earthy colors, have a timeless appeal. The design wraps around the top to form the rim, while branches rise above to create a very sculptural piece. The twining sculpted design combined with our flowing, blended glazes, means each of these pieces is truly an original work of art.

Ginkgo Branch

4¼" x 6⅜"

G28 \$228

Colors: CN, DO

Pin Oak Branch

4¾" x 6⅜"

G29 \$228

Colors: LG, OS

Pine Branch

4½" x 6⅜"

G30 \$228

Colors: AW, CM, DO

Employee Spotlight:

Jennifer Grelk

Jennifer joined Ephraim Pottery in May 2010 as a journeyman glazer. In her three years with us, she has become an integral part of the glazing department. Since John Raymond switched over to woodworking full time earlier in the year, Jennifer's role in glazing has become even more prominent. She has also started designing tile: the Tree of Life, Blooming Rose, and Meadow Dragonfly (page 19) are her designs. As if Jennifer isn't busy enough, she also works part-time in our Lake Mills gallery. We are fortunate to have Jennifer on our team and we look forward to more great things from her in the future.



Why did you choose your career in pottery?

I was very fortunate to have this career choose me, in that I never thought working in ceramics would be a feasible career path. But I was given the opportunity and am working hard to grow my knowledge and skills in ceramics to better ensure a successful future in this field.

What attracted you to Arts and Crafts?

When I first began, I was unfamiliar with the Arts and Crafts style. Now that I have been exposed to it and learned more about it, I enjoy its simple elegance and craftsmanship. There is a strong connection to the effort, skill, and dedication of each artisan who creates something. Knowing that makes each piece unique and special.

What do you love most about pottery?

I love the connection pottery has to the earth. By using clays, soils, and minerals a potter is able to make something, whether functional or artful. There is something satisfying about getting your hands dirty to make something wonderful.



These charming pieces bring the posies out of your pocket and into view. Pretty white flowers with pale yellow centers rest gently around the rims. Our new Pink Peony faience glaze provides a delicate backdrop and imbues these pieces with a tender sweetness.

Pretty Posies Vase

6¼" x 3½"

G23 \$138

Color: PI

Pretty Posies Bowl

3¾" x 5½"

G24 \$148

Color: PI

Now available in Pink Peony

Nodding Lily

4½" x 3¾"

C03 \$108

Color: PI





This well-proportioned vase, with its architectural styling and symmetrical geometric pattern, would look at home in any Prairie-style interior. Available in three colors, including our new Aquamarine.

Prairie Home

4¼" x 4¼"

G27 \$128

Colors: AG, AQ, SY

Marks Emphasize Collaboration

Ephraim Faience Pottery impresses a studio mark onto the foot of each piece before it is fired. New studio marks are introduced at the beginning of each year. This helps collectors authenticate the piece and determine when it was made. We are proud of the collaborative nature of our work as well as the talents of our individual artists. Each piece is also marked with the initials of the potter, the sculptor, and the glazer. You can read short bios of our artists and learn more about our marks on ephraimpottery.com.



This example bears the studio mark for 2013, the potter's mark of Paul McVicker, the sculptor's mark of Laura Klein, and the glazer's mark of Jennifer Grelk.



The phalaenopsis orchid is popular among orchid enthusiasts. A numerous genus with more than 60 species, its common name is moth orchid because the flower of some varieties is said to resemble a moth in flight. Whether or not you think this is true, it is a uniquely beautiful flower.

Moth Orchid

12½" x 4¾"

G21 \$268

Colors: CR, LG, SY

Lidded Pieces & Urns

In response to an increasing number of customer requests, we have created a line of lidded pieces and urns with a variety of inspirational motifs. The Cherry Blossom and Ginkgo pieces can be ordered with an optional insert to hold a candle or small treasure. We also entertain requests for custom urns. Please email us or call to inquire.



Cherry Blossom Urn

10½" x 5½"

U01 \$350

Color as shown



Cherry Blossom Urn with insert

10½" x 5½"

U01-g \$380

Color as shown



Ginkgo Urn

12½" X 6¾"

U02 \$350

Color as shown

Ginkgo Urn with insert (not shown)

12½" X 6¾"

U02-g \$380

Color as shown

Stalwart Oak Urn

11½" x 6"

U04 \$350

Color as shown



Springtime Iris Urn

10½" x 5½"

U05 \$350

Color as shown



Dancing Dragonflies Urn

11½" x 5¼"

U03 \$350

Color as shown



(Please see ephraimpottery.com for additional photos of these pieces.)

Employee Spotlight:

Kristin Cramer

Kristin joined our studio in 1998 as Ephraim's first full-time employee. Her strong organizational skills transformed the pottery's rudimentary office into a fully functional operation. Over the years, as the pottery has grown and changed, Kristin's roles have expanded. She wears many hats at Ephraim, including marketing, human resources, web development, and photography. She has even been known to design tile! Kristin's dedication and versatility has been integral to Ephraim's success. Thank you, Kristin, for a great 15 years!



When did you become interested in pottery?

I became interested in pottery while I was an undergrad at UW Milwaukee.

I wanted to take art classes but the intro classes were always full, so I started taking non-credit classes in hand-built ceramics at the UWM Craft Center. I loved the feel and the smell of the clay and the expressive outlet it provided.

What is the most challenging thing about your work?

Keeping all the balls in the air and being able to shift gears on a dime. There are so many different aspects to running a small business and there are always many things going on at once. Combine that with the continuous changes to technology, and most goals become moving targets.

Do you have a favorite piece of Ephraim? What is it and why is it your favorite?

Yes. It is a miniature Boston Fern Vase that Kevin made for me on my first anniversary with Ephraim Pottery. I will always treasure it because of the meaning behind it.



This little acorn does double duty as both a sculptural and functional piece. The cap of the acorn is a removable lid, allowing you to store your treasures inside. Not food safe.

Lidded Acorn

4½" x 3¾"

G26 \$108

Color as shown



One of our neighbors near the studio has a large trumpet vine that explodes in a profusion of flowers every summer. Several of us enjoy its bright orange blossoms every day on our way to and from the studio. Two glaze options—Chestnut Green and Aquamarine—give this versatile piece two very different looks.

Trumpet Vine

12¼" x 4¾"

G20 \$298

Colors: AQ, CN



Viewed from the top, the three lobes of this attractive little Grueby-style piece form a trefoil. Three lobes, three leaves, and three flowers each with three petals—it's an Arts and Crafts trifecta!

Trefoil

4¼" x 4¼"

G25 \$148

Colors: AL, ASG, CR



Now available in Antique Sea Green

Wild Tulip

4¼" x 3¾"

G02 \$118

Color: ASG

Ephraim's Woodshop Carries on Tradition of Quality Hand-Craftsmanship

Ephraim Pottery has worked hard since its founding in 1996 to build a reputation for creating the finest quality handmade art pottery and tile. When we introduced our new line of tiles in January 2012, we knew that any frames we would offer to our customers had to match the quality and craftsmanship of our ceramics. John Raymond, who joined Ephraim in 2001 to head up our glazing department, is also an experienced woodworker with a passion for the Arts and Crafts style. It had long been a dream of John's to put his woodworking skills to use at Ephraim. With his attention to detail and unflinchingly high standards, we knew he'd be up for the challenge. We are confident that every frame that leaves our studio will meet or exceed our customers' expectations.

John has done extensive research on the methods used by the furniture makers and woodworkers of the Arts and Crafts era. He had been experimenting with different techniques and processes even before moving into woodworking full-time this past February. John makes Ephraim's frames in very much the same way that woodworkers did in the early 20th century. There are more than two dozen steps involved in the making of a single frame. "Some of the steps could be eliminated or simplified," explains John, "but in doing so I feel that the quality would not be in keeping with the Arts and Crafts tradition."

John begins by carefully selecting the wood for each frame. He pays special attention to the direction of the grain and the character of the wood, incorporating as many medullary rays—those silver-like flecks or flakes found in quarter-sawn grain—as possible. Then comes the intricate process of cutting, planing, and sanding. The joints are mortise-and-tenon; pegs add extra stability and aesthetic appeal. No metal hardware is



Frames are made with mortise-and-tenon joints; no metal hardware is used to join the sides.

used to secure the joints. Our logo is burned into the back of each frame as a permanent identifier. The multi-step finishing process incorporates fuming, staining, shellacking and waxing. The result is a Mission-style frame of the highest quality. Paired with one of our tiles, the finished piece is a work of art that truly evokes the Arts and Crafts movement which inspired it.

Important Information About Our Frames

Each frame is crafted individually by hand. The frames pictured in this catalog and on ephraimpottery.com are examples to be used for reference only. Your frame will not look exactly like any of these because wood grain varies in appearance and in its ability to darken during fuming and to take the color of the stain. There is a keyhole slot cut into the back for ease of hanging. Turnbuttons fastened with screws secure the tile in the frame, making it easy to remove and replace the tile.

The measurements shown are the outside dimensions of the frame. Our frames are made



Frames are sanded in multiple steps to a buttery-smooth finish.

specifically to fit Ephraim Pottery tiles and may not fit tiles of similar dimensions from other makers. Since our tiles are created and trimmed by hand, we can only guarantee that our tile will fit in one of our frames if the tile and frame are ordered at the same time. If you would like to order a frame for a previously purchased tile, please measure all four sides plus the depth of your tile and use the measurements below to determine if your tile will fit in one of our standard-size frames. Please note that if your tile is significantly out of square, it may not fit despite its dimensions.

Frame size

Frame for 5"x5" tile

Frames for 5"x7" or 7"x5" tiles

Frame for 8"x4" tile

Interior measurement of tile opening

5 $\frac{3}{16}$ " x 5 $\frac{3}{16}$ " x $\frac{9}{16}$ " deep

5 $\frac{3}{16}$ " x 7 $\frac{3}{16}$ " x $\frac{9}{16}$ " deep

4 $\frac{3}{16}$ " x 8 $\frac{3}{16}$ " x $\frac{9}{16}$ " deep

If your tile will not fit in one of our standard frames, we can customize the size of the frame for you if the measurements of your Ephraim tile are within 1/4" of the dimensions listed above. There will be an additional charge of \$20 to customize the size of the frame. You will need to ship the tile to us. Please call our office at 1-888-704-POTS or email ephraim.office@gmail.com for further instructions.



John "Woodchuck" Raymond loads unfinished frames into a custom-made airtight fuming container. Fuming darkens the wood before the stain is applied.

Check out our new tile stands available on our online store.

Frame for 5" x 5" tile

10 $\frac{5}{8}$ "h x 10 $\frac{5}{8}$ "w*
ES5x5 \$110

Frame for 5" x 7" (horiz) tile

10 $\frac{5}{8}$ "h x 12 $\frac{5}{8}$ "w*
ES5x7 \$120

Frame for 7" x 5" (vertical) tile

12 $\frac{5}{8}$ "h x 10 $\frac{5}{8}$ "w*
ES7x5 \$120

Frame for 8" x 4" (vertical) tile

13 $\frac{3}{8}$ "h x 9 $\frac{5}{8}$ "w*
ES8x4 \$120

* Frame dimensions are exterior dimensions

New Colors!



Sunny Afternoon Tile

5"h x 7"w

F79 \$100

Color: LM

Frame for 5" x 7" (horiz) tile

10 $\frac{5}{8}$ "h x 12 $\frac{5}{8}$ "w

ES5x7 \$120



Long Shadows Tile

5"h x 5"w

G68 \$85

Color: AT



Old Sage Tile

5"h x 5"w

G65 \$55

Color: OC



Autumn Path Tile

7"h x 5"w

G67 \$100

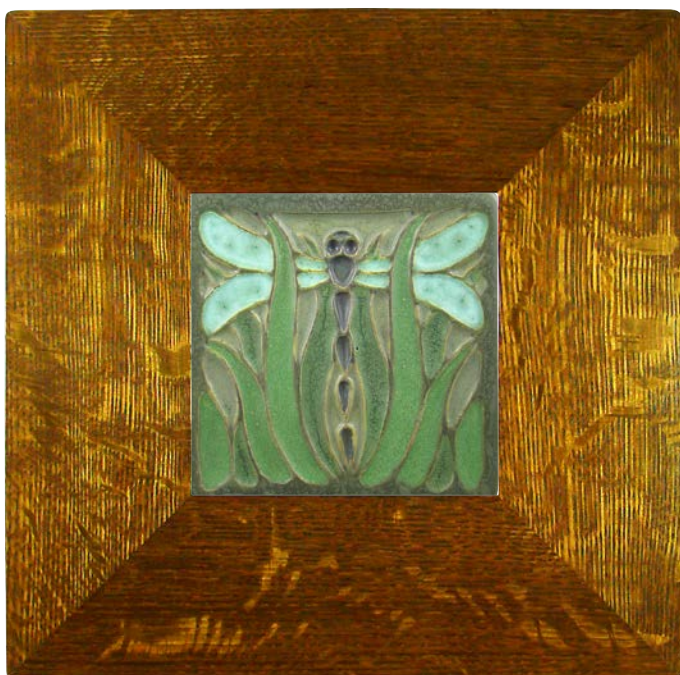
Color: LM



SY



IN



CN

A dragonfly rises from a grassy meadow in this design-oriented tile. The flowing blades of grass create a sense of movement, while the brightly colored raised sections recall stained glass. Available in your choice of three colorways, each with a natural, organic feel.

Meadow Dragonfly Tile

5" h x 5" w

G70 \$58

Colors: CN, IN, SY

Frame for 5" x 5" tile

10 $\frac{3}{8}$ " h x 10 $\frac{3}{8}$ " w

ES5x5 \$110



Red-winged blackbirds are among the first birds to return to our northern climate in the spring. They frequent the marshes and roadsides, staking out their territories with loud, trilling calls. This tile is glazed in our Glossy Amber over colored underglazes. Please note that the intensity of the color of the underglazes can vary. The tile you receive may be slightly lighter or darker than the example pictured.

Red-winged Blackbird Tile

8" h x 4" w

G75 \$78

Color: GAM

Frame for 8" x 4" (vertical) tile

13 5/8" h x

9 5/8" w

ES8x4 \$120

Wisconsin Gallery Expands

Ephraim Pottery calls Lake Mills, Wisconsin, home. On July 1, our gallery moved 2 blocks east to a larger space across from Commons Park. The gallery still showcases pieces from Ephraim's collection of art pottery, art tiles, unusual and experimental pieces, and the ever-popular seconds and irregulars (25-50% off retail). The additional space allows us to showcase even more of our work, including our new quarter-sawn oak frames and tile stands (see p. 15-17), as well as an expanded selection of Archive Edition textiles and more William Morris lamps.

Ephraim Pottery Gallery

130 E. Lake St.

Lake Mills, WI 53551

gALLERY@ephraimpottery.com

Tel. 920-648-3534

See ephraimpottery.com/buying-our-pottery for hours.



The Footbridge
Tile in AT



Below left: The
Commons Tile
in AT
Center: The
Footbridge Tile
in LM
Right: The
Commons Tile
in LM



These tiles were inspired by scenes in our hometown of Lake Mills. The Footbridge depicts the bridge over the inlet to Rock Lake that is much beloved by residents. Children fish and people watch sunsets from it, and couples have their wedding photos taken on it. The Commons was inspired by the view from the front window of our new gallery. The jewel-like park in the center of town has the feel of an old-fashioned town commons, with its century-old trees, vintage light posts, and surrounding historic buildings. Our beautiful little town has much to inspire us!

The Footbridge Tile

7" h x 5" w

G73 \$85

Colors: AT, LM

The Commons Tile

7" h x 5" w

G74 \$85

Colors: AT, LM

Frame for 7" x 5" (vertical) tile

12 $\frac{5}{8}$ " h x 10 $\frac{5}{8}$ " w

ES7x5 \$120



This tile was inspired by Leah's recent trips to California and New York. This iconic bridge just outside Big Sur spans steep mountains overlooking the Pacific Ocean. The sky was inspired by the painted ceiling in Grand Central Station, with its depiction of the constellations in the night sky painted in bright aqua and warm yellow. If you carefully connect the dots, you can see both the Big and Little Dippers.

Bixby Creek Bridge Tile

7" h x 5" w

G72 \$65

Color as shown

Frame for 7" x 5" (vertical) tile

12 $\frac{5}{8}$ " h x 10 $\frac{5}{8}$ " w

ES7x5 \$120

Ephraim West Offers Great Selection

Ephraim Pottery West is located in Cambria, California, a popular destination along scenic coastal Highway 1 halfway between San Francisco and Los Angeles. Located in Cambria's charming West Village, Ephraim Pottery West carries our full line of pottery and tile, including experimental pieces (as available). A carefully chosen selection of work by other artists and craftspeople is also available, including furniture by Voorhees Craftsman, textiles by Archive Edition, and lamps by William Morris. If you are in the area, we hope you will stop in Cambria and pay us a visit!

Ephraim Pottery West

728 Main Street

Cambria, CA 93428

epwest@ephraimpottery.com

Tel. 805-924-1275

See ephraimpottery.com/our-cambria-gallery for hours.





AG

With the expansion of our antique glaze palette, we were eager to attempt to recreate a tile by the historic Grueby Faience Company. The well-known tulip design, with its clean lines and symmetrical composition, proved perfect for this challenge. This tile is offered in our new Antique Sea Green in addition to our classic Antique Green.



ASG

Heirloom Tulip Tile

5" h x 5" w

G71 \$58

Colors: AG, ASG

Frame for 5" x 5" tile

10 $\frac{5}{8}$ " h x 10 $\frac{5}{8}$ " w

ES5x5 \$110

Maker's Hand Visible in Ephraim Tiles



Our art tiles are made by hand, making each slightly different and uniquely beautiful. Handmade art tiles have a looseness and spontaneity that commercially manufactured tiles found at big-box hardware stores and tile retailers do not. The hand of the maker is visible on each tile we create. We now offer quarter-sawn oak frames and stands for our tiles (see p. 15–17).

Unique qualities of handmade tile

- Each tile is pressed and trimmed by hand. This means that the thickness and dimensions will vary more than is typical with commercial tile.
- Each tile is glazed by hand. Glazing tiles is not a simple “paint-by-number” exercise. No two tiles will look exactly the same, and no tile will look exactly like the example pictured in this catalog and on our website.

Installation information

Ephraim Pottery tiles are porous. They are not suitable for wet areas such as tub surrounds. If our tile is going to be installed, we recommend sealing the glazed surface completely prior to grouting. This can be done by completely covering the front surface of the tile with masking tape. If a sealer is preferred, we recommend consulting a professional tile installer in your local area for advice on what would be the best product to use for your project. The Handmade Tile Association is also a good resource and can be found online at www.handmadetileassociation.org.

"Persephone is the crown jewel in your collection!"



Persephone is the Queen of the Underworld in Greek mythology. Together with her mother, Demeter, goddess of the harvest, she controls the cycle of the seasons.

Persephone's Lament

8" h x 4" w

G60 \$78

Colors: Black, Red

**Frame for 8" x 4"
(vertical) tile**

13 $\frac{5}{8}$ " h x 9 $\frac{5}{8}$ " w

ES8x4 \$120

"This new line of tiles is magnificent, none more than Persephone. She is simply stunning. The online photos and the catalog don't do her justice. The tile looks like it's liquid. I ordered the tile in both colors [black and red], and after a couple of weeks I still catch my breath every time I pass them. I sincerely love the work of the studio, and Persephone is the crown jewel in your collection!"

—Bennett Law, Vermont

Custom Portraits Preserve Memories

Now you can celebrate the special people in your life in a uniquely beautiful, affordable, and lasting way. Ephraim artist Leah Purisch creates charming one-of-a-kind custom portraits in warm amber tones. By marrying traditional painting techniques with ceramic materials, she is able to achieve a uniquely luminous portrait that captures the individual subject in a truly lasting art form. Our quarter-sawn oak frames perfectly complement the amber tones in the portrait. Like the Rookwood portrait



vases that inspired them, the finished piece is an heirloom that will be treasured for generations.

Portraits are painted from photographs with specific lighting requirements. Completed portraits generally range from \$450–\$550, including framing. Portrait plaques are not sold unframed. A down payment of \$100 is required to begin work on your portrait.

For more information or to commission a custom portrait, please email ephraim.portraits@gmail.com.

Ordering from Ephraim Pottery

This section contains important information about our ordering and return policies. If you have any questions, please call us at 888-704-POTS.

Delivery Time

The pieces shown in this catalog usually ship within two weeks (10 business days). For pieces shown only in our online store, the approximate order fulfillment time is shown for each collection. Please call our office if you have any questions about lead times.

Return Policy

Because each item is made by hand, no two pieces are exactly alike. The piece you receive will differ slightly in color, size and decoration from the example pictured. These variations are natural parts of the pottery-making process and should be expected. We carefully inspect each piece for defects, such as chips, cracks or glaze misses, before it leaves our studio.

We guarantee that all items shipped will be first-quality, non-defective and substantially the same as the example pictured. Your satisfaction is very important to us. If you are unhappy with your purchase in any way, please call us within 30 days of receipt of your order. We will work with you to find a mutually agreeable solution to your concern. Shipping and handling charges are only refundable in cases where we made an error. If there is a problem with your shipment, please save all packing materials and call our office within 1 week of receipt.

Shipping to Addresses in the Continental United States

Orders are shipped either by USPS Priority Mail or UPS Ground Service. Shipping and handling charges are calculated based on the total cost of your order. The chart below lists our shipping charges. Additional charges apply for overnight, 2-day, or 3-day shipment.

Note: Orders of any amount going to APO/FPO addresses are shipped via the US Postal Service, insured Priority Mail.

If your order totals: Add:

\$26-\$79	\$7.50
\$80-\$100	\$15.00
\$101-\$200 . . .	\$20.00
\$201-\$350 . . .	\$25.00
\$351-\$500 . . .	\$30.00

If your order totals: Add:

\$501-\$750 . . .	\$35.00
\$751-\$1,000 . .	\$40.00
\$1,001-\$1,250	\$45.00
\$1,251-\$1,500	\$50.00
\$1,501 and over	FREE

See ephraimpottery.com or call for shipping charges for orders to Canada. For shipping to Alaska or Hawaii, please call.

Dragonflies now available in Cranberry

Dragonfly Trio

6½" x 4¼"

E06 \$178

Color: CR

Darner Redux

10" x 3½"

F11 \$228

Color: CR

Evening Dragonfly

11¾" x 4½"

G06 \$228

Color: CR



Ready to make a purchase?

For your convenience, we offer several ways to purchase our pottery and tile.

1. Order online at ephraimpottery.com. Our online store is open 24/7. You will receive an email confirmation of your order with an approximate ship date.
2. Call us toll-free at 1-888-704-POTS (7687). We will be glad to assist you personally from 9:00 a.m. to 5:00 p.m. CT Monday through Friday. After hours, you may leave a voice mail message and we will get back to you.
3. Shop our galleries in Wisconsin (see p. 20) or California (see p. 22).
4. Mail your order to the address shown below. Be sure to add the correct shipping and handling fee. Please see the chart on page 27 for rates.
5. Shop at one of the shows we do throughout the year. Please see the Events Calendar on ephraimpottery.com for current listings.

If you have any questions, please call 1-888-704-POTS (7687) or email ephraim.office@gmail.com. We will be happy to help you.



Ephraim Faience Pottery
203 W. Lake St., Lake Mills, WI 53551
www.ephraimpottery.com
1-888-704-POTS (7687)

All photos of pottery and staff, pottery designs and text ©2014
by Ephraim Faience Pottery Inc.

Prices shown are subject to change without notice. Pieces shown in this catalog and/or on www.ephraimpottery.com may be discontinued at any time without notice.