

EPHRAIM POTTERY



Studio Collection 2014



Greetings!

Welcome to our 21st catalog! Although there have been many wonderful moments to reflect on since our founding in 1996, in many ways I feel like our story is just beginning.

It has been exciting to watch the evolution of our pottery over the past year and see our artists and staff growing into new roles. While John Raymond has been hard at work developing our woodshop, Laura Taylor has been growing into her role in the office and getting to know customers. In the clay studio, the biggest change has been on the technical side, with Paul McVicker now focusing most of his attention on glaze development.

Customers often ask us where we get our glazes. Most potters use commercially manufactured glazes because the science of glaze making can be quite complicated. I've always felt that it's important for us to develop our own glaze formulas instead of using commercial formulas or those created by other potters. We combine raw materials like silica, feldspar, dry clays, and colored oxides to come up with glaze recipes. The combinations are endless and it takes an enormous amount of time, effort, and materials testing to perfect a glaze formula. Each formula test has to be fired up to 2000° F and then cooled in order to see the results. Adjustments are made and the new formula is again made and fired. This process is repeated until we get the results we are looking for. Then, just when things are going along smoothly, the mining operation for one of our critical raw materials shuts down and it's back to the drawing board. The chemical formula will never be exactly the same again, but we reformulate and test and retest until we have recreated the same look.

I now feel that we have reached the point in the development of our studio where our scientific glaze-making abilities equal our artistic pottery-designing abilities. While making our own glazes is difficult and time-consuming, knowing them down to their scientific atomic level is much more gratifying to us. This way we know—and you can be assured—that there is no other art pottery just like ours!

I hope this gives you a little more insight into how we craft the colors that make our pottery come alive. Please take a look through these pages and see what our collective has been working on over the past year. We hope you find much to delight and inspire you.

With appreciation,

Kevin Hicks
President, Founder, Potter

Moonlight Over Lone Pine Gorge Vase

"Every now and then, a subtle pot stands out over time to become a favorite. Back in 2007, there were two shapes under consideration with a bridge, pine, and gorge motif. One became The Lone Pine Gorge Vase and the other made it into my home. It has been on my mantel ever since and became one of my most cherished pieces. We are introducing this piece because I always felt it should someday be offered to the public. I love the depth of field achieved despite the low relief, looking out from behind a bridge in a quiet place protected by the mountain bluffs, out on to a vast, unknown world." —Kevin Hicks

#H16 Moonlight Over Lone Pine Gorge Vase

Approx. 12½" h x 4½" w
\$298

Kale (KA)



Dancing Dragonflies Bowl

The idea for this piece grew out of other dragonfly-themed pieces we've made, including the now-retired Dancing Dragonflies vases, which were long-time customer favorites. Viewed from above, the entire pattern is displayed on this closed-bowl form, making it a great accent piece for a side table or nightstand.

#H25 Dancing Dragonflies Bowl

Approx. 3½" h x 5½" w
\$198

Teal (TL)



Algae (AL)





Craftsman Rose Jar

The Craftsman Rose is a classic motif that never goes out of style. Here it appears framed in a windowpane pattern that accents its square shape. The full, round belly of the bowl provides a contrasting softness that is echoed in the handle of the jar's lid. This piece can store special treasures or be used as a small urn. Holds approximately 1½ cups dry volume. (Not food safe.)

#H06 Craftsman Rose Jar

Approx. 4¾" h x 4¾" w

\$158



Cranberry (CR)

Curdled Teal (CT)

Algae (AL)



Athena Vase

The Athena Vase reinterprets of one of our early pieces, the Greek Vase, on a smaller scale. A traditional Arts and Crafts leaf, bud, and teardrop motif circles around a timeless classical form, creating a pleasing symmetry. This piece is named for Athena, Greek goddess of inspiration and the arts.

#H19 Athena Vase

Approx. 7¾" h x 3½" w

\$208



Curdled Teal (CT)

Algae (AL)

Autumn Reflections (AR)

Calla Lily Bud Vase

The Calla Lily, with its clean, gently curved lines, is wonderfully perfect in and of itself. Here, this symbol of purity, love, and transition bends gracefully across the vessel, gently going with the flow and celebrating life.

#H04 Calla Lily Bud Vase

Approx. 7" h x 3½" w

\$148



Reserve Editions

Every two to three months, we create a special numbered piece that is only available to order for a limited time. Reserve Editions, as they're called, are announced by email and on our Facebook page. The number of orders received determines the size of the edition, with a limited number going to our Wisconsin (p. 19) and California (p. 13) galleries. Each piece is created completely by hand and has its own unique characteristics. If you are interested in being notified when new Reserve Editions become available, please go to ephraimpottery.com and sign up for our email list or like our official page, Ephraim Faience Pottery Studio & Gallery, on Facebook.

Pictured: The Reserve Edition Hollyhock Vase, retired on June 10, 2014, with a total of 63 numbered pieces in the edition. This piece was created with the input of our Facebook fans in our first-ever Fan-Built Piece experience. (This piece is retired and is not available for order.)





Bungalow Pine Jar

This piece was inspired by our Bungalow Pine Vase. A customer favorite since it was introduced in 2011, this is another piece where nature and the straight lines of Craftsman-style architecture combine into a unified whole. It is topped by a perfectly proportioned lid that echoes the form of the vessel it rests on.

This piece can store special treasures or be used as an urn. Holds approximately 3½ cups dry volume. (Not food safe.)

#H15 Bungalow Pine Jar

Approx. 7" h x 4½" w

\$248



Out For A Ride Tile

There is a strong cycling culture in Wisconsin, and this idealized landscape highlights the natural beauty that makes biking so popular in our home state. Our well-utilized bike trails and rural roads take riders past fields, woods, lakes, and rivers, making for pleasant rides for amateurs and serious enthusiasts alike.

#H66 Tile: Out For A Ride

7" h x 5" w

\$85

ES7x5 Frame

for 7" h x 5" w

vertical tiles

\$125

Chestnut
(CN)



Mountain Sunset Vase

This piece was inspired by the Post-Impressionistic European landscape paintings of Van Gogh, Gauguin, and Cezanne. The body of the vase creates a frame for windows that look out onto a landscape of cypress trees silhouetted against the mountains as the sun sets. Despite its small, humble shape, this piece has an entrancing, jewel-like quality.

#H10 Mountain Sunset Vase

Approx. 4" h x 2¾" w

\$148



Avocado (AV)



Unique Qualities of Ephraim Art Tile

Our art tiles are made by hand, making each slightly different and uniquely beautiful. Handmade art tiles have a looseness and spontaneity not found in commercially manufactured tiles. Each tile is pressed, trimmed, and glazed by hand, imbuing it with its own delightful characteristics.

Each of our tiles has a notch in the back, allowing it to be hung on a nail or flat-head screw. Our woodshop, Ephraim Studios, creates oak frames and stands designed to complement our tiles, offering you more easy and beautiful options for display (see p. 14-15).

Important Information About Our Tiles

Ephraim Pottery tiles are porous. They are not suitable for wet areas such as tub surrounds. If our tile is going to be installed, we recommend sealing the glazed surface completely prior to grouting. Helpful information on using handmade tile in installations can be found at www.HandmadeTileAssociation.org.





Resting Dragonfly Vase

Often dragonflies go unnoticed, sitting in stillness, blending into nature and the worlds we build. Here, an architecture-inspired design framework provides a momentary resting place for a dragonfly on its journey to the wider world beyond.

#H05 Resting Dragonfly Vase

Approx. 8¾" h x 3¾" w

\$218



Dusky Olive (DO)

Curdled Teal (CT)



Bungalow Crow Vase

The idea for this piece came about as a result of the Fan-Built Piece experience that we held on Facebook in the spring of 2014. The form that was chosen for the Reserve Edition Hollyhock Vase here lends itself to an architectural interpretation. This piece has a strong, solid feel and clean lines. The natural world makes an appearance in the form of our favorite inquisitive bird and the earthy tones of the glaze.

#H24 Bungalow Crow Vase

Approx. 10¾" h x 4" w

\$298



Dusky Olive (DO)

Employee Spotlight: Paul McVicker

Paul McVicker has been throwing pots since he was 13 years old, when his older brother got a kick-wheel and set it up in the backyard of their California home. His brother taught the young Paul to throw, and he was hooked. Paul started ceramics classes as soon as he entered high school and continued through graduation. After a semester at college, Paul was offered a full-time job as a potter. He took it and never looked back. That was 1977. Prior to joining EFP in May 2005, Paul worked for production potteries in California and Wisconsin.

Paul is a multi-talented artist with skills in throwing, sculpting, glazing, and glaze chemistry. When John Raymond transitioned out of the lab to start the woodshop, Paul's interest in glaze chemistry made him the perfect fit to take over that role. Paul thrives in the transitional zone where art and science coexist in perfect harmony. It is there that the magic of ceramics resides. Paul's passion and drive to understand the science behind the glazes is allowing us to grow in new and exciting artistic directions. We are so fortunate to have Paul working with us in our studio.



What was your childhood like?

I grew up in Sacramento, California, and lived in the Philippines for two years when I was 9 to 11 years of age. It was an amazing experience to live and be immersed in a much different culture. My dad was in the Peace Corps, it was 1967-1969, and we came back to a very different America. It is a time I will always be grateful for.

Before embarking on a career in ceramics, were you involved in other creative pursuits?

I was a drummer, taking lessons from the head percussionist of the Sacramento symphony, Stanley Lunetta. His approach was very disciplined and taught me to be persistent and work hard.

What inspires you?

I am inspired by the constant exploration of ideas and the hands-on effort to bring them to fruition. To collaboratively conceive an idea and work together to make it happen is highly rewarding.





Prairie Ginkgo Tile

Ever-popular ginkgo leaves are showcased in a geometric pattern reminiscent of a stained-glass window. The stylized design has a distinctly Prairie feel which is further enhanced by the earthy color palette.

#H61 Tile: Prairie Ginkgo

8"h x 4"w

\$85

ES8 Stand for

8"h x 4"w vertical

tiles

\$54



Pumpkin (PK)



Craftsman Ginkgo Bowl

Different Craftsman-inspired elements combine to form a harmonious whole on this attractive bowl. The top portion is inspired by Arts and Crafts style hammered copper and metalwork. The ginkgo-patterned medallions add color and interest. This piece is a great size and shape for displaying on a side table.

#H13 Craftsman Ginkgo Bowl

Approx. 3¼" h x 5¾" w

\$188



Chestnut (CN)

Portraiture

Ephraim Pottery is pleased to offer a unique custom portraiture service to our customers. Working from your reference photo, artist Leah Purisch hand-paints the portrait on a 7" x 5" ceramic plaque using underglazes. A glossy amber overglaze is then applied and the piece is fired, yielding a one-of-a-kind custom portrait on durable ceramic. Your portrait is finished in a frame of quarter-sawn white oak hand made by Ephraim artist John Raymond that perfectly complements the warm amber tones in the portrait. The finished piece is an heirloom that is designed to be treasured for generations.

With a down payment of only \$100, we can begin work on your custom portrait. Prices for completed portraits are \$450–\$500, depending on which style frame you choose. You can find more information and examples on our website, or contact us toll free at 1.888.704.POTS or by emailing ephrain.office@gmail.com for information and assistance.



Duality Tile

This design was inspired by the motif of an antique vase. Stylized ginkgo leaves frame a moth with wings outstretched. The moth, with its short life span and reckless attraction to the flame, represents the fleeting nature of existence. The ginkgo, on the other hand, is a symbol of strength and longevity. Together, they create a visual metaphor for the dual nature of the human experience.

#H65 Tile: Duality #ES5x7 Frame for 5'h x 7'w
5'h x 7'w horizontal tiles
\$85 \$125

Chestnut (CN)





Pacific Poppies Tile

Since we opened Ephraim Pottery West in 2012, we have gotten more familiar with the variety of California's natural beauty. Our California customers have been encouraging us to create a piece featuring their state flower, the California Poppy. Here, golden-edged orange poppies dot the shoreline along the Pacific coast.

#H63 Tile: Pacific Poppies #ES8x4 Frame for 8"h x 4"w
 8"h x 4"w vertical tiles
 \$85 \$125



Indigo (IN)



Leaf Green (LG)



Pacific Poppies Bud Vase

Golden-edged orange poppies of varying heights encircle the top of a vase glazed in aquamarine tones evoking the Pacific Ocean.

#H18 Pacific Poppies Bud Vase
 Approx. 7¼"h x 3¾"w
 \$148



Aqua (AQ)

Our California Gallery

Ephraim Pottery West is located in Cambria, California, a popular destination along scenic coastal Highway 1 halfway between San Francisco and Los Angeles. Located in Cambria's charming West Village, Ephraim Pottery West carries our full line of pottery and tile, including experimental pieces (as available). A carefully chosen selection of work by other artists and craftspeople is also available, including furniture by Voorhees Craftsman, textiles by Archive Edition, and lamps by William Morris. If you are in the area, we hope you will stop in Cambria and pay us a visit!

Ephraim Pottery West
728 Main Street
Cambria, CA 93428
epwest@ephraimpottery.com
Tel. 805-924-1275
See ephraimpottery.com for hours.

Like our new Ephraim Pottery West Facebook page!



DavidMSchrader.istockphoto.com



Frame for 5"x5" tiles (shown with #G70 Meadow Dragonfly tile in Cranberry, \$64, sold separately)

Ephraim Studios

We launched our woodshop, Ephraim Studios, in 2013 to create high-quality frames and stands to complement our line of art tiles. Ephraim artist John Raymond uses a process similar to that used by woodworkers in the early 20th century. No corners are cut when it comes to quality - there are more than two dozen steps involved in the making of a single frame. John begins by carefully selecting quarter-sawn oak for each frame, paying particular attention to the direction of the grain and the character of the wood. Then comes the intricate process of cutting, planing, and sanding. The joints are mortise-and-tenon; pegs add extra stability and aesthetic appeal. The multi-step finishing process incorporates fuming, staining, shellacking and waxing. Our logo is burned into the back of each frame as a permanent identifier. The result is an Arts and Crafts style frame of the highest quality. Similar care is taken in creating our tile stands from fine white oak.

With John's attention to detail and unflinchingly high standards, we are confident that every frame and stand created by Ephraim Studios will satisfy even the most demanding customer.

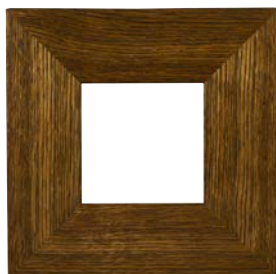
Examples of all sizes of our frames and stands can be viewed in our online store at ephraimpottery.com.



Back of frame for 8" x 4" vertical tiles



Frame for 8" x 4" vertical tiles (shown with #G60 Persephone tile in Red, \$82, sold separately)



#ES5x5 Frame for 5"x5" tiles
10½" h x 10½" w (exterior)
\$115



#ES5x7 Frame for 5"x7" horizontal tiles
10½" h x 12½" w (exterior)
\$125



#ES7x5 Frame for 7"x5" vertical tiles
12½" h x 10½" w (exterior)
\$125



#ES8x4 Frame for 8"x4" vertical tiles
13½" h x 9½" w (exterior)
\$125



#ES5 Stand for 5"x5" and 5" h x 7" w horizontal tiles
8" h x 5" w (assembled)
\$44

#ES7 Stand for 7" h x 5" w vertical tiles
 (shown on left with #G72 Bixby Creek Bridge tile, \$70, sold separately)
10" h x 5" w (assembled)
\$49

#ES8 Stand for 8" h x 4" w vertical tiles
11" h x 5" w (assembled)
\$54



Frames are made with mortise-and-tenon joints; no metal hardware is used to join the sides.



Frames are sanded in multiple steps to a buttery-smooth finish.



John "Woodchuck" Raymond loads unfinished frames into a custom-made airtight fuming container. Fuming darkens the wood before the stain is applied.



The Messenger Vase

In many traditional cultures around the world, the raven is viewed as a messenger, perhaps because this intelligent bird is gifted with the ability to mimic human speech. Here, a raven has wedged itself on a ledge under an eave as an eerie light shines from behind. The form is bold and heavy, contributing to the piece's dark, Gothic feel. Two different layers of lustre, which are applied and fired separately, further define the sculpted body of the raven.

#H14 The Messenger Vase

Approx. 7" h x 4¾" w

\$238



Olive (OL)



Acorn Vase

This clever vase showcases carefully sculpted oak leaves and acorns on an acorn-shaped form. The top of the form is stippled with a tool while the clay is still wet, creating an effect that mimics both the acorn's textured cap and hammered copper.

#H08 Acorn Vase

Approx. 6¼" h x 5¼" w

\$218



Pumpkin (PK)

Olive (OL)

Night Spirit Tile

The design for this tile was inspired by previous experimental tile and vase designs showing a bat silhouetted against the moon. Here, separate areas of complementary colors flow and merge to create a dynamic, unified design.

#H62 Tile: Night Spirit

5" h x 5" w

\$65

ES5 Stand for 5" x 5"

and 5" h x 7" w horizontal tiles

\$44

Pumpkin (PK)





Moonlight Cat Tile

The Moonlight Cat Tile and Jar were inspired by Marblehead Pottery's iconic "Stalking Panther" vase. In our version, a house cat sits on a cloud rise motif, backlit by the full moon. This design pays homage to the mysterious, primal, and spiritual qualities possessed by felines — characteristics that are well-known to their devoted human companions.

#H60 Tile: Moonlight Cat
8" h x 4" w
\$85

#ES8x4 Frame for
8" h x 4" w vertical tiles
\$125



Avocado (AV)



Moonlight Cat Jar

This piece can store special treasures or be used as a small urn. Holds approximately 1½ cups dry volume. (Not food safe.)

#H28 Moonlight Cat Jar
Approx. 4" h x 4¼" w
\$178



Avocado (AV)



Our Wisconsin Gallery

Lake Mills, Wisconsin, is home to Ephraim Pottery's studio, offices, and our original gallery. Our downtown gallery has become a destination for art pottery enthusiasts from around the country. The gallery showcases pieces from Ephraim's collection of art pottery, art tiles, and quarter-sawn oak frames, along with unusual pieces and experimental work. While our own work is the primary focus, the gallery also features a carefully chosen selection of furniture and accessories created by other artisans working in the Arts and Crafts style, including William Morris lamps and Archive Edition textiles. Bargain-hunters love the seconds and irregulars section, where pieces with minor flaws can be had for 25% to 50% off the retail price.

Ephraim Pottery Gallery

130 E. Lake St.

Lake Mills, WI 53551

gallery@ephraimpottery.com

Tel. 920-648-3534

See ephraimpottery.com for hours.



Bear's Dilemma Vase

A young black bear scampers up a tree only to face a dilemma. Does he dare test his weight on the treacherous-looking branch and try to cross to the other side? The tree limb stretches over the opening of the vase, completing the design on the back of this unique piece.

#H23 Bear's Dilemma Vase

Approx. 8¾" h x 4½" w

\$278



Curdled Teal (CT)





Sunrise Tile

A tree-studded coastline emerges from the shadows as the sun rises over a tranquil sea, framed by a backdrop of pastel-colored clouds. This design draws inspiration from Art Nouveau illustrations and Arts-and-Crafts style woodblock prints.

#H64 Tile: Sunrise

8" h x 4" w

\$85

#ES8x4 Frame for 8" h x 4" w

vertical tiles

\$125

Indigo (IN)



Leaf Green (LG)



Rock Lake Sunrise Vase

The Rock Lake Sunrise Vase offers a different interpretation of the framed landscape concept. Here, a misty, atmospheric landscape is juxtaposed with a straight, linear framework. Soft, velvety colors unite these two contrasting elements, creating a harmonious, peaceful scene.

#H11 Rock Lake Sunrise Vase

Approx. 7¼" h x 4¼" w

\$228



Pistachio (PS)

Graceful Iris Jar

Is there a flower more voluptuous and elegant than the iris? A white bearded iris blooms on the lid of this graceful piece, its petals dripping gentle pools of color where they come to rest. The rounded bowl perfectly complements the softly curving lines of the flower, evoking feelings of peace and serenity.

This piece can store special treasures or be used as a small urn. Holds approximately $1\frac{1}{4}$ cups dry volume. (Not food safe.)

#H09 Graceful Iris Jar

Approx. $5\frac{1}{2}$ "h x $5\frac{1}{4}$ "w

\$168



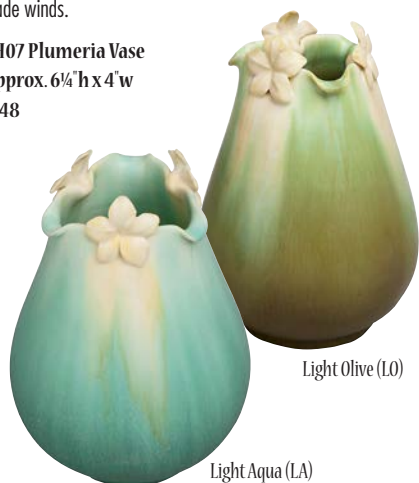
Plumeria Vase

This piece was inspired by a gorgeous plumeria tree at the bottom of the Diamond Head Trail on Oahu. The simple yet elegant form complements the clean lines of the plumeria blossoms, which rise above the top rim of the vase. They look so real that you can almost smell their intoxicating fragrance wafting along the gentle trade winds.

#H07 Plumeria Vase

Approx. $6\frac{1}{4}$ "h x 4"w

\$148





Artful Urns by Ephraim Pottery

Our artists have created lidded vessels in a range of sizes that can be used as urns for people or pets. Our newest pieces are shown in this catalog, but there are several more options shown online. You can view all of the available designs at www.ArtfulUrnsByEphraim.com, or call us toll free at 1.888.704.POTS. We are also happy to work with you to create a custom urn. Please call or email ephraim.office@gmail.com for more information.

Pictured: #U04 Stalwart Oak Urn

Approx. 11½" h x 6" w

Holds approx. 8 cups dry volume (not food safe)

\$368

More styles available at ephraimpottery.com.



Windy Day Vase

Three trees bend and twist in the strong wind, their canopies merging in a tangle of leaves at the top of this Art Nouveau inspired piece. Their skinny trunks pull away from the vessel at the neck, further underscoring the sense of movement. The exaggerated roundness of the lower part of the vase is reflected in the canopy of leaves at the top of this dynamic, stylized piece.

#H20 Windy Day Vase

Approx. 8¾" h x 4¼" w

\$238



Leaf
Green (LG)

Curdled
Teal (CT)

Craftsman Poppy Vase

Arts and Crafts style metalwork, architecture, and design provide the inspiration for this vase with timeless style. This tall piece possesses a subtle but commanding presence. The lighter color at the top enhances the hammered copper effect, while the classic orange poppy softens and brightens the piece.

#H27 Craftsman Poppy Vase

Approx. 11" h x 4 3/4" w

\$278



Olive (OL)



The Journey Lantern

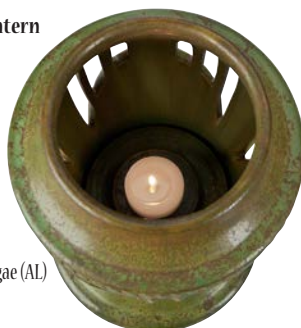
This bridge, which has no beginning and no end, reminds us that it's about the journey, not the destination. This unique piece exemplifies what can be achieved by pushing the limits of what can be done with clay. The pedestal of the base is hollow. It is topped by an insert that caps off the space inside the pedestal so that it can be used as an urn or to hide small treasures.* This same cap serves as a base for a pillar candle or tea light to illuminate the lantern. The cut-outs in the base and the lid allow light and heat to escape and enhance the arched design of the bridge.

* Interior portion of the pedestal base holds approximately 1 3/4 cups dry volume. (Not food safe.)

#H26 The Journey Lantern

Approx. 12 1/4" h x 9 1/2" w

\$550



Algae (AL)





Coneflower Vase

Coneflowers, also known by their scientific name *echinacea*, are native to North American prairies. Their beautiful, daisy-like flowers come in many colors, including the yellow and white variations available on this piece. Their prominent centers rise slightly above the rim, which is curved and folded in a way that complements the shape of the petals.

#H22 Coneflower Vase

Approx. 11 $\frac{3}{4}$ " h x 3 $\frac{3}{4}$ " w

\$278



Olive (OL)

Desert Sun (DS)



Songbirds Chamber Stick

This piece features songbirds and water, both of which are plentiful in Wisconsin. What could be more charming than candlelight flickering on a pair of birds perched on the edge of a pool of water? The Songbirds Chamber Stick features a thumb hold and accommodates a candle of approximately 1 inch in diameter.

#H17 Songbirds Chamber Stick

Approx. 1 $\frac{3}{4}$ " h x 4" w (opening 1" dia)

\$88



Teal (TL)

Leaf Green (LG)

Bullfrog Jar

The idea for this piece grew out of the 2013 Reserve Edition, "Froggy Went A Courtin'." A bullfrog sits on the lid and sings a chorus. He is partially hidden by lily pads, which encircle the piece and rise above the rim of the bowl. The frog's throat is a tiny pot that is thrown separately and then attached to his sculpted body. This uniquely charming piece can store special treasures or be used as an urn. Holds approximately 2½ cups dry volume. (Not food safe.)

#H21 Bullfrog Jar
Approx. 3¼" h x 6" w
\$258



Leaf Green (LG)



Marks

Ephraim Pottery marks the foot of each piece of pottery and the back of each tile to assure authenticity. New studio marks are introduced each year, allowing collectors to determine when the piece was made. We are proud of the collaborative nature of our work as well as the talents of our individual artists. In addition to the impressed studio mark, each piece is also marked with the impressed initials of the potter and the sculptor, as well as the fired-on initials of the glazer. You can read short bios of our artists and learn more about our marks on ephraimpottery.com.

Pictured: Large studio mark for 2014, the potter's mark of Ken Nekola, the sculptor's mark of Laura Klein, and the glazer's mark of Jennifer Grelk.



Unique Qualities of Hand-Made Ceramics

Each of our artists puts their head, hands, and heart into each piece they work on. Because each item is made by hand, no two pieces of the same design will look exactly alike. Minor variations in size, decoration, color, and finish are normal qualities of hand-made ceramics. Our goal is to create a high quality, aesthetically pleasing work of art for you that will bring a lifetime of beauty. Part of the joy and magic of hand-made ceramics is that the piece you receive will be a little bit different than the examples pictured in our catalog and on our website. If you have very particular tastes, we invite you to view our work in person at our Wisconsin (p. 19) or California (p.13) galleries or at any of the fine stores around the country that carry our work. A complete list of our authorized retailers can be found on ephraimpottery.com.

Important Information About Our Pottery

OUR POTTERY IS NOT WATER-TIGHT. We do not recommend putting water directly in our vases. If you wish to display live flowers, we suggest using a protective floral liner (a glass or plastic cup works fine) and a drip pan in order to protect the life of your piece and your furniture from water damage.

As with any other work of art, exposure to extremes in temperature is not recommended. Art pottery should be dusted with a dry, soft cloth. Although there is no lead in any of our glazes, we do not consider our art pottery to be food safe.



Ordering from Ephraim Pottery

You may place your order online at www.ephraimpottery.com 24 hours a day, 7 days a week. If you prefer to place your order by phone, please call our toll-free number, 1.888.704.POTS, from Monday through Friday between 9:00 a.m. and 5:00 p.m. Central.

Delivery Time

Most of the pieces shown in this catalog usually ship within 2 weeks (10 business days). The approximate order fulfillment time for each item is shown in the item description in our online store. Please contact us if you have any questions about delivery times.

Return Policy

We guarantee that all items shipped will be first-quality, non-defective and substantially the same as the example pictured. We carefully inspect each piece for chips, cracks and glaze misses before it leaves our studio. As hard as we try to get your order exactly right, we are human and sometimes we make mistakes. Your satisfaction is very important to us. If you are unhappy with your purchase in any way, please call us within 30 days of receipt of your order. We will work with you to find a mutually agreeable solution to your concern (return, replacement, or exchange). Shipping and handling charges are only refundable in cases where we made an error. If your order was damaged in shipment, please save all packing materials and contact us within one week of receipt.

Shipping Charges

THERE IS A FLAT FEE OF ONLY \$12.50 PER ORDER, NO MATTER HOW MANY PIECES YOU ORDER. This flat fee applies to orders shipped to addresses in the continental U.S. only. (includes APO/FPO). Your order will be shipped by either USPS Priority Mail or UPS Ground service, whichever is the most economical. Please provide a street address for shipping.

Please call or see ephraimpottery.com for shipping charges to Alaska, Hawaii, and Canada. We do not currently ship outside of North America.

Additional charges apply for overnight, 2-day, or 3-day shipment. Please call for information.

Sales Tax

Wisconsin state sales tax of 5.50% will be added to all orders shipping to addresses in Wisconsin.

California state sales tax of 7.50% will be added to all orders shipping to addresses in California.

Any other taxes or duties are the responsibility of the purchaser.

Customer Service

For personal assistance, please call toll free 1.888.704.POTS Monday and Friday between 9:00 a.m. and 5:00 p.m. central. Outside of office hours or if the line is busy, please leave a message and we will return your call. You may also contact us by email at ephraim.office@gmail.com.

More beautiful pieces available at ephraimpottery.com.

All photos of pottery and staff, pottery designs and text ©2014 by Ephraim Faience Pottery Inc.

Prices shown are subject to change without notice. Pieces shown in this catalog and/or on www.ephraimpottery.com may be discontinued at any time without notice.



Ephraim Pottery
203 W. Lake St.
Lake Mills, WI 53551

Here's your 2014 catalog!