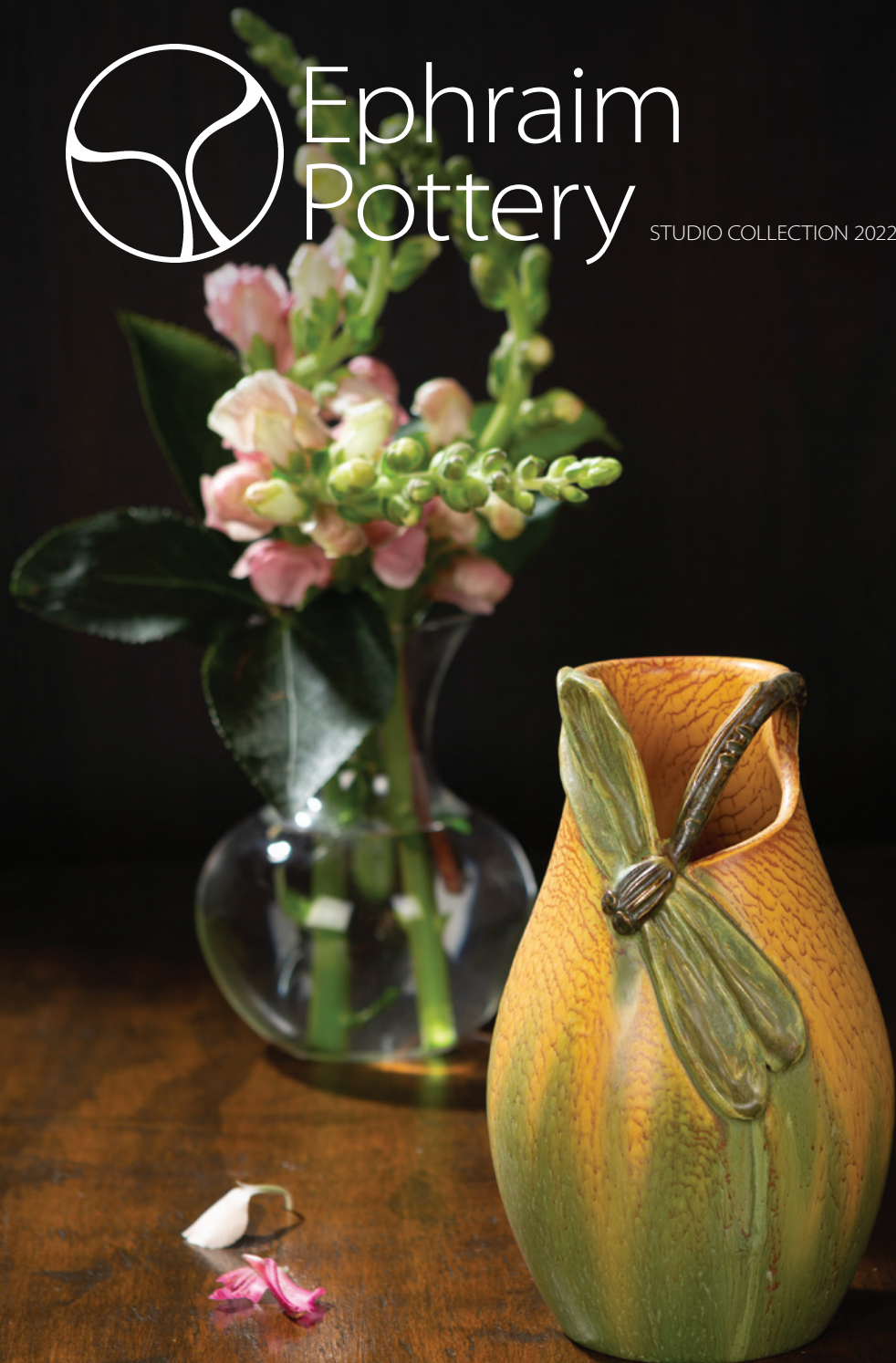




Ephraim Pottery

STUDIO COLLECTION 2022



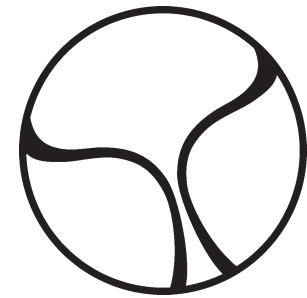
Diving Dragonfly Vase, see page 3 for details

Welcome to Ephraim Pottery and to our 2022 Studio Collection. The work in this catalog represents new designs that are foundational to everything Ephraim—they complement additional designs available on our website, as well as limited-edition offerings, such as seasonal collection pieces, featured POTS of the Week, and experimental work. All of our pottery celebrates the hand of the maker, leaning away from technology in favor of wheel-throwing, hand-sculpting, and glazing each individual piece.

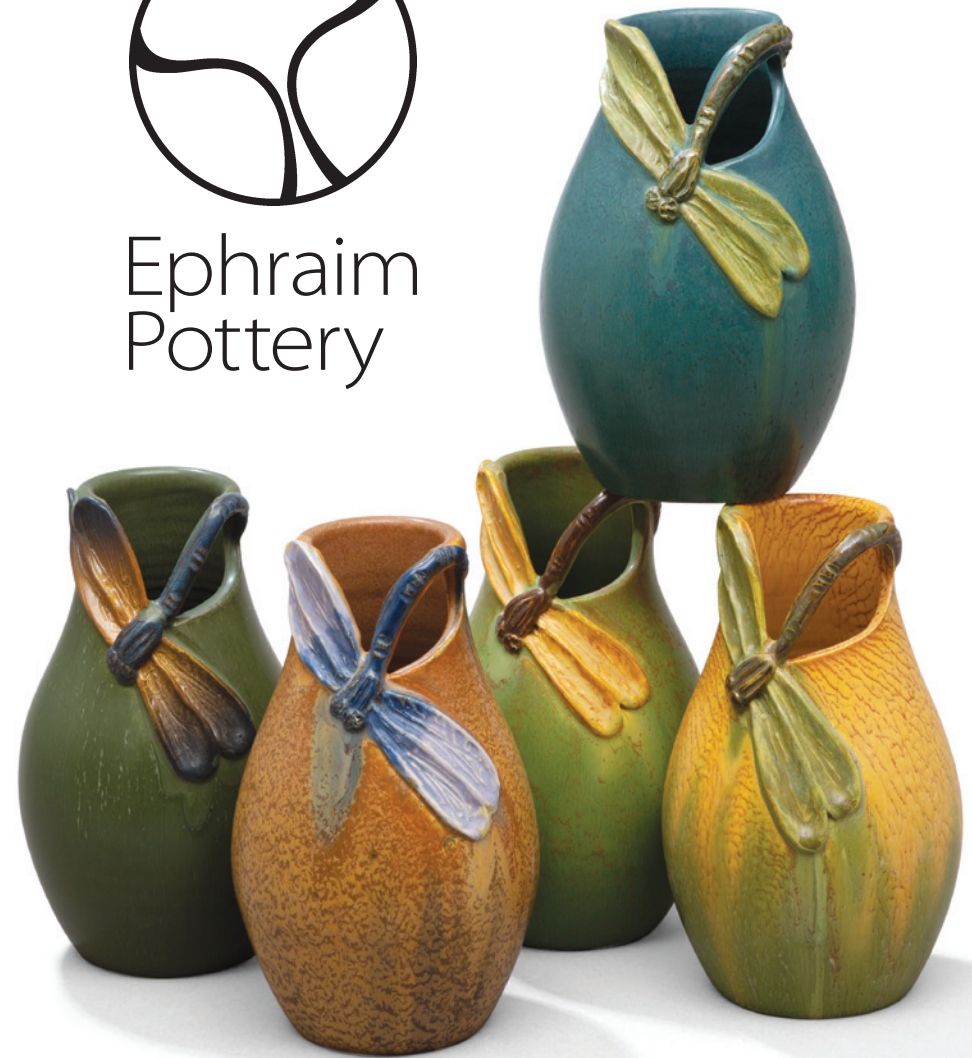
As we begin our 26th year of business, Ephraim Pottery's model of a collaborative clay studio inspired by the ideals of the American Arts & Crafts Movement is thriving—working as a group of full-time artists and finding strength in our dynamic, collaborative environment.

We recently expanded our creative capacity when we introduced the “POT(tery) of the Week” venture—a brand new design, released each Tuesday morning and available for one week only—in March of 2020. At the time, we had no idea how much introducing a new design each and every week would push us artistically. The POT of the Week requires a continual, relentless creativity that has tremendously benefitted our studio. In developing this muscle, we have gained creative fluidity, momentum, and an exhilarating pattern where one inspiration feeds off the last.

This 2022 Studio Collection is the culmination of our year of driven creativity, as many of the pieces displayed here evolved from our weekly design sessions. From playful creatures to refined, stylized compositions, we have never felt more creative and we hope the feeling is contagious. Enjoy this new collection—may it inspire you to explore your own creativity, make something new, and promote optimism and positivity. Thank you for your interest in our work!



Ephraim
Pottery



Diving Dragonfly Vase \$188

Q32 A dragonfly dives in dramatic fashion, showing off its wings and arching its tail. With a V-shaped cutout on the rim and a tear drop-shaped cutout beneath the tail to enhance its sense of movement, the Diving Dragonfly Vase is a small piece with a big visual impact.

Curdled Teal (top), Chestnut, Autumn Reflections, Algae, Autumn Wheat (l-r) • 6.5"H x 4"W



Inspired by the Arts & Crafts Movement

When Kevin Hicks founded Ephraim Pottery in 1996, cubicles, computers, and mass-produced goods were on the rise—and he yearned for the past when people made objects by hand. Inspired by the Arts & Crafts Movement of the early 20th century which upheld the ideals of hand craftsmanship and a reverie for nature, Hicks sought to build a modern artisan guild where collaboration thrived; where artists and craftspeople were elevated through sustainable wages, shared profits, and creative autonomy; and where handmade products showed the hand of the maker.

The historic Grueby Faience Pottery was an early inspiration for Ephraim Pottery and continues to influence our work profoundly. Founded in 1894 in Revere, Massachusetts, Grueby Faience Pottery created wheel-thrown vases with elegant, organic forms and characteristic low-relief leaf and bud sculpture. Grueby's matte glazes are famous for their opaque green color and interesting textures, often described as reminiscent of a watermelon or cucumber from a garden.

Kevin reflects today that, "There is just something about Grueby's art with the subtle sculpting and rich, organic glazes that look so different from other pottery. I like to think that the pottery studios of the past, like Grueby Faience and others, would appreciate that we are furthering some of their ideals. At the same time, we are a reflection of what our society values now. It is interesting that one hundred years apart, similar ideas resonate for different reasons."

In the context of a confusing modern world, we are grateful for the Arts & Crafts Movement, whose ideals anchor us by providing not only an ethos, but also great design blueprints worthy of emulation.

Virtue Vase \$298 • Organic Green • 11.75"H x 4.25"W

Fortitude Vase \$398 • Curdled Teal • 11.5"H x 6.75"W

Serenity Vase \$178 • Algae • 4.5"H x 5"W



Virtue Vase \$298

Q25 Five leaves and five buds crown the shoulder and flared rim of this iconic vase, whose rolled leaves impart a slightly feminine style to its architectural structure. The Virtue Vase encapsulates perfection—ideal for a mantel or bookshelf.

(above l-r) Algae, Cranberry (opposite), Organic Green, Autumn Reflections, Curdled Teal • 11.75"H x 4.25"W





Fortitude Vase \$398

Q24 The Fortitude Vase marries a well-proportioned, substantial form with a delicate rim and refined sculpture. This eight-sided piece offers balance and classic design to satisfy the most ardent Arts & Crafts aficionado.

(above l-r) Curdled Teal, Organic Green, Autumn Reflections *(opposite)*, Algae • 11.5"H x 6.75"W



Serenity Vase \$178

Q26 From its fine rim and narrow foot to its diaphanous, veined leaves expertly sculpted by hand, the dainty three-sided Serenity Vase deserves up close appreciation. Its form and sculpting showcase our diverse color palette so well that we offer this piece in an epic seven glazes—good luck choosing your favorite!

Ocean (above), Curdled Teal (right, top), Algae, Organic Green, Ocean (middle l-r), Cranberry, Wheat, Autumn Reflections (bottom l-r) • 4.5"H x 5"W



Ruby-Throated Hummingbird Vase \$348

Q33 Hummingbirds invariably evoke wonder and delight when spotted in our backyard gardens. Here this elusive, fleeting creature hovers on the side of this unique vase, whose soft white and green hues blur together in the background, allowing singular focus to rest on our majestic Ruby-throated hummingbird.

Off White • 9.5"H x 5.5"W





Hide and Seek Vase \$348

Q27 As you dutifully pull weeds in your garden, a charming scene unfolds before you. Two little frogs playfully peek at each other around a hosta leaf, set on the shoulder of this endearing, narrative vase. Ephraim artists deftly sculpt these expressive hoppers—each one individually—in a unique, high-relief style.

Teal • 12.5"H x 6.25"W

Over the Rainbow Tile \$58

Q45 Those familiar with our hometown of Lake Mills will recognize the picturesque footbridge across the inlet between Rock Lake and the Mill Pond. Over the Rainbow Tile's compact composition eloquently captures a favorite part of our idyllic town.

Indigo (above), Chestnut (left) • 4"H x 4"W

ES3 Tile Stand \$28

Shown holding a 4" x 4" tile • White Oak • 4.5"H x 2.75"W



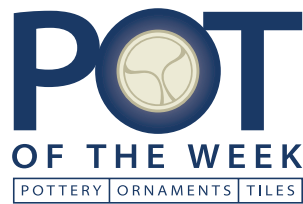
Birch Vase \$318

Q23 The Birch Vase invites our gaze to a window which perfectly frames a birch tree amidst a rolling landscape. The architectural detail on the form evokes the rounded timbers of the historic Greene & Greene architecture, enhancing the illusion that we are inside looking out. Full of contrast and offered in four striking colors, this vase makes a bold statement in any decor.

Cranberry, Chestnut, Goldenrod (*above l-r*), Indigo (*opposite*) • 9.75"H x 3.75"W

Stay Connected

Interested in seeing exclusive new Ephraim Pottery designs EACH week? Sign up for our Tuesday email newsletter. Here you can see the POT of the Week—a new release available for one week only—as well as insights into our artists and processes.



Visit www.ephraimpottery.com and scroll down to "Ephraim Email Signup" to subscribe. You will also receive a coupon code for 10% off your next order when you sign up!





Bungalow Bats Bowl \$298

Q29 Those of us who live in old homes are familiar with the occasional bat flying in and out of our eaves. The Bungalow Bats Bowl combines elements from traditional Arts & Crafts architecture and metalwork with our studio's signature high-relief sculpture. Here two bats spread their wings on the "hammered" rim of a low-bellied bowl. The bottom half of the bowl is finished in our deep Teal glaze while the top features toasty amber and olive tones.

Teal • 5.5"H x 7.75"W

Sojourn Tile \$110

Q41 Sojourn Tile is a narrative composition recalling the tale of a moose who stops just outside a village for a rest and a sip of water from its stream. Subtle glaze-layering in the stream, in the sky and on the moose make this a lively, rich tile.

Aqua • 7"H x 5"W

ES5 Tile Stand \$51

Shown holding a 7" x 5" tile • White Oak • 8"H x 5"W



Crescendo Rose Vase \$318

Q22 A stylized, hand-carved rose is the centerpiece of this stunning Art Nouveau vase. Clean lines follow the contours of the form, rising to boldly frame the rose motif. The Crescendo Rose Vase is finished in a soft chestnut green glaze.

Chestnut • 10.5"H x 4.5"W



Red-Winged Beauty Tile \$58

Q44 Red-winged blackbirds are among the first birds to return to our northern climate in the spring, frequenting the marshes and roadsides, and staking out their territories with loud, trilling calls. A red-winged blackbird takes flight on this charming, stylized tile.

Olive (above), Aqua (right) • 4"H x 4"W

ES3 Tile Stand \$28

Shown holding a 4" x 4" tile • White Oak • 4.5"H x 2.75"W

Ephraim Woodwork

Our frames, stands, and shelves are handmade with traditional Craftsman-style mortise-and-tenon and tongue-and-groove joinery. John Raymond, Ephraim artist, uses an ammonia fuming process to darken the quarter-sawn white oak.



Dogwood Tile \$88

Q43 The dogwood's showy bracts are the very symbol of spring, making it a meaningful and nostalgic motif to those hoping for winter's end. The Dogwood Tile utilizes strong black outlines and a cool, pastel palette to delineate the beauty of a single dogwood branch and blooms.

Aqua • 5"H x 7"W

ES5 Tile Stand \$51 • Shown holding a 5" x 7" tile • White Oak • 8"H x 5"W



Hummingbird Vine Tile \$88

Q42 Did you know that "trumpet vine" is also known as "hummingbird vine" because hummingbirds love it so? Here we commemorate both hummingbird and its namesake vine in a flowing, bold composition featuring bright complementary colors.

Aqua • 8"H x 4"W

ES7 Tile Stand \$56 • Shown holding an 8" x 4" tile • White Oak • 10"H x 5"W



Bleeding Heart Tile \$38

Q46 Is there any flower more recognizable than the bleeding heart with their gently arching stems and characteristic flower? This beautiful tile captures its essence—complete with sweetness and nostalgia.

Seaspray Blue • 3"H x 3"W

Ephraim Art Tile

Our traditional earthenware tiles and plaques are pressed, trimmed and glazed by hand. Handcrafted art tiles have a spontaneity and looseness not found in commercially manufactured tile. This makes each tile slightly different and uniquely beautiful.

ES3 Tile Stand \$28 • Shown holding a 3" x 3" tile • White Oak • 4.5"H x 2.75"W



Lidded Fuchsia Jar \$398

U08 The Lidded Fuchsia Jar follows up the limited-edition Fuchsia Vase from 2016 and the current Flowering Fuchsia Bottle. Bowing blossoms rest amidst sculpted leaves at the top of this sturdy form, finished beautifully in a vibrant contrast of rich pink and red tones on a deep chestnut green field.

Chestnut • 11.5"H x 6"W

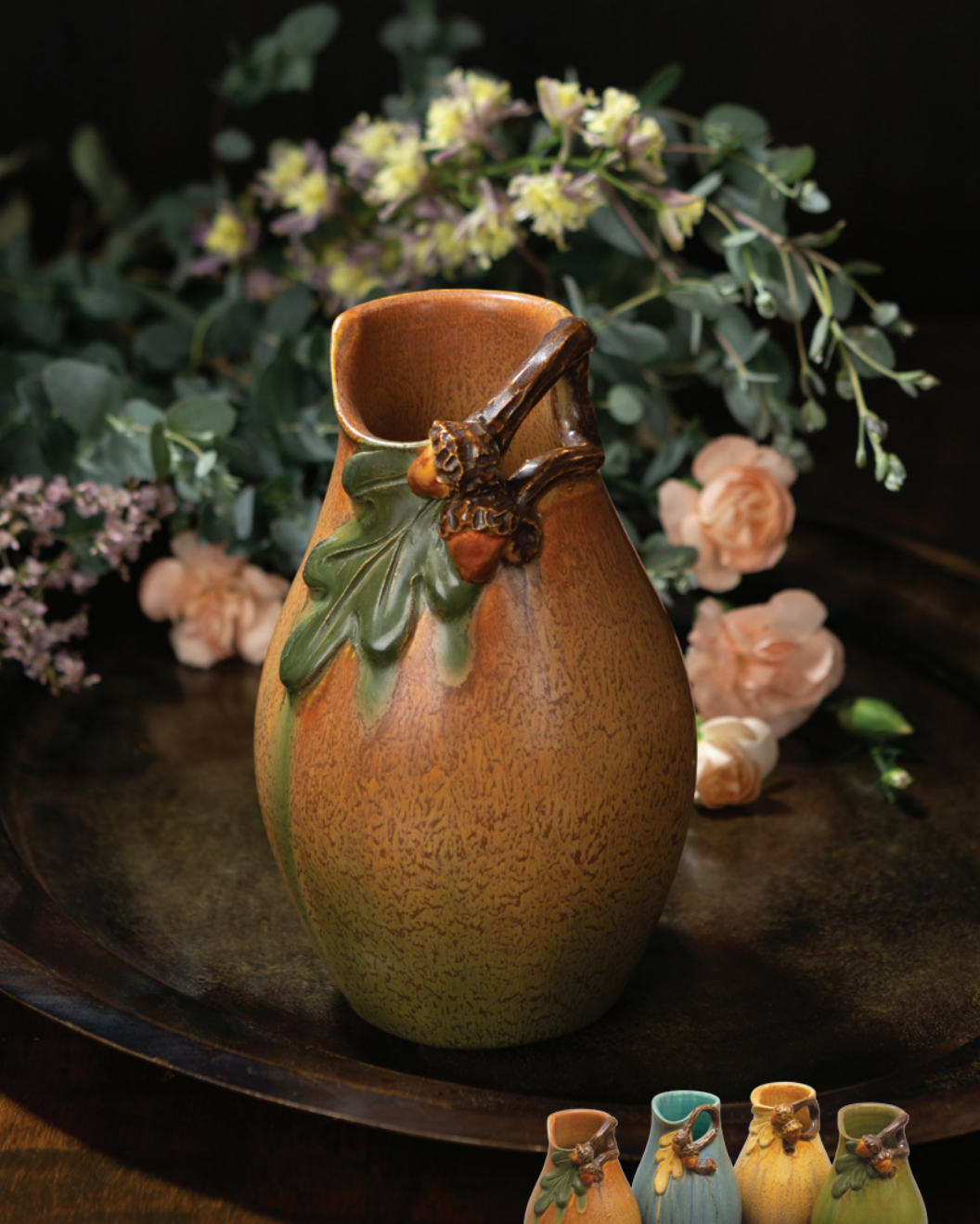


Pacific Poppies Bottle \$238

Q28 Since opening the Ephraim Pottery West Coast Gallery in 2012, we have become more familiar with the variety of California's natural beauty, and local customers encouraged us to create a piece featuring their state flower, the California Poppy. Here, golden-edged orange poppies flutter in high relief on the side of a slim bottle glazed in aquamarine tones which evoke the Pacific Ocean.

Aqua • 11"H x 3.75"W





Acorn and Oak Vase \$168

Q31 A simple bowing oak branch bends at the rim of this sweet vase. The flowing lines of the hand-sculpted oak branch, oak leaf, and acorns drape across the form with graceful movement, while the teardrop-shaped cutout adds an element of whimsical discovery.

Autumn Reflections (above), October Sky, Wheat, Dusky Olive (l-r) • 6.5"H x 4"W



Fluted Chicory Bottle \$218

Q30 Thin wisps of summer's ubiquitous chicory blooms rest on three sides of this elegant fluted form. A soft ombré of pastel blue to indigo references the high sky and crystal atmosphere of the best days of summer.

Sky Blue • 7.75"H x 4.5"W



Poetic Pine Bowl \$188

Q34 A hand-pulled pine branch, sprigs of needles, and pinecones rest gracefully on the face of the Poetic Pine Bowl. Offered in three stunning, special effect glazes, this piece is sure to be a favorite among Ephraim enthusiasts.

Snow (above), Glacial (top right), Autumn Wheat (bottom right) • 3.75"H x 6.25"W



Heron Tile \$110

Q40 We think of our low-relief tile designs as sketches, moments in time rendered gesturally like this heron posing briefly in a stream before moving along the waterway in search of more fish. The scene is glazed in an earthy, warm palette.

Olive • 7"H x 5"W

ES5 Tile Stand \$51 • Shown holding a 7" x 5" tile • White Oak • 8"H x 5"W



Lasting Designs

While the pieces displayed in this catalog showcase our 2022 Studio Collection, we continue to produce enduring favorites from previous collections like the Athena Vase, Lidded Ginkgo Jar, Queen Bee Vase, and other timeless designs featured here.

H19 Athena Vase \$208 (2014) • Curdled Teal • 7.75"H x 3.5"W

U02 Lidded Ginkgo Jar (2014) \$398 • Algae • 12.5"H x 6.375"W

P23 Queen Bee Vase \$288 (2021) • Autumn Wheat • 10.25"H x 4.5"W

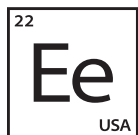


These popular offerings from years past complement our 2022 Studio Collection and are available until no more than 500 pieces are crafted, at which point the design is retired. Visit www.ephraimpottery.com to see our full collection of art pottery, tiles, and tableware.

N29 Wildflower Cabinet Vase (2020) \$188 • Leaf Green • 7.5"H x 3.5"W

Q36 Trailing Wisteria Vase (2022) \$298 • Off White • 10"H x 5"W

N43 California Blooming Tile (2020) \$98 • Indigo • 8"H x 4"W



Ephraim ELEMENTAL

Ephraim Elemental is the functional line of wheel-thrown tableware from Ephraim Pottery. Intended to be beautiful in both form and function, these pieces are handmade from stoneware clay fired to a higher temperature and finished with our food-safe, watertight glazes.

The modern form of this line creates the perfect canvas for rich, colorful glazes with a matte, stony texture. Inspired by the fire, clay, and mineral oxides inherent in the ceramic process, we present pieces elemental to the rituals of daily life—from microwave to dining table to dishwasher.

Scape Cup \$38

QF550 "Scape"—short for landscape or nightscape—encompasses both glaze variations of this minimalist wheel-thrown cup. Ponder the day's possibilities with these perfect vessels for coffee, tea, or juice!

Day, Night (above, l-r) • 4.25"H x 3.25"W

Scape Bottle \$128

QF700 Designed to complement our Scape Cup and the other pieces in our Ephraim Elemental Tableware Collection, this sleek wheel-thrown bottle features four distinct tonal landscapes rendered in a minimalist style. Each vase is handmade and one of a kind, so expect wonderful variations in the vista's contours.

Day, Night, Cobalt, Malachite (opposite top, l-r) • 8.75"H x 4"W



More Elemental Essentials

View our complete collection of mugs and bowls online at www.ephraimpottery.com

Our Essential Mug marries minimalist design with vibrant, cheerful colors. This piece is sure to bring a smile to your face and be a new favorite in your kitchen cupboard.

NF521 Jumbo Essential Mug \$42 • 5"H x 3.5"W

MF501 Essential Mug \$38 • 4"H x 3.125"W

MF601 Tiny Essential Mug \$28

3.125"H x 2.5"W • Shown in Yellow Oxide (other colors online)



Unique Qualities of Handmade Ceramics

No two pieces of the same design look exactly alike, that's part of the magic of handmade ceramics. Because we lean away from technologies like molds, templates, and casts, each piece is wholly unique. Minor variations in size, decoration, color and finish are intrinsic to our pottery. Please expect and embrace the variation inherent in our process. We guarantee that all items shipped are first-quality, and will accept your return or exchange within 30 days.

Dust your Ephraim art pottery with a dry, soft cloth. We recommend a liner for use with water and no exposure to extreme elements, as traditional earthenware art pottery is porous.

Handmade takes time. From our hands to your hands, our pieces generally require four to six weeks to complete. We ship to all addresses within the continental United States and try our best to ensure successful delivery to other locations around the world, whenever possible.

Shop Stamps

Ephraim stamps the foot of each pot and the back of each tile to assure authenticity. We introduce new studio marks each year, allowing collectors to determine the year that the studio created their piece. In addition to the impressed studio mark, we stamp the foot with initials of the potter, sculptor, and glazer who created each individual piece along with any special edition or Experimental marks that apply.

The example below shows all of the Ephraim shop stamps on the foot of a vase created in 2022.



The large Ephraim Pottery studio mark includes the Roman numeral XXII to represent the year. Every piece of pottery created in 2022 bears this mark.



The potter's mark shows initials inside of a circle stamped into the clay, indicating who threw the form. (KH = Kevin Hicks)



The sculptor's mark shows italicized initials impressed into the clay, indicating who sculpted the piece. (LP = Leah Purisch)



The script initials stamped in glaze note the artist who glazed the piece. (BH= Becky Hansen)



This vase also bears a stylized E in an oval. This is the Experimental Pottery stamp which indicates that this is a prototype or one-of-a-kind piece.



Thank you for choosing Ephraim Pottery

When you choose Ephraim Pottery, you choose to support working artists who continue the tradition of handmade American art pottery and woodwork. Each piece is lovingly crafted with a passion for capturing the fleeting, awe-inspiring beauty of our natural surroundings. Thank you for joining us in exploration as we sculpt our spot in the American artistic heritage.

SHOP THE 2022 COLLECTION AND MORE AT OUR TWO RETAIL LOCATIONS

WEST COAST GALLERY

728 Main Street Cambria, CA 93428
805.924.1275

STUDIO & GALLERY

203 West Lake Street Lake Mills, WI 53551
920.648.5269



Ephraim
Pottery

203 W LAKE ST
LAKE MILLS, WI 53551

BULK RATE
U.S. POSTAGE
PAID

PERMIT NO. XXXX



Acorn and Oak Vase, see page 26 for details

SHOP THE 2022 COLLECTION AND MORE ONLINE

EPHRAIMPOTTERY.COM | 888.704.7687

EPHRAIM POTTERY STUDIO

203 West Lake Street Lake Mills, WI 53551
888.704.7687



All rights reserved © 2022 Ephraim Faience Pottery Inc.

A special thank you to Nicole Cooke Photography and Tony Cooke Design for creating this publication.