



Ephraim Pottery

STUDIO COLLECTION 2023



Peacock Feather Vase, see page 3 for details



Ephraim
Pottery

Welcome to Ephraim Pottery and to our 27th annual Studio Collection. Each spring we curate a grouping of new designs to showcase our latest ideas, glazes, and techniques.

These pieces are foundational; they inform and complement the enduring favorites on our website, as well as limited-edition designs offered throughout the year ahead.



Peacock Feather Vase \$348

R24 A peacock feather is the star of this highly refined, exacting vase that draws inspiration from Arts & Crafts and Art Nouveau line work. It may look effortless, but refining this design took dozens of iterations and nearly a year of trial and error. We couldn't be more pleased with the results. From the meticulously incised design, to the hand-painted details, this piece truly requires a steady hand and expert glaze application skills. Offered in two stunning glaze options—Leaf Green and Cranberry.

(above l-r) Cranberry, Leaf Green • 9"H x 4"W



Building on the Past

In 1996 when Kevin Hicks founded Ephraim Pottery, cubicles, computers, and mass-produced goods were on the rise and he yearned for the past when people made objects by hand. Inspired by the Arts & Crafts Movement of the early 20th century, which upheld the ideals of hand craftsmanship and a reverie for nature, Hicks sought to build a modern artisan guild where collaboration could thrive, artists were elevated through sustainable wages/shared profits and creative autonomy, and handmade products showed the hand of the maker.

Charting Our Future—Ephraim Style

Twenty-seven years later our collaborative studio model—now with ten artists—is thriving and a succinctly Ephraim style has emerged. Three years ago, we organized and digitized an archive of our extant work—Historical Archive Database—which is available for the public to view on our website. This tool has been a helpful font of inspiration for our artists, too. While we continue to draw on design elements from the Arts & Crafts Movement, we have established a style that is unique to our studio, defined by nearly three decades of driven, collaborative creativity.

From bees and dragonflies, to waterfalls and ginkgo leaves, the 2023 Studio Collection draws on our favorite motifs. Here, you will see many of our classic glaze combinations and structural elements, such as patina glazes, cutouts, and manipulated forms. You will also see unexpected innovations and new colors that are sure to become ongoing components of our stylistic vernacular. We greatly appreciate your interest in our work and your support!

Dragonfly Duet Vase \$348 • Curdled Teal • 11"H x 6.625"W

Peacock Feather Vase \$348 • Cranberry • 9"H x 4"W

Timeless Ginkgo Vase \$298 • Desert Sun • 12.5"H x 5.25"W

Bixby Tile \$38 • Chestnut • 3"H x 3"W

Cascade Cabinet Vase \$218 • Chestnut • 7"H x 3.25"W

ES3 Tile Stand \$34

Shown holding a 3" x 3" tile • White Oak • 4.5"H x 2.75"W



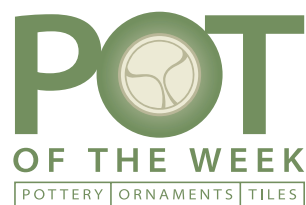
Enchanted Iris Vase \$198

R22 The iris is a beloved early bloomer in the perennial garden. In Greek mythology, Iris is a golden-winged messenger of the gods. As a link between heaven and earth, her symbol is the rainbow. As a flower, the iris is aptly named, boasting large, showy blooms that come in virtually every color of the rainbow. Here, a delicately sculpted iris sways in the gentle spring breeze. The Enchanted Iris Vase is offered in three vibrant glaze options.

(above l-r) Leaf Green *(opposite)*, Shibori, Autumn Wheat • 7"H x 3.75"W

Stay Connected

Interested in seeing exclusive new Ephraim Pottery designs EACH week? Sign up for our Tuesday email newsletter. Here you can see the POT of the Week—a new release available for one week only—as well as insights into our artists and processes.



Visit www.ephraimpottery.com and scroll down to "Ephraim Email Signup" to subscribe. You will receive a coupon code for 10% off your next order when you sign up!





Dragonfly Duet Vase \$348

R31 The Dragonfly Duet Vase was inspired by a retired Ephraim vase from 2009 —The Legacy Vase. A dragonfly motif applied to the Legacy Vase, with its sturdy handles and bold leaf sculpture, makes for something altogether new. The Dragonfly Duet Vase has a metalwork quality that is enhanced by an innovative glaze technique.

(above l-r) Autumn Reflections (opposite), Organic Green, Curdled Teal • 11"H x 6.625"W





Highland Thistle Tile \$58

R41 Did you know that the oldest 'national flower' is Scotland's thistle and it dates back to the 1200's? This tile celebrates the thistle's jagged edges and range of green and violet hues in a compact, pleasing composition.

Crystalline Purple (*above*), Teal (*left*) • 4"H x 4"W

ES3 Tile Stand \$34

Shown holding a 4" x 4" tile • White Oak • 4.5"H x 2.75"W

Honey Bound Vase \$148

R28 Sometimes the world's smallest creatures deserve the most careful notice. Notice the bee's delicate wings; notice the bee's patterned body; notice the bee's important pollinating role in the ecosystem. Here a plump honey bee perches near the rim of a small, rippled form. A honey-like glossy amber glaze spills over a soft yellow matte glaze, inviting you to admire the little bee as it tends its honey.

Glossy Amber • 4"H x 3.75"W





Unity Vase \$258

R27 The Unity Vase contrasts a shapely form and curvilinear sculpture with rigid lines and pleasing symmetry. Offered in three of our textured organic colors, the Unity Vase complements the other Grueby-inspired, leaf-and-bud designs in our repertoire.

(above l-r) Organic Green, Pacific Batik, Autumn Reflections (opposite) • 8.25"H x 5.25"W

Orange Blossom Vase \$288

R25 The Orange Blossom Vase is a new motif for the studio. High relief sculpture and a tall form offered a perfect substrate to show off our rich Indigo glaze, punctuated with complementary Orange and White glazes. This pretty piece with an unusual motif and glaze combination is a stand-out!

Indigo • 11"H x 5"W



Timeless Ginkgo Tile \$38

R44 The Timeless Ginkgo Tile presents a ginkgo leaf with simplicity and beauty. The gentle arch of the low-relief sculpture is the perfect 'canvas' for our two patinated glaze combinations—Algae and Indigo.

Indigo (above), Algae (left) • 3"H x 3"W

ES3 Tile Stand \$34

Shown holding a 3" x 3" tile • White Oak • 4.5"H x 2.75"W



Timeless Ginkgo Vase \$298

R34 After all the other trees have dropped their leaves, the golden ginkgo leaves still flutter on the autumn trees. The revered ginkgo is a perennial inspiration to us in the studio. We delight in representing the unique leaves and vibrant warm hues.

(above l-r) Autumn Reflections, Desert Sun (opposite), Seaspray Blue • 12.5"H x 5.25"W





Wildflower Trio Bowl \$248

R32 Three flowers sculpted in high relief rest on the rim of this manipulated, carved, round form. This piece has it all—delicate sculpture, movement, and a light and bright color palette. The Wildflower Trio Bowl is a cheerful addition for your collection.

Curdled Aqua • 6.75"H x 5.75"W



May Bells Tile \$98

R43 It is easy to see why, in the language of flowers, the lily of the valley—one of the first flowers to bloom in the spring— signifies the return of happiness. Our May Bells Tile features the beautifully delicate white flower with flowing stylized lines and Teal, Aqua, and Chestnut glazes.

Teal • 8"H x 4"W

ES7 Tile Stand \$56 • Shown holding an 8" x 4" tile • White Oak • 10"H x 5"W



Ephraim Woodwork

Our frames, stands, and shelves are handmade with traditional Craftsman-style mortise-and-tenon and tongue-and-groove joinery. John Raymond, Ephraim artist, uses an ammonia fuming process to darken the quarter-sawn white oak.

Monarch Tile \$78

R42 From October through February monarch butterflies overwinter in the eucalyptus trees of Central California. This tile depicts the majestic monarch, spreading its wings. To pair well with our existing California themed tiles—the Quail Tile and California Blooming Tile—this monarch is sculpted in a familiar 'stained glass' style.

Teal (opposite) • 5"H x 5"W

ES5X5 Tile Frame \$135 • Shown holding a 5" x 5" tile • White Oak • 10.5"H x 10.5"W

ESL02_13 Frame Stand \$110 • Shown with a 5" x 5" framed tile • White Oak • 13"H x 6.75"W



Bixby Tile \$38

R46 The Bixby Bridge is a landmark just outside Big Sur that spans the steep mountains overlooking the Pacific Ocean. From the big California sky and the sparkling sea, to the crescent moon and iconic bridge, this petite tile offers a vast scene in a compact composition.

Chestnut • 3"H x 3"W

ES3 Tile Stand \$34 • Shown holding a 3" x 3" tile • White Oak • 4.5"H x 2.75"W



Cascade Cabinet Vase \$218

R29 You set out on a foggy morning with a mission to see something new. As you hike up the mountain, the secluded cascade rewards you with a beautiful scene. Two towering pines guard the well-kept secret waterfall and ancient stony bridge. Each vase is sculpted individually by hand to create a bas-relief "sketch" that possesses amazing detail. The Cascade Cabinet Vase is finished in a tonal green and grey palette.

Chestnut • 7"H x 3.25"W



Amulet Tile \$38

R45 Inspired by the recent digital 'unwrapping' of an Egyptian mummy, who was buried with forty-nine amulets, we created this three-inch square Amulet Tile. The tile is finished in a yellow glaze with black accents and a black crackle, evoking the version of an ancient, precious artifact in our imagination.

Crackled Black • 3"H x 3"W

ES3 Tile Stand \$34

Shown holding a 3" x 3" tile

White Oak • 4.5"H x 2.75"W



R23 Night Crusader Vase \$198 • Cracked Aqua • 5.75"H x 4"W

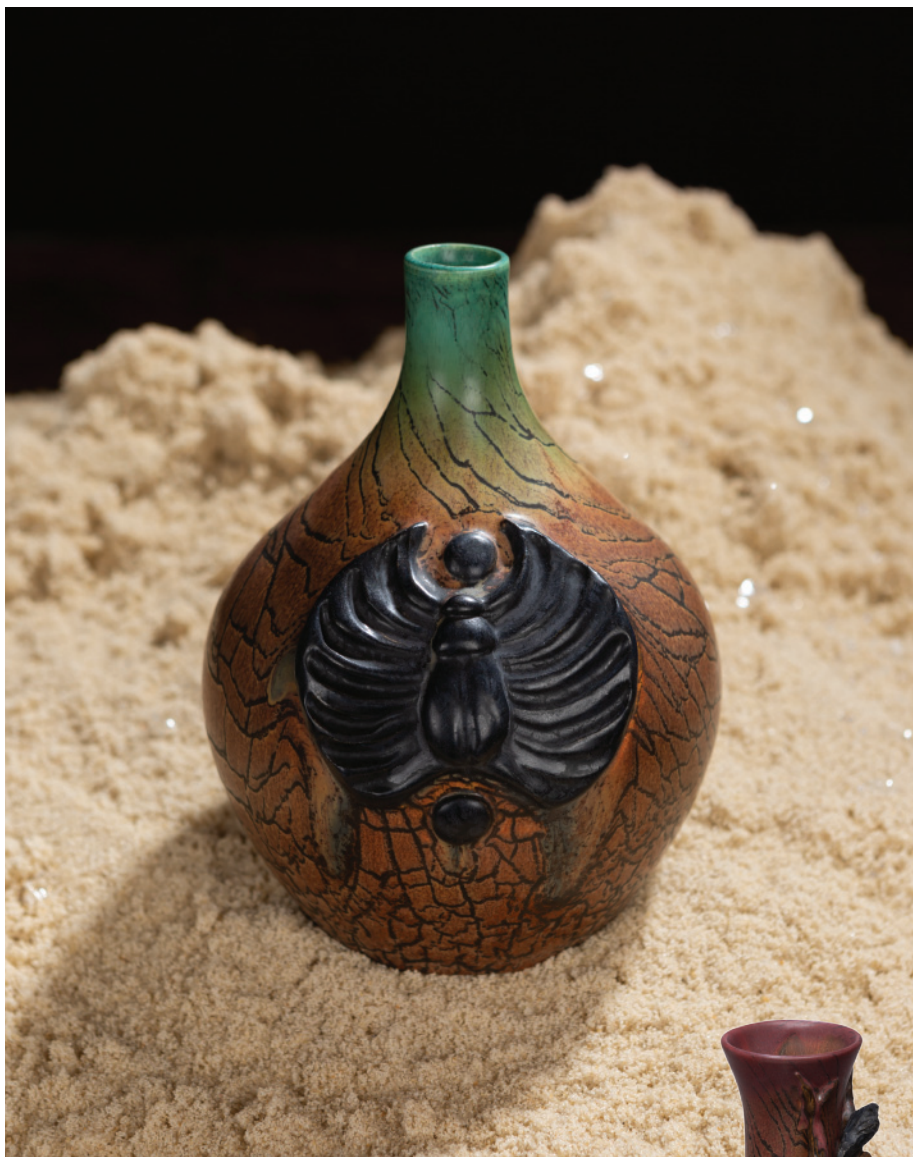
R23 Just as the sun sets and night falls, a little bat swoops upward to form the edge of this sloping vase. The cutout and manipulated rim as well as the low relief, organic sculpture of the bat impart a great amount of movement and vitality into this cabinet vase. Yellow, Aqua, and Indigo blend together beneath a golden crackle to evoke an early night sky. This is a must-have design for the bat lovers among us.

R30 We designed the Oak Branch Bowl to form a triptych with our popular Ginkgo Branch Bowl and Pine Branch Bowl. These three designs feature arboreal motifs that wrap around the rim, forming branch handles to create a sculptural piece. The twining design combined with our flowing, blended glazes, means each of these pieces is truly an original work of art.



R30 Oak Branch Bowl \$268

(l-r) Autumn Reflections (above), Sage, Wheat • 4.5"H x 6.5"W



Eternal Scarab Bottle \$198

R33 Scarab beetles, iconically and prolifically represented by the ancient Egyptians, have been a part of our artistic milieu ever since. We chose to sculpt a scarab in homage to the 100 year anniversary of the discovery of King Tutankhamen's tomb. A small bottle with a narrow, straight neck provides the background for our symmetrical, hand-sculpted scarab medallion. The scarab, with a black satin finish, is set against our Mahogany crackle glaze.

Mahogany • 6"H x 4.5"W



Mischief Vase \$318

R26 In folklore, ravens often play the tricksters and here we have portrayed two mischievous and conspiring ravens on a thick tree branch that winds around the vase. The branch stretches from the bottom to the top of the vase and is separated in the mid-section to enhance the illusion of depth. Our Mahogany glaze accented with a Crystalline Purple base and a Cranberry rim is the perfect moody background to set the scene.

Mahogany • 9.75"H x 5.5"W





Cardinal Urn \$498

U09 A clear, bright melody rings out in the crisp air. From my windowpane, I spy a pair of cardinals—one brilliant red and the other muted, still beautiful—as they dart between the tree branches, a welcome sight! This lidded jar celebrates our favorite visitors, the masked and crested Northern Cardinals. Facing one another, these male and female cardinals perch on branches with crimson berries. The rich Seaspray Blue and Leaf Green glazes evoke the atmosphere on a clear day and accentuate the vases' intense red focal points.

Male (*above*), Female (*opposite*) • 13.75"H x 6"W





Lasting Designs

While the pieces displayed in this catalog showcase our 2023 Studio Collection, we continue to produce enduring favorites from previous collections like the Acorn and Oak Vase, Virtue Vase, Gnarled Pine Vase, and other timeless designs featured here.

Q31 Acorn and Oak Vase (2022) \$168 • Wheat • 6.5"H x 4"W

Q25 Virtue Vase (2022) \$298 • Algae • 11.75"H x 4.25"W

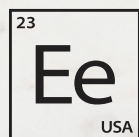
N27 Gnarled Pine Vase (2020) \$258 • Seaspray Blue Batik • 5.25"H x 6"W

These popular offerings from years past complement our 2023 Studio Collection and are available until no more than 500 pieces are crafted, at which point the design is retired. Visit www.ephraimpottery.com to see our full current collection of art pottery, tiles, and tableware.

G30 Pine Branch Vase (2013) \$268 • Clear Morning • 4.5"H x 6.375"W

G07 Blooming Prairie Vase (2013) \$344 • Shibori • 13.75"H x 5"W

M40 Craftsman Dragonfly Tile (2019) \$58 • Aqua • 4"H x 4"W



**Ephraim
ELEMENTAL**

Ephraim Elemental is the functional line of wheel-thrown tableware from Ephraim Pottery. Intended to be beautiful in both form and function, these pieces are handmade from stoneware clay, fired to a higher temperature and finished with our food-safe, watertight glazes.

The modern form of this line creates the perfect canvas for rich, colorful glazes with a matte, stony texture. Inspired by the fire, clay, and mineral oxides inherent in the ceramic process, we present pieces elemental to the rituals of daily life—from microwave to dining table to dishwasher.

NF530 Faceted Bud Mug \$48 • *(above, l-r)* Teco Green, Malachite • 3.75"H x 4.25"W • 14 fl oz

RF401 Essential Cup \$28

(opposite near, l-r) Violet Flame, Comet Orange, Yellow Oxide
4.25"H x 3.25"W • 10 fl oz

RF400 Evergreen Cup \$32

(opposite far, l-r) Teco Green, Storm, Malachite
4.25"H x 3.25"W • 10 fl oz

View our complete collection of mugs and bowls online at www.ephraimpottery.com



Unique Qualities of Handmade Ceramics

No two pieces of the same design look exactly alike, that's part of the magic of handmade ceramics. Because we lean away from technologies like molds, templates, and casts, each piece is wholly unique. Minor variations in size, decoration, color and finish are intrinsic to our pottery. Please expect and embrace the variation inherent in our process. We guarantee that all items shipped are first-quality, and will accept your return or exchange within 30 days.

Dust your Ephraim art pottery with a dry, soft cloth. We recommend a liner for use with water and no exposure to extreme elements, as traditional earthenware art pottery is porous.

Handmade takes time. From our hands to your hands, our pieces generally require four to six weeks to complete. We ship to all addresses within the continental United States and try our best to ensure successful delivery to other locations around the world, whenever possible.

Shop Stamps

Ephraim stamps the foot of each pot and the back of each tile to assure authenticity. We introduce new studio marks each year, allowing collectors to determine the year that the studio created their piece. In addition to the impressed studio mark, we stamp the foot with initials of the potter, sculptor, and glazer who created each individual piece along with any special edition or Experimental marks that apply.

The example below shows all of the Ephraim shop stamps on the foot of a vase created in 2023.



The large Ephraim Pottery studio mark includes the Roman numeral XXIII to represent the year. Every piece of pottery created in 2023 bears this mark.



The potter's mark shows initials inside of a circle stamped into the clay, indicating who threw the form.
(AS = Alek Schroeder)



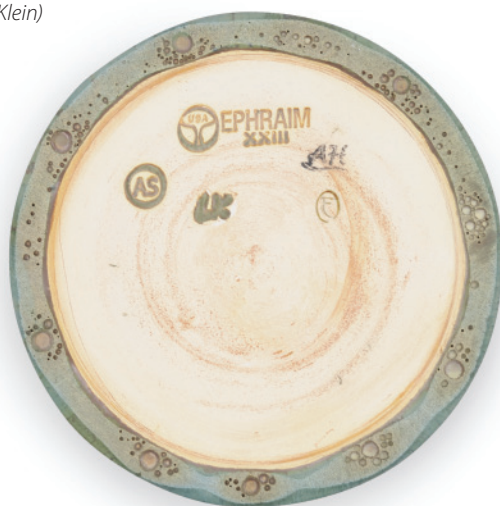
The script initials stamped in glaze note the artist who glazed the piece.
(AH = Alex Hanstein)



This vase also bears a stylized E in an oval. This is the Experimental Pottery stamp which indicates that this is a prototype or one-of-a-kind piece.



The sculptor's mark shows italicized initials impressed into the clay, indicating who sculpted the piece.
(LK = Laura Klein)



Thank you for choosing Ephraim Pottery

When you choose Ephraim Pottery, you choose to support working artists who continue the tradition of handmade American art pottery and woodwork. Each piece is lovingly crafted with a passion for capturing the fleeting, awe-inspiring beauty of our natural surroundings. Thank you for joining us in exploration as we sculpt our spot in the American artistic heritage.

SHOP THE 2023 COLLECTION AND MORE AT OUR TWO RETAIL LOCATIONS

WEST COAST GALLERY

728 Main Street Cambria, CA 93428
805.924.1275

STUDIO & GALLERY

203 West Lake Street Lake Mills, WI 53551
920.648.5269



**Ephraim
Pottery**
203 W LAKE ST
LAKE MILLS, WI 53551

BULK RATE
U.S. POSTAGE
PAID

PERMIT NO. XXXX



Oak Branch Bowl, see page 25 for details

SHOP THE 2023 COLLECTION AND MORE ONLINE

EPHRAIMPOTTERY.COM | 888.704.7687

EPHRAIM POTTERY STUDIO

203 West Lake Street Lake Mills, WI 53551
888.704.7687



All rights reserved © 2023 Ephraim Faience Pottery Inc.

A special thank you to Nicole Cooke Photography and Tony Cooke Design for creating this publication.